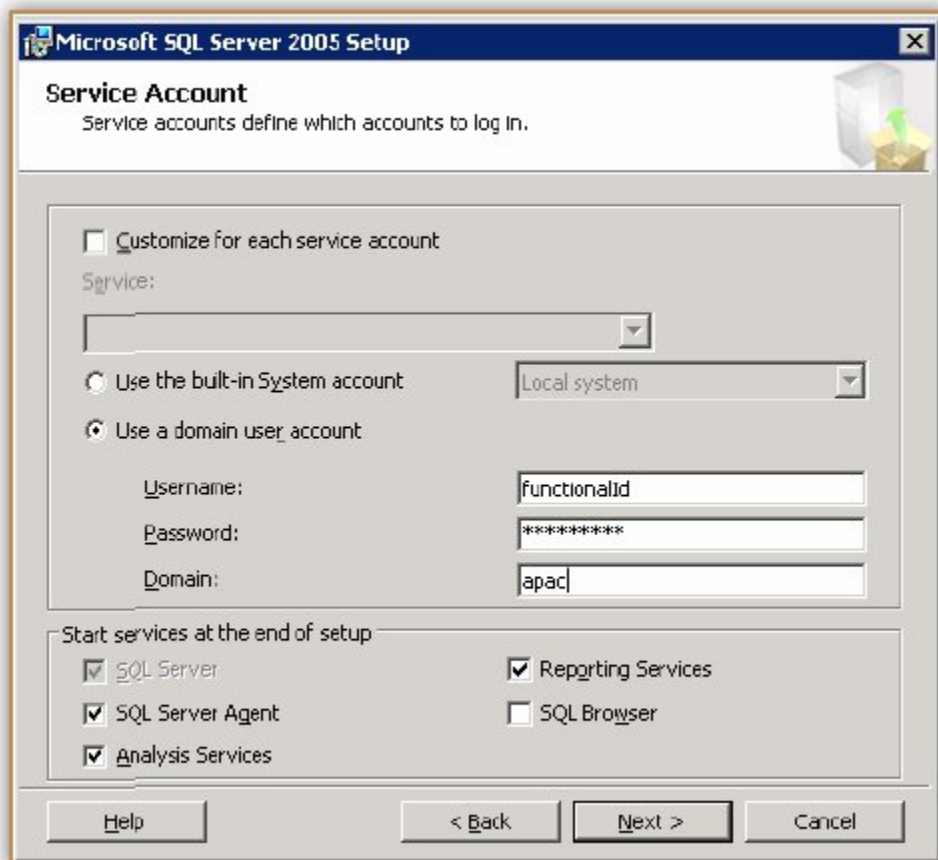


SQL2005 Server Installation and Configuration for SpeechMiner

Installation

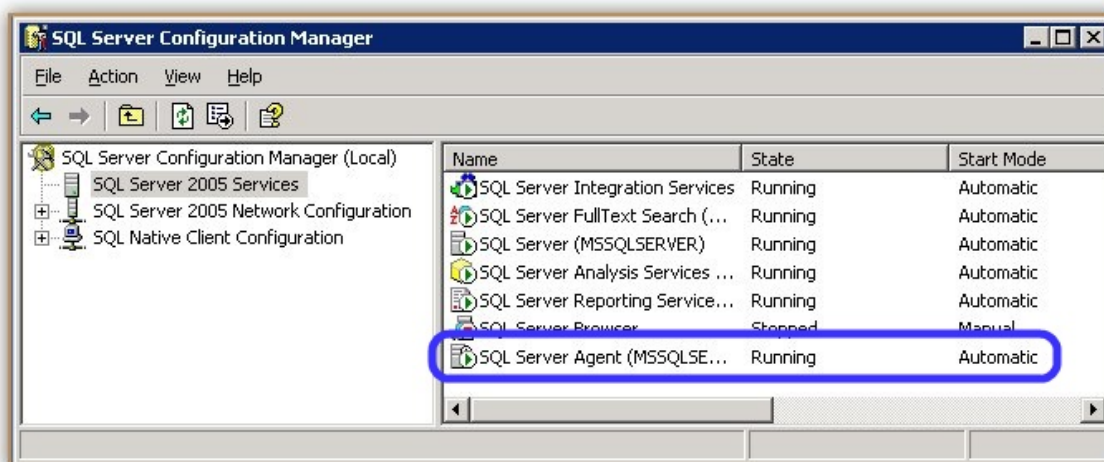
1. **Service Account:** make sure to select
 - SQL Server Agent
 - Analysis Services
 - Reporting Services



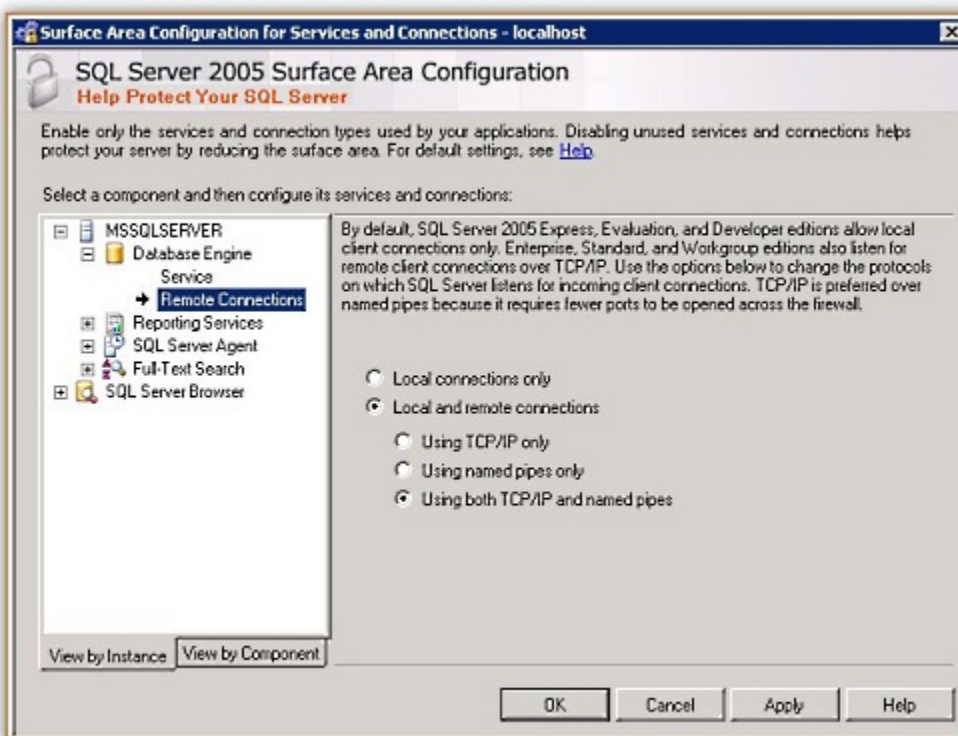
2. Keep all the defaults in the rest of the wizard's screens

Configuration: SQL Server

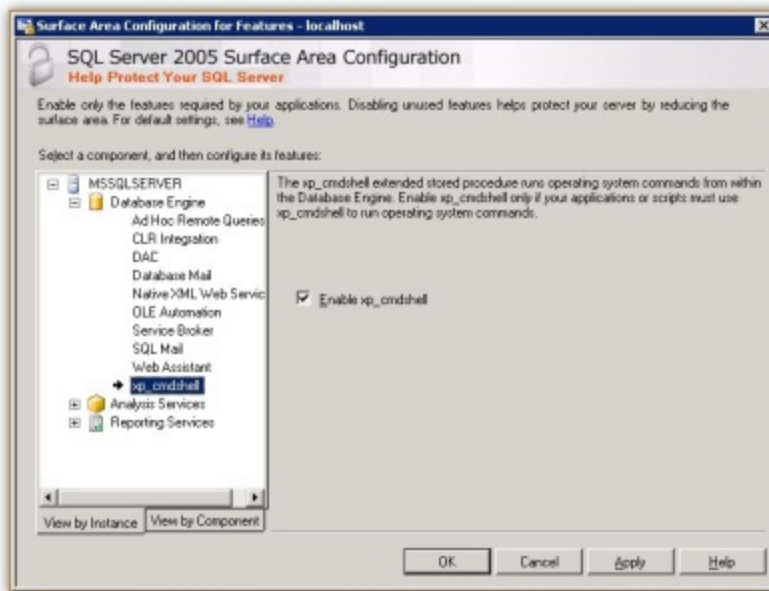
1. From the start menu, go to *Microsoft SQL Server 2005 -> Configuration Tools -> SQL Server Configuration Manager*
2. make sure **SQL Agent** is running and set to **Automatic**



3. From the start menu, go to *Microsoft SQL Server 2005 -> Configuration Tools -> SQL Server Surface Area Configuration*. Select *Surface Area Configuration for Services and Connections*. Under *Database Engine -> Remote Connections* select *Local and remote connections -> Using both TCP/IP and named pipes* and click OK.

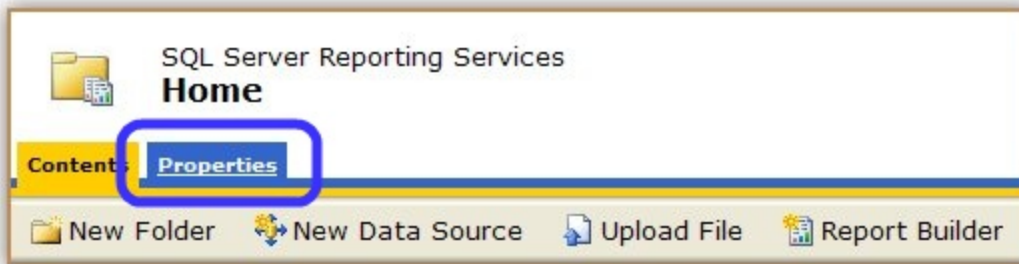


4. From the start menu, go to *Microsoft SQL Server 2005 -> Configuration Tools -> Surface Area Configuration for Features* and make sure that
- **xp_cmdshell** and
 - **CLR Integration** - are enabled (if not, enable them) and click OK



Configuration: Reporting Services

1. Point the browser to `//<dbserver>/reports`
2. Click the *Properties* tab



3. If the domain user used by SpeechMiner is not on the list, click on *New Role Assignment*, otherwise *Edit* the existing account
4. Give the account *Content Manager* role

SQL Server Reporting Services [Home](#) | [My Subscriptions](#) | [Site Settings](#) | [Help](#)

New Role Assignment

Search for:

Use this page to define role-based security for Home.

Group or user name:

Select one or more roles to assign to the group or user.

<input type="checkbox"/> Role↓	Description
<input type="checkbox"/> Browser	May view folders, reports and subscribe to reports.
<input checked="" type="checkbox"/> Content Manager	May manage content in the Report Server. This includes folders, reports and resources.
<input type="checkbox"/> My Reports	May publish reports and linked reports; manage folders, reports and resources in a users My Reports folder.
<input type="checkbox"/> Publisher	May publish reports and linked reports to the Report Server.
<input type="checkbox"/> Report Builder	May view report definitions.

1. From the start menu, go to *Microsoft SQL Server 2005 -> Configuration Tools -> Reporting Services Configuration*
2. On the left panel, click on *Email Settings* and fill the fields on the right
 - *Email Settings* should become green.
3. all but *Encryption Keys*, *Initialization* and *Execution Account* should be green

Reporting Services Configuration Manager: SQL VPS-9H567/MS/SQL SERVER

Configure Report Server

Connect Refresh

- Server Status
- Report Server Virtual Directory
- Report Manager Virtual Directory
- Windows Service Identity
- Web Service Identity
- Database Setup
- Encryption Keys
- Initialization
- Email Settings**
- Execution Account

E-mail Settings

Use this page to specify SMTP service settings for report server e-mail delivery. To configure additional e-mail delivery settings and specify the pickup directory location, you must modify the report server configuration file.

Sender Address:

Current Delivery Method:

SMTP Server:

Task Status:

☒ Apply Sender E-Mail Settings

Your configuration has been updated with your new e-mail information.