



Reporting 8.1

**CCPulse+**

**Administrator's Guide**

**The information contained herein is proprietary and confidential and cannot be disclosed or duplicated without the prior written consent of Genesys Telecommunications Laboratories, Inc.**

Copyright © 1999–2014 Genesys Telecommunications Laboratories, Inc. All rights reserved.

## **About Genesys**

Genesys is the world's leading provider of customer service and contact center software—with more than 4,000 customers in 80 countries. Drawing on its more than 20 years of customer service innovation and experience, Genesys is uniquely positioned to help companies bring their people, insights and customer channels together to effectively drive today's customer conversation. Genesys software directs more than 100 million interactions every day, maximizing the value of customer engagement and differentiating the experience by driving personalization and multi-channel customer service—and extending customer service across the enterprise to optimize processes and the performance of customer-facing employees. Go to [www.genesys.com](http://www.genesys.com) for more information.

Each product has its own documentation for online viewing at the Genesys Customer Care website or on the Documentation Library DVD, which is available from Genesys upon request. For more information, contact your sales representative.

## **Notice**

Although reasonable effort is made to ensure that the information in this document is complete and accurate at the time of release, Genesys Telecommunications Laboratories, Inc., cannot assume responsibility for any existing errors. Changes and/or corrections to the information contained in this document may be incorporated in future versions.

## **Your Responsibility for Your System's Security**

You are responsible for the security of your system. Product administration to prevent unauthorized use is your responsibility. Your system administrator should read all documents provided with this product to fully understand the features available that reduce your risk of incurring charges for unlicensed use of Genesys products.

## **Trademarks**

Genesys and the Genesys logo are registered trademarks of Genesys Telecommunications Laboratories, Inc. All other company names and logos may be trademarks or registered trademarks of their respective holders.

The Crystal monospace font is used by permission of Software Renovation Corporation, [www.SoftwareRenovation.com](http://www.SoftwareRenovation.com).

## **Technical Support from VARs**

If you have purchased support from a value-added reseller (VAR), please contact the VAR for technical support.

## **Customer Care from Genesys**

If you have purchased support directly from Genesys, please contact [Genesys Customer Care](#). Before contacting Customer Care, please refer to the [Genesys Care Program Guide](#) for complete contact information and procedures.

## **Ordering and Licensing Information**

Complete information on ordering and licensing Genesys products can be found in the [Genesys Licensing Guide](#).

## **Released by**

Genesys Telecommunications Laboratories, Inc. [www.genesys.com](http://www.genesys.com)

**Document Version:** 81rt\_ad\_ccpulse+\_11-2014\_v8.1.001.00



# Table of Contents

<b>Preface</b>	<b>7</b>
About CCPulse+ .....	7
Intended Audience.....	8
Making Comments on This Document .....	8
Contacting Genesys Customer Care.....	8
Document Change History .....	9
 <b>Chapter 1</b>	 <b>CCPulse+ Overview..... 11</b>
Overview.....	11
New in This Release.....	12
 <b>Chapter 2</b>	 <b>Fine-Tuning CCPulse+ Configuration ..... 13</b>
common and security Sections.....	14
Transport Layer Security Support.....	15
Client-Side Port Definition.....	15
CustomStatistic Section.....	17
HistoricalView Section .....	18
Log Section.....	20
ObjectFormat Section.....	21
Substitution Rules .....	24
Storage Section .....	26
UserInterface Section .....	30
View Section.....	35
Workspace Section.....	36
Changing the Display of Dates and Time .....	43
CCPulse+ Registry Settings .....	44
 <b>Chapter 3</b>	 <b>Historical Reporting Considerations for CCPulse+ ..... 49</b>
Data Mart Connections.....	49
Composite Metrics.....	50
Column Names.....	50
The Last N Intervals Parameter.....	51

	Historical Associations for Statistics .....	51
	Propagation of Template Changes .....	51
<b>Chapter 4</b>	<b>Server Connections to CCPulse+ .....</b>	<b>53</b>
	Configuration Server Connection Failure .....	54
	Stat Server Connection Failure .....	56
	DB Server Connection Failure .....	58
<b>Chapter 5</b>	<b>Using Custom Statistics .....</b>	<b>59</b>
	Identifying Custom Statistics .....	59
	Hidden Statistics .....	60
	Using JScript Language .....	60
	Referencing Basic Statistics .....	60
	Using Predefined Objects in Formulas .....	62
	Formatting the Results .....	68
	Displaying Capacity Information .....	68
<b>Chapter 6</b>	<b>Thresholds and Actions .....</b>	<b>71</b>
	Overview .....	71
	Predefined Objects .....	72
	Predefined Thresholds .....	77
	How to Use Thresholds .....	77
	Explanations of the Predefined Thresholds .....	79
	Predefined Actions .....	84
	How Actions Function .....	84
	Explanations of the Predefined Actions .....	85
<b>Chapter 7</b>	<b>Measuring CCPulse+/Stat Server Traffic .....</b>	<b>91</b>
	Determining Factors .....	91
	The Number of Requests .....	91
	The Number of Responses .....	92
	The Size of One Request/Response .....	92
<b>Chapter 8</b>	<b>Troubleshooting .....</b>	<b>93</b>
	Agents Having Trouble Logging In .....	93
	Wizards Are Disabled .....	94
	Import/Export Utility Is Disabled .....	94
	No DB Server Connection Error Message .....	95
	Agents Missing from Call Center Objects Pane .....	95

	General SQL Server Error Message .....	96
	Agents Cannot Monitor Agent Activity .....	96
	Sudden Stat Server Disconnection .....	96
	Stat Server Missing from New Workspace .....	97
	No Historical Associations Error Messages.....	97
	Cannot Recover Workspace.....	97
	Can't View Multi-Tenant Data .....	98
<b>Supplements</b>	<b>Related Documentation Resources .....</b>	<b>99</b>
	<b>Document Conventions .....</b>	<b>101</b>
<b>Index</b>	<b>.....</b>	<b>105</b>





## Preface

Welcome to the *Reporting 8.1 CCPulse+ Administrator's Guide*. This document presents information that CCPulse+ administrators need in order to fine-tune and troubleshoot CCPulse+ installation. This guide is valid only for the 8.1.x release of this product.

---

**Note:** For releases of this guide created for other releases of this product, please visit the Genesys Customer Care website, or request the Documentation Library DVD, which you can order by e-mail from Genesys Order Management at [orderman@genesys.com](mailto:orderman@genesys.com).

---

This preface contains the following sections:

- [About CCPulse+, page 7](#)
- [Intended Audience, page 8](#)
- [Making Comments on This Document, page 8](#)
- [Contacting Genesys Customer Care, page 8](#)
- [Document Change History, page 9](#)

In brief, you will find the following information in this guide:

- Special considerations concerning CCPulse+ historical reporting
- Instructions for how to customize the user interface
- Instructions for how to create and format custom statistics
- Explanations of the threshold and action scripts
- A list of the historical statistics that are associated with the CCPulse+ real-time statistics
- Troubleshooting suggestions

---

## About CCPulse+

CCPulse+ enables both real-time and historical monitoring of contact center activity. CCPulse+ monitors the status and statistics related to contact center objects (such as agents, queues, Routing Points, and interaction queues) and displays them on the user's desktop.

---

## Intended Audience

This guide is intended primarily for CCPulse+ administrators. It assumes that you have a basic understanding of:

- Computer-telephony integration concepts, processes, terminology, and applications.
- Network operation.
- Your own network configurations.

You should also be familiar with Genesys Framework architecture and functions, particularly Stat Server statistics and configuration.

CCPulse+ administrators have access to CCPulse+ functions that are not available to other users. CCPulse+ administrators can:

- Operate the Threshold and Action wizards.
- Operate the Template Wizard to create, modify, or delete CCPulse+ templates.
- Use the Import/Export Utility to copy CCPulse+ templates, thresholds, and actions from one storage to another.

A strong knowledge of VBScript might be required for some functionality, such as creating custom formulas.

---

## Making Comments on This Document

If you especially like or dislike anything about this document, please feel free to e-mail your comments to [Techpubs.webadmin@genesys.com](mailto:Techpubs.webadmin@genesys.com).

You can comment on what you regard as specific errors or omissions, and on the accuracy, organization, subject matter, or completeness of this document. Please limit your comments to the information in this document only and to the way in which the information is presented. Speak to Genesys Customer Care if you have suggestions about the product itself.

When you send us comments, you grant Genesys a nonexclusive right to use or distribute your comments in any way it believes appropriate, without incurring any obligation to you.

---

## Contacting Genesys Customer Care

If you have purchased support directly from Genesys, please contact [Genesys Customer Care](#).

Before contacting Customer Care, please refer to the [Genesys Care Program Guide](#) for complete contact information and procedures.



---

## Document Change History

This is the first release of the Reporting 8.5 CCPulse+ Administrator's Guide.

In the future, this section will list topics that are new or have changed significantly since the first release of this document.





## Chapter

# 1

## CCPulse+ Overview

This chapter introduces you to CCPulse+, which is a graphical user interface (GUI) component of Genesys Solution Reporting.

This chapter includes the following sections:

- [Overview, page 11](#)
- [New in This Release, page 12](#)

---

## Overview

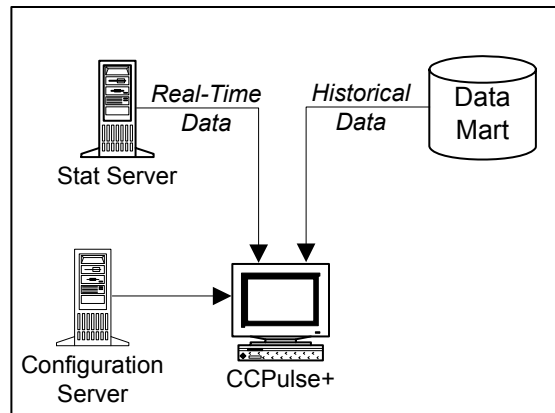
CCPulse+ enables both real-time and historical monitoring of contact center activity. CCPulse+ monitors the status and statistics that are related to contact center objects (such as agents, queues, Routing Points, and interaction queues) and displays them on the user's desktop. Using CCPulse+ you can:

- Customize real-time, historical, and query-based views of contact center objects.
- Monitor the current state and activity of objects throughout the contact center, to help make decisions about staffing, scheduling, and call-routing strategies.
- Create threshold/action associations that generate some kind of notification when a specified activity reaches the threshold level you set.
- Print views, which can then function as basic reports of contact center activity.

CCPulse+ interfaces with the Services and Configuration Layers of the Genesys Framework to monitor agent performance of one or more tenants from one or more sites.

If you are using Historical Reporting, CCPulse+ also connects to the Reporting Data Mart Services.

**Figure 1** illustrates the architecture delivering these capabilities. For detailed information on CCPulse+ interface, refer to the *Reporting 8.1 CCPulse+ Help*. For information about overall Solution Reporting architecture, refer to the *Reporting 8.1 Deployment Guide*.



**Figure 1: CCPulse+ Architecture**

## New in This Release

This section describes the new or changed functionality that was introduced in release 8.1.0.

- For a better management of the CCPulse+ workspaces:
  - CCPulse+ can add new objects (for example, agent group) to an existing workspace without creating a new workspace.
  - CCPulse+ can associate different workspaces to users sharing the same application via use of environment variables in storage path.
  - CCPulse+ offers additional enhancements for the Import/Export wizard (resizable dialog, multi-object selection).
- For a better usability of the CCPulse+ workspaces:
  - CCPulse+ can display information in table views in unsorted mode.
  - CCPulse+ can adjust and manage column width of the grid with keyboard shortcut.
- For security constraints, CCPulse+ now hides the IP address of servers.
- For performance reasons, CCPulse+ offers the possibility to disable and hide peek statistics button.

# 2

## Fine-Tuning CCPulse+ Configuration

After the initial configuration of the CCPulse+ Application object and installation, you can use Configuration Manager to update the CCPulse+ application. This chapter describes how to fine-tune the CCPulse+ configuration. It contains the following sections:

- [common and security Sections, page 14](#)
- [CustomStatistic Section, page 17](#)
- [HistoricalView Section, page 18](#)
- [Log Section, page 20](#)
- [ObjectFormat Section, page 21](#)
- [Storage Section, page 26](#)
- [UserInterface Section, page 30](#)
- [View Section, page 35](#)
- [Workspace Section, page 36](#)
- [Changing the Display of Dates and Time, page 43](#)
- [CCPulse+ Registry Settings, page 44](#)

The CCPulse+ application itself does not consider the case of configuration information it reads from Configuration Server. However, the RDBMS of your Configuration Server database might be case sensitive. As you fine-tune your CCPulse+ Application object, keep this in mind. Also, for those configuration options for which you specify `true/false` values, any of the following additional values is also valid:

- `yes/no`
- `y/n`
- `1/0`
- `on/off`

## common and security Sections

The `common` and `security` sections hold configuration options that are not unique to CCPulse+, but that do enable CCPulse+ functionality, do require your configuration, and are important for you to know. (See [Table 1](#).) Two security features that are provided in the Genesys software and supported by CCPulse+—“Transport Layer Security Support” on [page 15](#) and “Client-Side Port Definition” on [page 15](#)—are also described.

**Table 1: Configuration Options for the Common and Security Sections**

Section	Option	Description
common	enable-ipv6	<p>Use this option to enable IPv6 for all IP connections for CCPulse+. This option is configured in the <code>common</code> section of the CCPulse+ Application object by using either Genesys Administrator or Configuration Manager.</p> <p>Setting this option to 1, specifies that CCPulse+ supports IPv6. It is set to 0 by default, to ensure backward compatibility. For more information about how to configure IPv6, refer to the <i>Framework 8.1 Deployment Guide</i>.</p> <p>Default Value: 0</p> <p>Valid Values: 0, 1</p> <p>Change Takes Effect: Upon restart</p>
security	inactivity-timeout	<p>Use this option to specify the amount of time (in minutes) in which a user can be inactive—that is, not interact with the system in any way—without any impact on the user’s CCPulse+ session. After the timeout expires, the user is locked out of the CCPulse+ session. The user must log back in to continue with the session. This option is configured in the <code>security</code> section of the CCPulse+ Application object by using either Genesys Administrator or Configuration Manager.</p> <p>The default value of 0 means that the feature is disabled. For more information about how to configure inactivity timeout, refer to the <i>Genesys Security Deployment Guide</i>. For more information about how inactivity timeout functions in CCPulse+, refer to the <i>Reporting 8.1 CCPulse+ Help</i>.</p> <p>Default Value: 0</p> <p>Valid Value: Any nonnegative integer</p> <p>Change Takes Effect: Upon restart</p>

## Transport Layer Security Support

CCPulse+ supports secure data exchange among other Genesys components through the Transport Layer Security (TLS) protocol, which is an industry standard for secure communications over the Internet.

All Genesys components are configured in Configuration Manager. To enable secure data exchange among the components, you must configure additional parameters in the Host objects, as well as in the Application objects that represent these components.

For detailed instructions about how to add the TLS feature to existing connections of your Genesys configuration, including CCPulse+, see the *Genesys Security Deployment Guide*.

## Client-Side Port Definition

The client-side port definition feature enables you to control how CCPulse+ connects to various servers. This includes the ability to control the initial connection to a Configuration Server. Specifying client-side port is required when you want CCPulse+ to establish connections with servers behind a firewall that is configured to limit incoming connections to a well-defined set of client ports due to enhanced security considerations.

CCPulse+ configures client-side port definition using the `Network.ini` file. This file resides in the CCPulse+ installation directory. The contents of this file are loaded during CCPulse+ startup, and are not reloaded. If the `Network.ini` file is modified, you must restart CCPulse+ to allow the changes to take effect. If the file does not exist, then client-side port definition will not be available.

When CCPulse+ is about to connect to a server, CCPulse+ looks up the client-side parameters in the `Network.ini` file. If the appropriate information is found, CCPulse+ uses this in an attempt to connect. Otherwise, CCPulse+ attempts the connection as usual with the parameter selected automatically by Microsoft Windows.

### Network.ini File

This section explains the details about the format of the `Network.ini` file. The file format is similar to the standard Microsoft Windows INI file, except that it does not have sections, instead it has key-value pairs.

Each key-value pair in the `Network.ini` file should be formatted as follows:

```
target-host:target-port=[local-host]:local-port
```

- **target-host**—the name of the target host to which CCPulse+ connects. Specify this name the same way that it is specified in the Host object in Configuration Manager and in the Host parameter in the login dialog. This parameter is case-insensitive. For example, `myhost.mydomain.com`, `MYhOst.MyDoMaIn.com`, and `MYHOST.MYDOMAIN.COM` all refer to the same host.

---

**Note:** You must specify the target-host name the same way that it is specified in Configuration Server.

For example, if the full host name is:

- `myserever.mydomain.com`

But in Configuration Server it uses the short name:

- `myserver`

In the `Network.ini` file you also must use the short name:

- `myserver`

In the above example, if the `Network.ini` file contains the full host name (`myserever.mydomain.com`), then client-side port definition will not work.

---

- **target-port**—the port of the target server to which CCPulse+ connects. This must be a valid TCP port number. Zero and negative values are not allowed.
- **local-host**—the local host address that will be used to establish the connection with a specified target host and port.  
This is optional and only needs to be specified if the client machine has multiple network addresses. Skipping this step results in Microsoft Windows automatically selecting this parameter. In most cases (including VPN connections) this is acceptable.
- **local-port**—the local port used to establish the connection with a specified target host and port.  
This must be a valid TCP port number. Negative values are not allowed. A value of zero is allowed, but results in Microsoft Windows automatically selecting the port.

---

**Note:** CCPulse+ maintains two connections with Configuration Server, which means you must configure two client-side ports for this server. This is done by creating two separate entries in the `Network.ini` file that contain the same remote host and port, but a different local port, for example:

```
myserver.mydomain.com:7000=myworkstation.mydomain.com:59000
myserver.mydomain.com:7000=myworkstation.mydomain.com:59001
```

---



## CustomStatistic Section

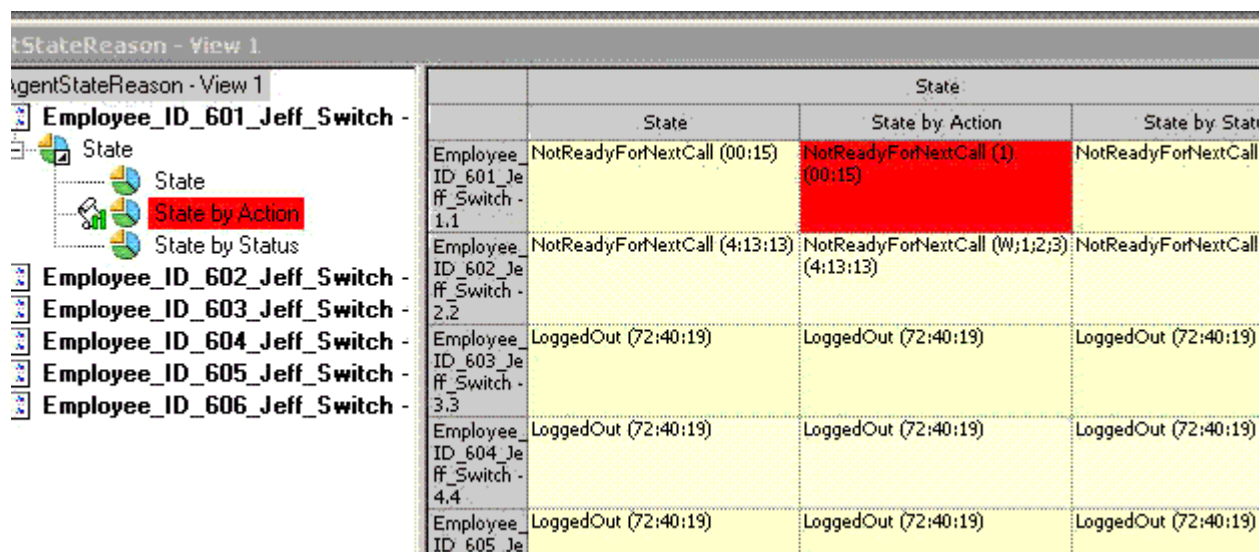
The `CustomStatistic` section holds two configuration options that affect the display of custom statistics within the CCPulse+ interface. (See [Table 2](#).)

**Table 2: Configuration Option for the CustomStatistic Section**

Option	Description
ExtendedCurrentStatus	<p>Use this option to configure CCPulse+ to display reasons in the current state statistics that are provided through agent views. If this option is set to <code>true</code>, CCPulse+ displays the reasons for the current state statistic as one or more strings that are separated by semicolons. If it is set to <code>false</code>, the reasons for the current state statistics are not displayed.</p> <p>To implement this feature fully, you must also define the underlying stat type for agent current state statistics, as follows:</p> <pre>Category=CurrentState MainMask=* Objects=Agent Subject=DNAction</pre> <hr/> <p><b>Note:</b> CCPulse+ template should not contain more than one <code>CurrentState</code> statistic with different values in the <code>Subject</code> for a particular object in the template. This may cause incorrect value for the formula based statistics related to the <code>CurrentState</code>.</p> <hr/> <p>This <code>DNAction</code>-based stat type enables Stat Server to provide data along with duration and actual status data.</p> <p>In <a href="#">Figure 2</a>, the <code>AgentStateReason</code> view displays a reason of 1 for the agent <code>Employee_ID_601</code> who is in the state <code>NotReadyForNextCall</code>. In this example, a threshold and action have also been applied to this statistic. For information on setting thresholds and actions, refer to the discussion starting on <a href="#">page 71</a>. <a href="#">Table 20</a> on <a href="#">page 72</a> shows how to use reasons in thresholds.</p> <p>Default Value: <code>false</code></p> <p>Valid Values: <code>true</code>, <code>false</code></p> <p>Change Takes Effect: Upon restart</p>

**Table 2: Configuration Option for the CustomStatistic Section (Continued)**

Option	Description
MediaTypes	<p>This option populates the drop-down list of media types that are available in the Media Filter section of the Properties dialog box for the CurrentTargetState statistic category.</p> <p>Default Value: voice</p> <p>Valid Value: &lt;comma-separated list of media types&gt; (Example: "voice, email, voip")</p> <p>Change Takes Effect: Upon restart</p>



tStateReason - View 1				
tStateReason - View 1		State		
		State	State by Action	State by Status
Employee_ID_601_Jeff_Switch - 1.1	State	NotReadyForNextCall (00:15)	NotReadyForNextCall (1) (00:15)	NotReadyForNextCall (00:15)
Employee_ID_602_Jeff_Switch - 2.2	State	NotReadyForNextCall (4:13:13)	NotReadyForNextCall (W;1;2;3) (4:13:13)	NotReadyForNextCall (4:13:13)
Employee_ID_603_Jeff_Switch - 3.3	State	LoggedOut (72:40:19)	LoggedOut (72:40:19)	LoggedOut (72:40:19)
Employee_ID_604_Jeff_Switch - 4.4	State	LoggedOut (72:40:19)	LoggedOut (72:40:19)	LoggedOut (72:40:19)
Employee_ID_605_Jeff_Switch - 5.5	State	LoggedOut (72:40:19)	LoggedOut (72:40:19)	LoggedOut (72:40:19)

**Figure 2: CCPulse+ Displays Reason when Option Is Set to True**

## HistoricalView Section

The HistoricalView section holds configuration options that affect the presentation of data in CCPulse+ historical views. The options in this section were designed after the DataMart ETL Service configuration options; thus, many cases, you can check your Genesys ETL Service configuration to determine the appropriate value for the corresponding CCPulse+ option. (See [Table 3](#).)

**Table 3: Configuration Options for the HistoricalView Section**

Option	Description
FirstDayOfWeek	<p>Use this option to specify the first day of the week for reports that have weekly intervals. Different counties begin the week on different days (for example, the first day of the week in the USA is Sunday, while the first day of the week in the Russia is Monday). If CCPulse+ is configured for historical reporting with weekly aggregation, please check your Genesys ETL Service Configuration to determine the appropriate value for this option.</p> <p><b>Note:</b> Standard ISO-8601 assumes that the first day of the week is Monday.</p> <p>Default Value: Sunday</p> <p>Valid Values: Sunday-Saturday</p> <p>Change Takes Effect: Upon restart</p>
MaxIntervals	<p>Use this option to specify the maximum number of time intervals requested from DB Server for a historical view.</p> <p>Default Value: 100</p> <p>Valid Values: Positive integer</p> <p>Change Takes Effect: Upon restart</p>
MinDayNumberInFirstWeek	<p>Use this option to specify how many days in the same week of the first week of the year should be included at a minimum. By default one day is included, which conforms to the United States and Russian week numbering rules. Please check your Genesys ETL Service Configuration to determine the appropriate value for this option.</p> <p>To emulate ISO-8601, configure this option to 4.</p> <p>Default Value: 1</p> <p>Valid Values: 1-7</p> <p>Change Takes Effect: Upon restart</p> <p><b>Note:</b> This option is effective only when <code>WholeWeeks</code> is configured to Yes.</p>
NoAggregationInterval	<p>This option specifies the time-interval resolution, in minutes, for nonaggregated data in your DataMart database. Configure this option <i>only</i> if you use a nonstandard data collection interval other than the default of 15 minutes.</p> <p>Default Value: 15</p> <p>Valid Values: 1-1440</p> <p>Change Takes Effect: Upon restart</p>

**Table 3: Configuration Options for the HistoricalView Section (Continued)**

Option	Description
TimeZone	<p>This option enables daylight savings time for the specified time zone.</p> <p>Default Value: default</p> <p>Valid Values: GMT+HH, GMT+HH:MM, GMT-HH:MM, GMT+HH:MMDST, GMT-HH:MMDST. The default value represents the default system settings from your current location, where HH is Hours (0-11), MM is Minutes (0-59), and DST will add DayLight Savings Time.</p> <p>Change Takes Effect: Upon restart</p>
WholeWeeks	<p>Use this option to specify whether CCPulse+ recognizes that DataMart is using whole weeks. Please check your Genesys ETL Service Configuration to determine the appropriate value for this option.</p> <p>Default Value: no</p> <p>Valid Values: yes, no</p> <p>Change Takes Effect: Upon restart</p>

## Log Section

The options you can configure in this section are the unified common log options described in *Framework 8.5 Configuration Options Reference Manual*. The options described in the [Table 4](#) are CCPulse+ specific.

**Table 4: CCPulse+ Specific Log Options**

Option	Description
CfgEventDetails	<p>Use this option to specify the level of detail in the log for messages received from the Configuration Server.</p> <p>Default Value: brief</p> <p>Valid Values: none, brief, fulls</p> <p>Change Takes Effect: Upon restart</p>
StatEventDetails	<p>Use this option to specify the level of detail in the log for messages received from the Stat Server.</p> <p>Default Value: brief</p> <p>Valid Values: none, brief, fulls</p> <p>Change Takes Effect: Upon restart</p>

**Table 4: CCPulse+ Specific Log Options (Continued)**

Option	Description
DbEventDetails	<p>Use this option to specify the level of detail in the log for messages received from the DB Server.</p> <p>Default Value: <code>brief</code></p> <p>Valid Values: <code>none</code>, <code>brief</code>, <code>full</code></p> <p>Change Takes Effect: Upon restart</p>

---

**Note:** For CCPulse+ to log messages received from the servers the `verbose` option has to be set to `all` (the same as `debug`).

---

Example of settings:

```
[log]
all=CallCenter.log
standard=console, CallCenter.log
verbose=all
StatEventDetails=full
CfgEventDetails=full
DbEventDetails=full
```

---

## ObjectFormat Section

Starting from release 8.0.1 CCPulse+ introduces functionality that allows you to define how CCPulse+ objects are displayed in the workspace, in all views, and in the Extended Current Status pane. The `ObjectFormat` section holds configuration options that affect the display format of each CCPulse+ object type. The name of each option in the `ObjectFormat` section represents the available CCPulse+ object types and the corresponding description defines what can be formatted by using the format string. (See [Table 5](#).)

**Table 5: Configuration Options for the ObjectFormat Section**

Option	Description
ACDPosition	This option defines the format of the ACD Position object.
Agent	This option defines the format of the Agent object.
AgentGroup	This option defines the format of the Agent Group object.
CallingList	This option defines the format of the Calling List object.

**Table 5: Configuration Options for the ObjectFormat Section (Continued)**

Option	Description
Campaign	This option defines the format of the Campaign object.
CampaignAgentGroup	This option defines the format of the Campaign Agent Group object.
CampaignCallingList	This option defines the format of the Campaign Calling List object.
CampaignPlaceGroup	This option defines the format of the Campaign Place Group object.
Chat	This option defines the format of the Chat object.
CoBrowse	This option defines the format of the CoBrowsing object.
Dialer	This option defines the format of the S-Dialer object.
DN	This option defines the format of the DN object.
EMail	This option defines the format of the E-mail object.
Extension	This option defines the format of the Extension object.
ExternalRoutingPoint	This option defines the format of the External Routing Point object.
ExternalRoutingPointInTheGroup	This option defines the format of the External Routing Point object shown inside a group.
Fax	This option defines the format of the Fax object.
InteractionQueue	This option defines the format of the Interaction Queue object.
Place	This option defines the format of the Place object.
PlaceGroup	This option defines the format of the Place Group object.
Queue	This option defines the format of the Queue object.
QueueGroup	This option defines the format of the Queue Group object.
QueueInTheGroup	This option defines the format of the Queue object shown inside a group.
Reason	This option defines the format of the Reason object.
RoutingPoint	This option defines the format of the Routing Point object.
RoutingPointGroup	This option defines the format of the Routing Point Group object.
RoutingPointInTheGroup	This option defines the format of the Routing Point object shown inside a group.
RoutingQueue	This option defines the format of the Routing Queue object.

**Table 5: Configuration Options for the ObjectFormat Section (Continued)**

Option	Description
RoutingQueueInTheGroup	This option defines the format of the Routing Queue object shown inside a group.
Script	This option defines the format of the Script object.
ServiceNumber	This option defines the format of the Service Number object.
ServiceNumberGroup	This option defines the format of the Service Number Group object.
ServiceNumberInTheGroup	This option defines the format of the Service Number object shown inside a group.
SimpleRouting	This option defines the format of the Simple Routing object.
Skill	This option defines the format of the Skill object.
Switch	This option defines the format of the Switch object.
Tenant	This option defines the format of the Tenant object.
Video	This option defines the format of the Video object.
VirtualQueue	This option defines the format of the Virtual Queue object.
VirtualQueueInTheGroup	This option defines the format of the Virtual Queue object shown inside a group.
VirtualRoutingPoint	This option defines the format of the Virtual Routing Point object.
VirtualRoutingPointInTheGroup	This option defines the format of the Virtual Routing Point object shown inside a group.
VoiceTreatmentPort	This option defines the format of the Voice Treatment Port object.
VoIP	This option defines the format of the VoIP object.

You have the ability to format each CCPulse+ object by using a format string that consists of two parts:

- a. The field types, and their widths and formats on the screen.

---

**Notes:**

- This part of the format string is compatible with the C-language `printf` function format argument. For more information, refer to <http://www.cplusplus.com/reference/cstdio/printf/>.
- The “;” (semicolon) symbol is allowed to occur *only* at the *END* of the first part of the format string, and not at any other location in this part of the string. The semicolon symbol is used to indicate the end of the first part of the format string.

---

**b.** The properties of the corresponding CCPulse+ object

**Example:  
Formatting an  
Agent**

For EmployeeID=Employee, FirstName=Johnathon, and LastName=Smith:

- `%.5s, %.5s %.5s`

produces the following result:

Emplo, John Smith

- `%.6s, %.7s %.5s`

produces the following result:

Employ, Johnath Smith

If the ObjectFormat section is defined, but not all object's format strings are configured, CCPulse+ uses substitution rules. (See [Table 6](#).) If the ObjectFormat section is not defined, CCPulse+ defaults to legacy formatting rules.

## Substitution Rules

When a format string for an object type is not defined, CCPulse+ can substitute the format string for this object with a more general object type. For example, Extension can be substituted with the format string for DN. Otherwise, it defaults to legacy formatting rules. [Table 6](#) lists the CCPulse+ format string substitutions.

**Table 6: CCPulse+ Format String Substitutions**

Object Type	Substitution
ACD Position	DN
Agent	No substitution. It displays as you format it by using the format string or defaults to legacy formatting rules.
Agent Group	No substitution. It displays as you format it by using the format string or defaults to legacy formatting rules.
Calling List	No substitution. It displays as you format it by using the format string or defaults to legacy formatting rules
Campaign	No substitution. It displays as you format it by using the format string or defaults to legacy formatting rules
Campaign Agent Group	Agent Group
Campaign Calling List	Calling List
Campaign Place Group	Place Group
Chat	DN



**Table 6: CCPulse+ Format String Substitutions (Continued)**

Object Type	Substitution
CoBrowsing	DN
DN	No substitution. It displays as you format it by using the format string or defaults to legacy formatting rules
E-Mail	DN
Extension	DN
External Routing Point	DN
External Routing Point in the Group	External Routing Point
Fax	DN
Interaction Queue	Script
Place	No substitution. It displays as you format it by using the format string or defaults to legacy formatting rules
Place Group	No substitution. It displays as you format it by using the format string or defaults to legacy formatting rules.
Queue	No substitution. It displays as you format it by using the format string or defaults to legacy formatting rules
Queue Group	No substitution. It displays as you format it by using the format string or defaults to legacy formatting rules
Queue in the Group	Queue
Reason	No substitution. It displays as you format it by using the format string or defaults to legacy formatting rules
Routing Point	No substitution. It displays as you format it by using the format string or defaults to legacy formatting rules
Routing Point Group	No substitution. It displays as you format it by using the format string or defaults to legacy formatting rules
Routing Point in the Group	Routing Point
Routing Queue	DN
Routing Queue in the Group	Routing Queue

**Table 6: CCPulse+ Format String Substitutions (Continued)**

Object Type	Substitution
S-Dialer	DN
Script	No substitution. It displays as you format it by using the format string or defaults to legacy formatting rules
Service Number	No substitution. It displays as you format it by using the format string or defaults to legacy formatting rules
Service Number Group	No substitution. It displays as you format it by using the format string or defaults to legacy formatting rules
Service Number in the Group	Service Number
Simple Routing	Script
Skill	No substitution. It displays as you format it by using the format string or defaults to legacy formatting rules
Switch	No substitution. It displays as you format it by using the format string or defaults to legacy formatting rules
Tenant	No substitution. It displays as you format it by using the format string or defaults to legacy formatting rules.
Video	DN
Virtual Queue	No substitution. It displays as you format it by using the format string or defaults to legacy formatting rules
Virtual Queue in the Group	Virtual Queue
Virtual Routing Point	No substitution. It displays as you format it by using the format string or defaults to legacy formatting rules
Virtual Routing Point in the Group	Virtual Routing Point
Voice Treatment Port	DN
VoIP	DN

---

## Storage Section

A *storage* is a file in which information of a specific type resides. CCPulse+ stores the following in separate storage files:

- Actions
- Templates
- Thresholds
- Workspaces

The Real-Time Reporting Wizard prompts you for values for these storages. As an alternate method, you can use Configuration Manager to configure storage locations in the Storage section of your CCPulse+ Application object. This is accomplished at the Options tab.

Beginning with the 8.0 release, you can specify the format of CCPulse+ storages as one of the following:

- CCPulse+ 7.x Storage, in Legacy (OLE storage format) which is provided for backward compatibility
- CCPulse+ Binary Data Files, in binary format, and CCPulse+ XML Data Files, in XML format

To enter a storage location within Configuration Manager:

1. Double-click the desired item in the Name column to open the Edit Option window.
2. In the Value text box, enter the full path and file name of the location in which the storage file should reside.
3. Click OK. The Storage list now displays the updated storage location.

---

**Notes:** The templates and works options must define valid and existing storages in order to start the CCPulse+ application.

If a storage location is to be shared by multiple users, ensure that all have access to it.

---

**Table 7: Configuration Options for the Storage Section**

Type	Option	Description
General Options	DefaultStorageType	Specifies which storage format that a CCPulse+ application uses. If this option is not defined or the value for it is specified incorrectly, CCPulse+ uses the default value, Legacy (OLE storage format). Valid values: Legacy, Binary, XML Default value: Legacy

**Table 7: Configuration Options for the Storage Section (Continued)**

Type	Option	Description
<b>Options for CCPulse 7.x Storages</b>	ActionsStorageFullPath	Defines the full path and name of the file in which CCPulse+ stores pre-8.0 actions. This option is retained for backward compatibility.
	TemplatesStorageFullPath	Defines the full path and the name of the file in which CCPulse+ stores pre-8.0 templates. This option is retained for backward compatibility.
	ThresholdsStorageFullPath	Defines the full path and the name of the file in which CCPulse+ stores pre-8.0 thresholds. This option is retained for backward compatibility.
	WorkspacesStorageFullPath	Defines the full path and the name of the file in which CCPulse+ stores pre-8.0 user workspaces. This option is retained for backward compatibility.
<b>Options for CCPulse+ Binary Data Files</b>	BinActionsStorageFullPath	Defines the full path to the valid directory name in which CCPulse+ stores, in binary format, actions that result when an administrator clicks <code>Finish</code> in the Actions Wizard. This path must preexist and point to a valid path; CCPulse+ does not create this path if it does not exist.
	BinTemplatesStorageFullPath	Defines the full path to the valid directory name in which CCPulse+ stores, in binary format, templates that result when an administrator creates a new template and clicks <code>Finish</code> in the Template Wizard. This path must preexist and point to a valid path; CCPulse+ does not create this path if it does not exist.
	BinThresholdsStorageFullPath	Defines the full path to the valid directory name in which CCPulse+ stores, in binary format, thresholds that result when an administrator clicks <code>Finish</code> in the Threshold Wizard. This path must preexist and point to a valid path; CCPulse+ does not create this path if it does not exist.
	BinWorkspacesStorageFullPath	Defines the full path to the valid directory name in which CCPulse+ stores, in binary format, user workspaces. This path must preexist and point to a valid path; CCPulse+ does not create this path if it does not exist.

**Table 7: Configuration Options for the Storage Section (Continued)**

Type	Option	Description
Options for CCPulse+ XML Data Files	XMLActionsStorage FullPath	Defines the full path to the valid directory name in which CCPulse+ stores, in XML format, actions that result when an administrator clicks <code>Finish</code> in the Actions Wizard. This path must preexist and point to a valid path; CCPulse+ does not create this path if it does not exist.
	XMLTemplatesStorage FullPath	Defines the full path to the valid directory name in which CCPulse+ stores, in XML format, templates that result when an administrator creates a new template and clicks <code>Finish</code> in the Template Wizard. This path must preexist and point to a valid path; CCPulse+ does not create this path if it does not exist.
	XMLThresholdsStorage FullPath	Defines the full path to the valid directory name in which CCPulse+ stores, in XML format, thresholds that result when an administrator clicks <code>Finish</code> in the Threshold Wizard. This path must preexist and point to a valid path; CCPulse+ does not create this path if it does not exist.
	XMLWorkspacesStorage FullPath	Defines the full path to the valid directory name in which CCPulse+ stores, in XML format, user workspaces. This path must preexist and point to a valid path; CCPulse+ does not create this path if it does not exist.

## UserInterface Section

The UserInterface section holds configuration options with which you can specify how CCPulse+ is to display data in its interface. (See [Table 8](#).)


**Table 8: Configuration Options for the UserInterface Section**

Option	Description
DisabledCommands	<p>Use this option to disable user interface commands in menus and toolbars. This option affects all users.</p> <p>Default Value: FileSaveXML (if UserInterface.EnableXMLExport=false), ViewConsole (if Console.Enable=false), ViewCapacity (if Workspace.EnableAgentCapacity=false and Workspace.EnableAgentGroupCapacity=false)</p> <p>Valid Values: FileNew, FileSave, FileSaveXML, FileSaveHTML, FilePrint, ViewConsole, ViewCapacity, ViewPeekStatistics, ToolsSettings, ToolsImportExport, ToolsTemplateWizard, ToolsThresholdWizard, ToolsActionVizard</p> <p>Change Takes Effect: Upon restart</p>
DisabledUserCommands	<p>Use this option to disable user interface commands in menus and toolbars. This option affects non-admin users.</p> <p>Default Value: ToolsImportExport, ToolsTemplateWizard, ToolsThresholdWizard, ToolsActionVizard</p> <p>Valid Values: FileNew, FileSave, FileSaveXML, FileSaveHTML, FilePrint, ViewConsole, ViewCapacity, ViewPeekStatistics, ToolsSettings, ToolsImportExport, ToolsTemplateWizard, ToolsThresholdWizard, ToolsActionVizard</p> <p>Change Takes Effect: Upon restart</p>
DisableThresholdsDlg	<p>Use this option to enable contact-center operators who are configured as CCPulse+ Users, to set thresholds, or to prevent them from doing this. This option controls visibility of the Set Threshold menu item on the shortcut menu that is invoked when the user right-clicks a statistic or statistics group. Setting this configuration option has no meaning for users who are configured as CCPulse+ Administrators. Full threshold and action functionality is always available to CCPulse+ Administrators.</p> <p>Default Value: false</p> <p>Valid Values: true, false</p> <p>Change Takes Effect: Upon restart</p> <p><b>Note:</b> This option is not present in the CCPulse+ template.</p>

**Table 8: Configuration Options for the UserInterface Section (Continued)**


Option	Description
EnableDNAliases	<p>Use this option to configure CCPulse+ to display either DN numbers or DN aliases in the CCPulse+ workspace. To display DN aliases, specify <code>true</code> for this option's value. To display DN numbers, specify <code>false</code>.</p> <p>CCPulse+ synchronizes DN aliases with any changes you might make to a DN object's properties.</p> <p>Default Value: <code>true</code></p> <p>Valid Values: <code>true</code>, <code>false</code></p> <p>Change Takes Effect: Upon restart</p>
EnableXMLExport	<p>Use this option to allow users to make use of the <b>Export to XML</b> menu item on the CCPulse+ <b>File</b> menu. The <b>Export to XML</b> menu item enables users to export their workspaces in XML format to a location that they designate. If this option is set to the default value of <code>false</code>, this menu item will not appear on the <b>File</b> menu.</p> <p>The workspace that you export is for informational purposes only. CCPulse+ does not import information about workspaces from this file nor does the export affect the location of the workspaces storage.</p> <p>Default Value: <code>false</code></p> <p>Valid Values: <code>true</code>, <code>false</code></p> <p>Change Takes Effect: Upon restart</p>
HideDisabledCommands	<p>Use this option to specify whether to remove, disabled by the <a href="#">DisabledCommands</a> and <a href="#">DisabledUserCommands</a> options, commands from menus and toolbars. This option affects all users.</p> <p>Default Value: <code>false</code></p> <p>Valid Values: <code>true</code>, <code>false</code></p> <p>Change Takes Effect: Upon restart</p>
ShowAgentLoginID	<p>Use this option to configure CCPulse+ to display the agent's login ID in the <b>Extended Current Status</b> window. Specify <code>true</code> to display login IDs, or <code>false</code> to hide them. This window might display n/a (for "not applicable") in place of a login ID when the ID is unavailable, or the agent is logged out.</p> <p>This option does not apply to Agent Group objects or other object types.</p> <p>Default Value: <code>true</code></p> <p>Valid Values: <code>true</code>, <code>false</code></p> <p>Change Takes Effect: Upon restart</p>

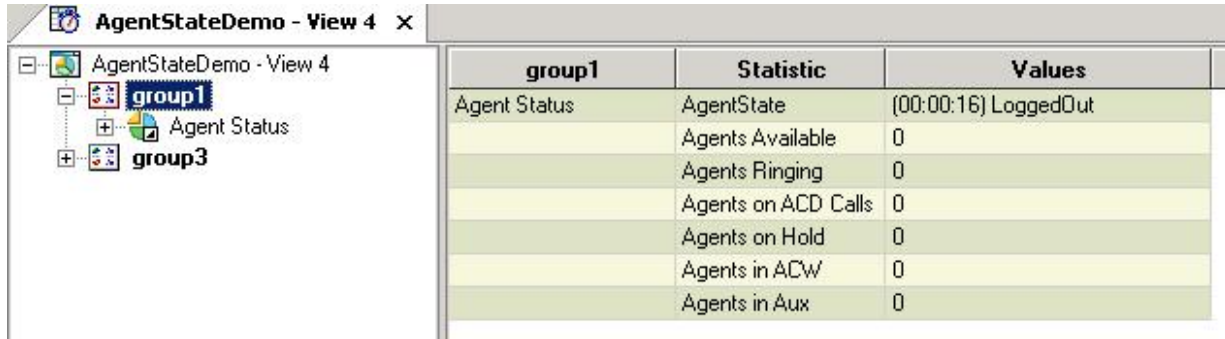
**Table 8: Configuration Options for the UserInterface Section (Continued)**

Option	Description
ShowAgentSkills	<p>Use this option to configure CCPulse+ to display the skills associated with selected agents in the Extended Current Status window. Specify <code>true</code> to display agent skills or <code>false</code> to hide them. If no skills are defined in Configuration Manager or if skills have not been assigned to the selected agent(s) and ShowAgentSkills is set to <code>true</code>, CCPulse+ displays n/a (for not applicable) in the Extended Current Status window.</p> <p>The 7.0.1 release of CCPulse+ introduced a Skill icon (  ), which precedes the listing of skills in the Extended Current Status window.</p> <p>Default Value: <code>false</code></p> <p>Valid Values: <code>true</code>, <code>false</code></p> <p>Change Takes Effect: Upon restart</p>
ShowDurationBefore StatusName	<p>Use this option to affect the format in which CCPulse+ displays information about current status in the Views pane. If this option is set to <code>true</code>, CCPulse+ displays first the duration of a particular state, followed by the current state, by using the format: (hh:mm:ss) currstatus. If it is set to <code>false</code>, CCPulse+ first displays the name of the current status and then its duration: currstatus (hh:mm:ss).</p> <p>By default, CCPulse+ displays status duration after the current status, even if the option is absent from the configuration of your CCPulse+ Application object. Such placement facilitates sorting by current status should you want to use this functionality. (Incidentally, CCPulse+ does not allow you to sort by duration.) You might, however, prefer that duration precede current status. <a href="#">Figure 3</a> provides an illustration of this preference.</p> <p>Default Value: <code>false</code></p> <p>Valid Values: <code>true</code>, <code>false</code></p> <p>Change Takes Effect: Upon restart</p>



**Table 8: Configuration Options for the UserInterface Section (Continued)**

Option	Description
ShowStatusReasons	<p>Use this option to configure CCPulse+ to display reason-code attached data. This data provides a hardware- or software-related reason for an object's current status and is associated with the agents that you select in the Extended Current Status window. CCPulse+ obtains this information from Stat Server, which, in turn, gets this information from one of two attributes that are supplied by each T-Server TEvent:</p> <ul style="list-style-type: none"> <li>• Extensions attribute—Its ReasonCode key (for hardware-related reasons).</li> <li>• Reasons attribute (for data that is supplied by software such as the Genesys SoftPhone or ActiveX).</li> </ul> <p>Specify true to display the value of this reason code or false to hide it.  Default Value: false  Valid Values: true, false  Change Takes Effect: Upon restart  Reason codes apply only to the following noncall-related statuses:</p> <ul style="list-style-type: none"> <li>• LoggedIn</li> <li>• LoggedOut</li> <li>• AfterCallWork</li> <li>• Ready</li> <li>• NotReady</li> </ul> <p>As reason codes are associated with a particular DN, CCPulse+ cannot display reason codes if the agent is not logged in to a DN. In addition, CCPulse+ cannot display reason codes if they are attached to a TEvent in other than the Reasons or Extension attributes. If T-Server attaches no data to the TEvent, CCPulse+ displays n/a (for not applicable) in the Extended Current Status window.</p> <p>The 7.0.1 release of CCPulse+ introduced a Reasons icon (  ), which precedes the listing of reasons in the Extended Current Status window. Refer to the <i>Genesys 7 Events and Models Reference Manual</i> for information about TEvent structure.</p> <p><b>Note:</b> In some cases, CCPulse+ might show user data and business attributes; (for example, MediaType), in addition to actual reasons. Use a string for the reasons values; (for example, Lunch or Meeting), to separate actual reasons from possible non- reason data. Extended Current State window and Current state in the View can show reasons if enabled by the appropriate option.</p>



group1	Statistic	Values
Agent Status	AgentState	(00:00:16) LoggedOut
	Agents Available	0
	Agents Ringing	0
	Agents on ACD Calls	0
	Agents on Hold	0
	Agents in ACW	0
	Agents in Aux	0

**Figure 3: CCPulse+ Displays Duration First when ShowDurationBeforeStatusName Is Set to True**

[Table 9](#) below provides a description of the user interface commands.

**Table 9: User Interface Commands**

Command	Description
FileNew	Disables File New menu item.
FileSave	Disables File Save and File Save As menu items.
FileSaveXML	Disables File Save As XML menu item. It takes precedence over the EnableXMLExport option in the UserInterface section.
FileSaveHTML	Disables File Save As HTML menu item.
FilePrint	Disables File Print, File Print Preview and File Page Setup menu items.
ViewConsole	Disables View Console menu item and the console window. It takes precedence over the Enable option in the Console section.
ViewCapacity	Disables View Capacity menu item and the capacity window.
ViewPeekStatistics	Disables View Peek Statistics menu item.
ToolsSettings	Disables ToolsSettings menu item.
ToolsImportExport	Disables Tools Import/Export menu item.
ToolsTemplateWizard	Disables Tools Template Wizard menu item.
ToolsThresholdWizard	Disables Tools Threshold Wizard menu item.
ToolsActionVizard	Disables Tools Action Wizard menu item.

## View Section

The **View** section holds configuration options that affect the presentation of data in CCPulse+ views. (See [Table 10](#).)

**Table 10: Configuration Options for the View Section**

Option	Description
CurrentStateRefreshInterval	<p>This option specifies the time interval at which <b>CurrentState</b> statistics will be refreshed in the view. If the view does not contain any <b>CurrentState</b> statistics, CCPulse+ ignores this option.</p> <p>CCPulse+ adjusts any value specified over the maximum value to the maximum value.</p> <p><b>Note:</b> If you enter a 0 (zero), a negative number, or any alphanumeric string, you will disable this setting. The current state duration will be not be refreshed until it receives an update from the Stat Server.</p> <p>Default Value: 5 (seconds)</p> <p>Valid Values: 0 to 86399</p> <p>Change Takes Effect: Upon restart</p>
DelayBeforeRemoval	<p>This option specifies the number of seconds that logged-out agents remain visible, but in a dimmed (greyed out) state, in a real-time V/AG dynamic membership view, before CCPulse+ removes them from the view entirely. A value of 0 instructs CCPulse+ to immediately remove agents from the view; however, in reality, some small amount time could pass before the view is updated. CCPulse+ resets any value specified outside the range of valid values to 0.</p> <p>Default Value: 15 (seconds)</p> <p>Valid Values: 0 to 3600</p> <p>Change Takes Effect: Upon restart</p>
DisableCreateRemoveViews	<p>Use this option to enable CCPulse+ Administrators to restrict the creation and removal of views by contact-center operators, or to prevent them from doing this.</p> <p>The setting of this configuration option has no meaning for users who are configured as CCPulse+ Administrators. Administrators can always create and/or remove views, regardless of this option's setting. However, setting this value to <b>true</b> prevents agents who are configured as CCPulse+ Users from performing these actions.</p> <p>Default Value: <b>false</b></p> <p>Valid Values: <b>true</b>, <b>false</b></p> <p>Change Takes Effect: Upon restart</p> <p><b>Note:</b> This option is not present in the CCPulse+ template.</p>

**Table 10: Configuration Options for the View Section (Continued)**

Option	Description
DisableHideShowActions OnGraph	<p>Use this option to enable or disable hide/show actions on the Graph view. Setting this configuration option will greatly reduce the time it takes for CCPulse+ to open a workspace with hide/show actions.</p> <p>Default Value: <code>false</code></p> <p>Valid Values: <code>true</code>, <code>false</code></p> <p>Change Takes Effect: Upon restart</p> <p><b>Note:</b> This option is not present in the CCPulse+ template.</p>
DisableRowColVisibility Change	<p>Use this option to enable contact-center operators who are configured as CCPulse+ Users, to alter the visibility of rows and/or columns in the Table view, or to prevent them from doing this.</p> <p>In addition, if you set this configuration option to <code>true</code>, the shortcut menu items to hide and show rows and columns are disabled for CCPulse+ users.</p> <p>The setting of this configuration option has no meaning for users who are configured as CCPulse+ Administrators. Administrators can always hide and show rows and columns in the Table view and the corresponding shortcut menu items remain enabled, regardless of this option's setting.</p> <p>Default Value: <code>false</code></p> <p>Valid Values: <code>true</code>, <code>false</code></p> <p>Change Takes Effect: Upon restart</p> <p><b>Note:</b> This option is not present in the CCPulse+ template.</p>
MaxNumberOfAgents	<p>This option specifies the maximum number of agents that CCPulse+ displays in a real-time V/AG dynamic membership view regardless of the number of available agents or their current status. The default value that is provided in the CCPulse+ 7.5<sup>+</sup> application template allows up to 75 agents in the display; this is also the value that CCPulse+ uses if this option is not set. CCPulse+ sets any value that is outside the range of valid values to 1.</p> <p>Default Value: 75 (agents)</p> <p>Valid Values: 1 to 450</p> <p>Change Takes Effect: Upon restart</p>

## Workspace Section

The Workspace section holds configuration options that affect your CCPulse+ workspace. (See [Table 11](#).) Note that because the options defined in this section are defined within the CCPulse+ Application object in Configuration Server, their settings affect all CCPulse+ instances that are configured to use the object. You cannot change these settings for every instance of CCPulse+

individually. Instead, you have to define a new `Application` object for each combination of configuration settings that you wish to set and then configure each instance to use the appropriate `Application` object.

**Table 11: Configuration Options for the Workspace Section**

Option	Description
<code>CurrentStateEnable</code>	<p>Use this option to enable or disable the display of current status for all configuration objects that are selected for monitoring on the Call Center Objects pane. Consider using this option if you want to increase runtime performance of CCPulse+ and decrease startup time—especially if you regularly open workspaces that contain a large number of objects.</p> <p>Default Value: <code>true</code></p> <p>Valid Values: <code>true</code>, <code>false</code></p> <p>Change Takes Effect: Upon restart</p>

**Table 11: Configuration Options for the Workspace Section (Continued)**

Option	Description
DisableAgentCurrentState	<p>Use this option to enable or disable the visibility of current-state information on individual agents in all CCPulse+ panes for contact-center operators who are configured as CCPulse+ Users.</p> <p>The visibility of current-state information for other object types remains unaffected by the setting of this option; instead, visibility is controlled by the <code>CurrentStateEnable</code> configuration option.</p> <p>In situations in which your configuration includes one-person agent groups, consider adding a pseudo Person object to these groups, to preserve an environment in which operators should not be able to obtain current-state information on individual agents.</p> <p>Setting this option also affects all contact-center operators configured as CCPulse+ Users who are logged into the same CCPulse+ application, by preventing the creation and displaying of other agent statistics. To restrict users on an individual basis, set the <code>AgentStats</code> registry setting on <a href="#">page 45</a>.</p> <p>Setting this option has no meaning for users who are configured as CCPulse+ Administrators. Administrators can always create and/or display agent statistics and view current-state information on individual agents regardless of this option's setting. However, setting this value to <code>true</code> prevents agents who are configured as CCPulse+ Users from performing the following actions:</p> <ul style="list-style-type: none"> <li>• Displaying agent status icons for agents in tree view.</li> <li>• Creating historical and real-time views for individual agents.</li> <li>• Creating historical and real-time views for members, and dynamic membership views for agent groups.</li> <li>• Setting thresholds for agents.</li> <li>• Displaying an extended status for individual agents.</li> <li>• Displaying an extended status for agent groups.</li> </ul> <p>Default Value: <code>false</code></p> <p>Valid Values: <code>true</code>, <code>false</code></p> <p>Change Takes Effect: Upon restart</p>

**Table 11: Configuration Options for the Workspace Section (Continued)**

Option	Description
DisableThresholdsDlg	<p>Use this option to enable or disable contact-center operators who are configured as CCPulse+ Users, to set and/or remove thresholds. The setting of this configuration option has no meaning for users who are configured as CCPulse+ Administrators. Administrators can always set and/or remove thresholds, regardless of this option's setting. However, setting this value to <code>true</code> prevents agents who are configured as CCPulse+ Users from performing these actions.</p> <p>Default Value: <code>false</code></p> <p>Valid Values: <code>true</code>, <code>false</code></p> <p>Change Takes Effect: Upon restart</p>
EnableAgentCapacity	<p>This option enables or disables the display of agent-capacity information per media in the <code>Object</code> tree of the CCPulse+ interface.</p> <p>Default Value: <code>false</code></p> <p>Valid Values: <code>true</code>, <code>false</code></p> <p>Change Takes Effect: Upon restart</p>
EnableAgentCapacityStatus	<p>This option, in conjunction with the <code>EnableAgentCapacity</code> configuration option, enables or disables the display of agent and agent group capacity information in the <code>Object</code> tree.</p> <p>If this option is set to <code>true</code> and the <code>EnableAgentCapacity</code> option is set to <code>true</code>, CCPulse+ displays agents' capacity in the <code>Object</code> tree. If this option is set to <code>false</code>, or the <code>EnableAgentCapacity</code> option is set to <code>false</code>, CCPulse+ does not show capacity.</p> <p>Default Value: <code>false</code></p> <p>Valid Values: <code>true</code>, <code>false</code></p> <p>Change Takes Effect: Upon restart</p>

**Table 11: Configuration Options for the Workspace Section (Continued)**

Option	Description
EnableAgentGroupCapacity	<p>This option, in conjunction with the EnableAgentCapacity and EnableAgentCapacityStatus configuration options, enables or disables the calculation of capacity per media for agent groups in the Object tree of the CCPulse+ interface.</p> <p>If this option is set to true and both the EnableAgentCapacity and EnableAgentCapacityStatus option are also set to true, CCPulse+ displays agent groups' capacity in the Object tree. If this option is set to false, or either of the EnableAgentCapacity or EnableAgentCapacityStatus option are set to false, CCPulse+ does not show capacity.</p> <p>Agent group capacity is defined as the sum of the corresponding media capacity values for the agents in the group:</p> $\text{Group max capacity} / \text{current interactions} / \text{routable interactions} = \text{Sum (Agent max capacity} / \text{current interactions} / \text{routable interactions)}$ <p><b>Note:</b> Displaying agent group capacity will have a linear impact on CCPulse+ performance (depending on the number of calls that the group members receive).</p> <p>Default Value: false</p> <p>Valid Values: true, false</p> <p>Change Takes Effect: Upon restart</p>
IgnoreNewObjectNotifications	<p>Use this option to specify whether CCPulse+ should accept or ignore notifications from Configuration Server about newly created reportable objects. If this option is set to true, CCPulse+ ignores notifications of new objects—any new reportable objects will not appear in the workspace. If this option is set to false, new objects will appear instantly in the Call Center Objects pane. When the workspace is saved, these objects become a permanent part of the workspace, like the other configuration objects that were explicitly selected for monitoring when the workspace was initially created.</p> <p>Default Value: false</p> <p>Valid Values: true, false</p> <p>Change Takes Effect: Upon restart</p>

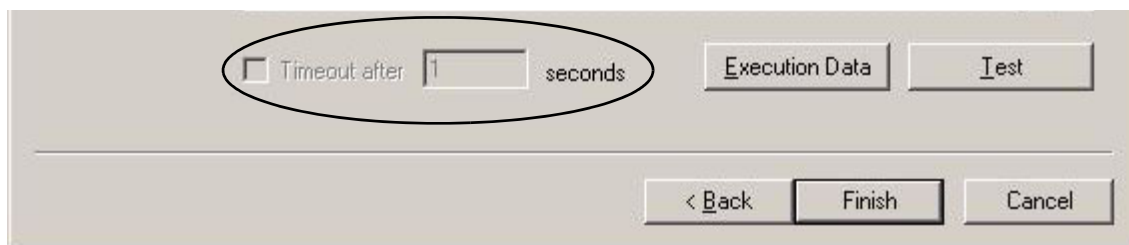


**Table 11: Configuration Options for the Workspace Section (Continued)**

Option	Description
RetainSelectedTypes	<p>Use this option to specify whether CCPulse+ should store the information about the selected object types in the workspace.</p> <p>Default Value: <code>true</code></p> <p>Valid Values: <code>true</code>, <code>false</code></p> <p>Change Takes Effect: Upon restart</p> <hr/> <p><b>Note:</b> While a previous release of CCPulse+ has an ability to load a workspace that is saved in CCPulse+ release 8.1, the information about the selected types is ignored. Re-saving the workspace in a previous release of CCPulse+ results in loss of information about the selected types.</p> <hr/>
SafeScriptingMode	<p>Use this option to specify whether CCPulse+ will spawn a separate thread to execute VBScripts. If set to <code>true</code>, threshold and action VBScripts will be executed using a separate thread. This is a safe but slower method of operation. If set to <code>false</code>, all scripts will be executed using the main process, and the <code>Timeout</code> option, shown on the <code>Threshold Creation</code> and <code>Action Creation</code> pages of the <code>Threshold</code> and <code>Action</code> wizards (respectively), will become disabled. <a href="#">Figure 4</a> shows the bottom half of the <code>Threshold Creation</code> page with the timeout area disabled.</p> <p>Default Value: <code>true</code></p> <p>Valid Values: <code>true</code>, <code>false</code></p> <p>Change Takes Effect: Upon restart</p>

**Table 11: Configuration Options for the Workspace Section (Continued)**

Option	Description
UseStatServerVirtualGroups	<p>Use this configuration option to control from where CCPulse+ gathers information about virtual agent group membership—from either Stat Server or Configuration Server. Stat Server enables you to specify a wider range of criteria in order to qualify virtual agent group membership. These criteria include a consideration of the ACD queue or switch into which an agent is logged in, skill expressions that are configured for the agent, and real-time data such as status. Configuration Server, on the other hand, uses skill expressions alone to determine group composition. Refer to “Virtual Agent Groups” in the <i>Framework Stat Server User’s Guide</i> for additional information.</p> <p>If this option is set to <code>true</code>, CCPulse+ obtains information about group membership from Stat Server. If it is set to <code>false</code>, CCPulse+ obtains information from Configuration Server.</p> <p>Regardless of the setting of this option, please note that the new feature—creating dynamic agent- and virtual agent-group views—uses Stat Server as the source for obtaining group membership. Refer to the “Creating Dynamic Virtual/Agent Group Views” topic in <i>Reporting CCPulse+ Help</i> for more information about dynamic views.</p> <p><b>Note:</b> This feature is available only in the CCPulse+ real-time environment. CCPulse+ historical reporting does not capture dynamic changes to the content of virtual agents groups.</p> <p>Default Value: <code>false</code></p> <p>Valid Values: <code>true</code>, <code>false</code></p> <p>Change Takes Effect: Upon restart</p>
WorkspaceAutoLoad	<p>This option determines whether CCPulse+ loads the last workspace used when CCPulse+ starts. If this option is set to <code>true</code>, CCPulse+ loads the workspace that you were using the last time that you closed CCPulse+, to enable you to bypass the explicit selection steps that are otherwise required. If it is set to <code>false</code>, CCPulse+ does not automatically load any workspace.</p> <p>CCPulse+ stores the name of the most recently used workspace in the Microsoft Windows registry.</p> <p>Default Value: <code>true</code></p> <p>Valid Values: <code>true</code>, <code>false</code></p> <p>Change Takes Effect: Upon restart</p>

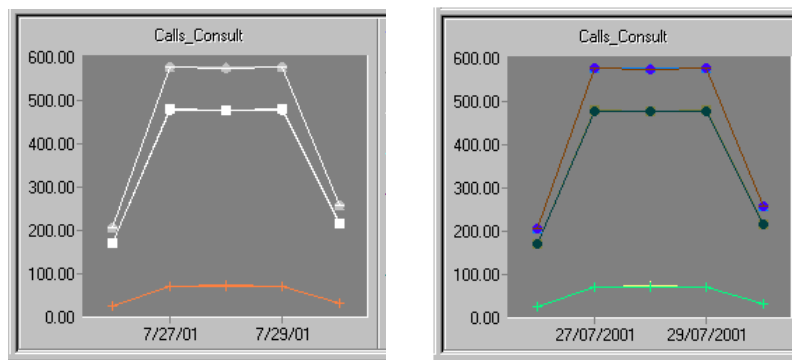


**Figure 4: No Timeout Specification with SafeScriptingMode=False**

## Changing the Display of Dates and Time

CCPulse+ release 7.0.1 introduced functionality that allows you to define how time and dates appear in hourly and daily historical reports. Specify the desired format on the Date and Time tabs of your Control Panel's Regional Settings, and CCPulse+ will automatically change its column-title display of your hourly and daily reports to the format that is specified. CCPulse+ also uses these regional settings for date and time formats on the Daily and Hourly Historical report titles.

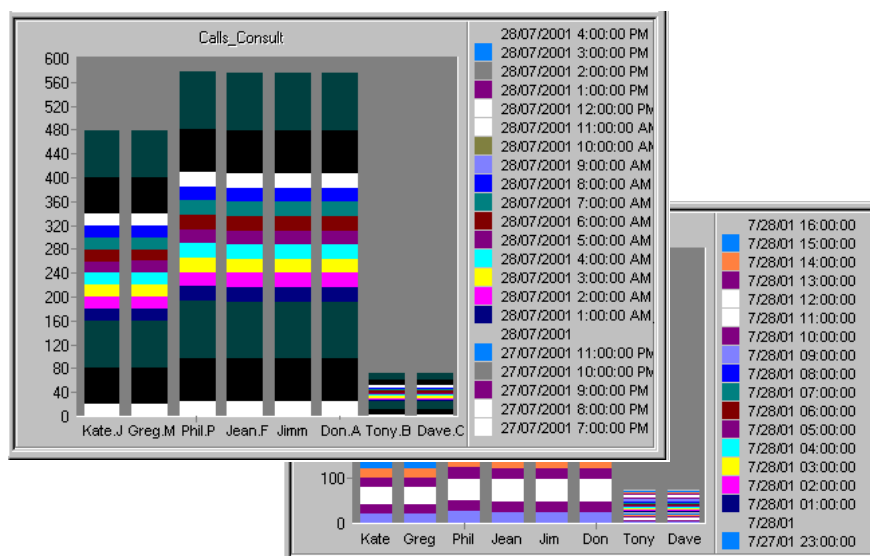
[Figure 5](#) shows instances of two different hour-format settings. The first image uses a regional hour format of M/d/yy representing July 27, 2001 as 7/27/01. The second image uses the dd/MM/yyyy format and displays the same date as 27/07/2001.



**Figure 5: Different Hour-Format System Settings Reflected in Historical Daily Views**

[Figure 6](#) shows instances of two different time-format settings. The first image uses a regional time format of h:mm:ss tt, representing 4 o'clock in the afternoon as 4:00:00 PM. The second image uses the HH:mm:ss format and displays the same time as 16:00:00.

Although CCPulse+ accepts dynamic system changes of regional time and dates, if CCPulse+ is currently displaying a view when the change is made, you must deactivate and reactivate the view in order to observe its effect.



**Figure 6: Different Time-Format System Settings Reflected in Historical Hourly Views**

## CCPulse+ Registry Settings

You can edit the AgentStats CCPulse+ configuration setting *only* by using the Microsoft Windows Registry Editor. Even though you can edit the FormatAgentInfo configuration setting using the Microsoft Windows Registry Editor, Genesys recommends that you use the CfgApplication configuration option in the ObjectFormat section to set this value.

Where applicable, Genesys recommends that you use the Settings menu option in CCPulse+ to set these values. However, if you prefer to configure these settings directly using the Registry, refer to the path information that is provided for each setting in the following table. (See [Table 12.](#))

You can no longer edit the following three CCPulse+ configuration settings by using the Microsoft Windows Registry Editor. They have been removed from the registry and moved to the Settings menu option under the Tools menu of the CCPulse+ interface:

- GraphTitleFontSize
- GraphBkColor
- GraphAxisFontSize

**Note:** Unlike settings that are configured in the CCPulse+ Application object, which apply to all CCPulse+ instances that use that application, registry key changes affect only the local workstation.

Access the root for all these settings through the following path in the Registry:  
HKEY\_CURRENT\_USER\Software\GCTI\CallCenter\

Configure your user interface by entering the desired value next to the appropriate key. (See [Table 12.](#))

**Table 12: CCPulse+ Registry Settings**

Registry Setting	Description
AgentStats	<p>Use this registry setting to enable CCPulse+ Administrators to prevent the creation and displaying of other agent statistics by contact-center operators who are configured as CCPulse+ Users on an individual basis.</p> <p>Setting the AgentStats registry setting has no meaning for users who are configured as CCPulse+ Administrators. Administrators can always create and/or display agent statistics, regardless of this setting. However, setting this value to RESTRICTED_STATS prevents agents who are configured as CCPulse+ Users from performing the following actions:</p> <ul style="list-style-type: none"> <li>• Displaying agent status icons for agents in tree view.</li> <li>• Creating historical and real-time views for individual agents.</li> <li>• Creating historical and real-time views for members, and dynamic membership views for agent groups.</li> <li>• Setting thresholds for agents.</li> <li>• Displaying an extended status for individual agents.</li> <li>• Displaying an extended status for agent groups.</li> </ul>
AgentStats (continued)	<p>Setting the DisableAgentCurrentState configuration option under the Workspace section, on <a href="#">page 38</a> to true will also enable this functionality, but will affect all CCPulse+ users logged into the same CCPulse+ application. Setting the AgentStats registry setting to RESTRICTED_STATS on individual computers, enables this functionality on an individual user basis.</p> <p>Default Value: Depends on the DisableAgentStatus configuration option. If DisableAgentStatus = true, the default value of AgentStats is RESTRICTED_STATS. If DisableAgentStatus = false, the default value of AgentStats is FULL_STATS.</p> <p>Valid Values: RESTRICTED_STATS, FULL_STATS</p> <p>Path: HKEY_LOCAL_MACHINE\SOFTWARE\GCTI\CallCenter\VIEW_STATS value AgentStats</p>
DeltaAvgTime	<p>Specifies the default value, in seconds, of the Insensitivity parameter for statistics in the Average Time category.</p> <p>Default Value: 2</p> <p>Valid Values: 2–600</p> <p>Path: HKEY_CURRENT_USER\Software\GCTI\CallCenter\CUSTOM_DEFINITION</p>

**Table 12: CCPulse+ Registry Settings (Continued)**

Registry Setting	Description
DeltaCntCalls	<p>Specifies the default value, in seconds, of the Insensitivity parameter for statistics in the Current Number category.</p> <p>Default Value: 1</p> <p>Appropriate Values: 1–100</p> <p>Path: HKEY_CURRENT_USER\Software\GCTI\CallCenter\CUSTOM DEFINITION</p>
DeltaTotalTime	<p>Specifies the default value, in seconds, of the Insensitivity parameter for statistics in the Total Time category.</p> <p>Default Value: 10</p> <p>Valid Values: 10–600</p> <p>Path: HKEY_CURRENT_USER\Software\GCTI\CallCenter\CUSTOM DEFINITION</p>
FormatAgentInfo	<p>Specifies how CCPulse+ displays agent information on the Call Center Objects pane of the CCPulse+ main window.</p> <p>Default Value: Varies, depending on the language that is detected by your operating system</p> <p>Valid Values: Strings that contain any combination of the following parameters:</p> <ul style="list-style-type: none"> <li>%n=Employee ID</li> <li>%F=First name</li> <li>%f=Abbreviated first name</li> <li>%L=Last name</li> <li>%l=Abbreviated last name</li> </ul> <p>For example, if you have an agent who is named Vince Duncan and whose employee number is 9001, the following string:</p> <p>FormatAgentInfo = %n-%f.%L</p> <p>yields the following display:</p> <p>9001 - V. Duncan</p> <p><b>Note:</b> Separate the parameters by using punctuation with which you want the elements to display.</p> <p>Path: HKEY_CURRENT_USER\Software\GCTI\CallCenter\CUSTOM DEFINITION</p>
GridSortingInterval	<p>Specifies how often, in seconds, CCPulse+ re-sorts the grid if it is set to sort in either ascending or descending order by column.</p> <p>Default Value: 60</p> <p>Valid Values: 5-600</p> <p>Path: HKEY_CURRENT_USER\Software\GCTI\CallCenter\PulseGridProperties\GridSortingInterval</p>

**Table 12: CCPulse+ Registry Settings (Continued)**

Registry Setting	Description
HistoricalUpdate Frequency	Specifies the default value, in seconds, of the Notification Frequency property for statistics in the ElapsedTimePercentage, RelativeTimePercentage, RelativeNumberPercentage, and TotalNumberInTimeRangePercentage categories.  Default Value: 60 Valid Values: 60–600 Path: HKEY_CURRENT_USER\Software\GCTI\CallCenter\CUSTOM DEFINITION
IntervalForCurrent Update	Specifies the default value, in seconds, of the Notification Frequency property for Current State and Current Number statistics.  Default Value: 2 Valid Values: 2–600 Path: HKEY_CURRENT_USER\Software\GCTI\CallCenter\CUSTOM DEFINITION
NotifyEvery	Specifies the default value, in seconds, of the Notification Frequency property for statistics.  Default Value: 60 Valid Values: 60–1800 Path: HKEY_CURRENT_USER\Software\GCTI\CallCenter\CUSTOM DEFINITION





# 3

## Historical Reporting Considerations for CCPulse+

This chapter discusses CCPulse+ historical reporting. It covers certain points to consider before you use CCPulse+ historical reporting functionality. Using this functionality is completely optional. If you intend to only use CCPulse+'s real-time functionality, you do not have to connect CCPulse+ to a Data Mart and you can skip this chapter. If you are interested in employing CCPulse+'s historical reporting functionality, read the following sections:

- [Data Mart Connections, page 49](#)
- [Composite Metrics, page 50](#)
- [Column Names, page 50](#)
- [The Last N Intervals Parameter, page 51](#)
- [Historical Associations for Statistics, page 51](#)
- [Propagation of Template Changes, page 51](#)

---

### Data Mart Connections

You must configure a Data Mart connection on the `Connections` tab of your CCPulse+ `Application` object. If CCPulse+ cannot connect to the Data Mart, it cannot perform any historical reporting. If you use the CCPulse+ Wizard to configure CCPulse+, you can specify a Data Mart application on the ETL Runtime window. Otherwise, you must update your CCPulse+ `Application` object manually.

CCPulse+ does not maintain a constant connection to Data Mart. Instead, it connects for each request made and then disconnects until the next request. This functionality saves Data Mart resources.

---

**Note:** For CCPulse+, you can use a Data Mart that has only one active Configuration Server defined to it. (*Active* indicates that Configuration Server has an ODS [Operational Data Storage] assigned to it within ETL Assistant.) If your Data Mart collects information from multiple Configuration Servers, you cannot use it with CCPulse+.

---

---

## Composite Metrics

Prior to release 7.0, you could not use CCPulse+ to supply composite metrics in reports—except for those metrics already provided by the ready-to-use reports. To correct this shortcoming, the 7.0 release introduced a custom-formula capability, allowing you to define averages, percentages, and more. Refer to the “Template Wizard” topic in *Reporting 8.1 CCPulse+ Help* for information on how to use this feature.

---

## Column Names

Data Mart stores information in folder templates that include only a single object (Agent, Place, Queue, and so on). However, in CCPulse+, you can create custom templates that include multiple compatible objects. To link object data stored in Data Mart, CCPulse+ identifies metrics by the Data Mart column name.

For this to function properly, the Data Mart folder template for each object to be incorporated into the CCPulse+ template must include the *identical* column name used in the CCPulse+ template. Otherwise, data from the Data Mart template is omitted from the CCPulse+ template.

---

**Warning!** If more than one custom template uses the same column name to specify different metrics, CCPulse+ might combine these metrics incorrectly.

---

For more information about the Data Mart folder templates and column names provided in reports from Genesys solutions, refer to the “Data Mart Folder Templates” and “Data Mart Composite Metrics” sections in Chapter 6 of the *Reporting Technical Reference Guide*.

---

## The Last N Intervals Parameter

CCPulse+ lets you select `Last N Intervals` as a time parameter for historical reporting. CCPulse+ searches for data in the `N * (aggregation)` intervals for the current time and then displays a maximum of `N Intervals`, depending on data availability.

For example, if you request data from the last three weeks, CCPulse+ searches for data in the previous three-week interval, and then returns a maximum of three records. However, if the data collection for that object or metric ceased several months ago, CCPulse+ returns a null response. This optimization methodology prevents resource-intensive searches for data that exists at some unspecified point in the past. Refer to the “CCPulse+ Performance” section of the *Reporting 7.5 Reference Manual* to learn about other parameters that affect both real-time and historical performance.

To retrieve such data, make a request for data from a specified set of dates.

---

## Historical Associations for Statistics

You cannot set historical associations for custom report layouts until you complete the following:

1. Create a layout template by using Data Modeling Assistant (DMA)
2. Assign a specific column name to it.
3. Create and activate a report layout based on the new layout template.

After the statistic has been propagated to Data Mart—which usually takes a few hours—you can make the historical association in CCPulse+.

---

**Note:** CCPulse+ reads all available Data Mart metrics at start-up only. In order for CCPulse+ to accept newly created or changed metrics, you must restart it.

---

---

## Propagation of Template Changes

Earlier releases of CCPulse+ did not propagate to existing historical views any changes that you made to the underlying CCPulse+ historical template. Starting with the 7.0.2 release, however, CCPulse+ does propagate such changes upon reload of your workspace. This behavior now parallels how CCPulse+ propagates changes made to real-time templates.



# 4

## Server Connections to CCPulse+

Defined within the CCPulse+ Application is connection information about the following servers:

- Stat Server, for monitoring real-time data
- DB Server, for gathering historical data that is stored in Data Mart (optional connection)

CCPulse+ maintains connections with Configuration Server to retrieve information about CCPulse+ application configuration and call center objects.

This chapter describes how CCPulse+ behaves when any of these server connections, or the connections to their designated backups, fails. This chapter also describes what actions you should take to regain full functionality under these circumstances.

---

**Note:** For information about the Genesys security feature, client-side port definition, which controls and secures the connections between CCPulse+ and these servers, see “Client-Side Port Definition” on [page 15](#).

---

The scenarios in this chapter begin with a CCPulse+ session that has all of its connections established. For any number of reasons, the connections might subsequently fail—and in any order—to affect normal CCPulse+ operation.

This chapter contains the following sections:

- [Configuration Server Connection Failure, page 54](#)
- [Stat Server Connection Failure, page 56](#)
- [DB Server Connection Failure, page 58](#)

---

## Configuration Server Connection Failure

CCPulse+ maintains two persistent connections to Configuration Server (or Configuration Server Proxy, if so configured) upon login. If one of these connections is dropped, the CCPulse+ status bar instantly changes from `CfgServer ONLine` to `CfgServer OFFLine`, but the CCPulse+ application continues to function. A broken Configuration Server connection means that CCPulse+ cannot receive updates about changes to the configuration of contact-center objects such as:

- Object additions or deletions (for example, the addition/deletion of DNs, agents, and queues) that CCPulse+ would otherwise monitor.
- Group composition changes (for example, additions/deletions to agent groups and place groups).

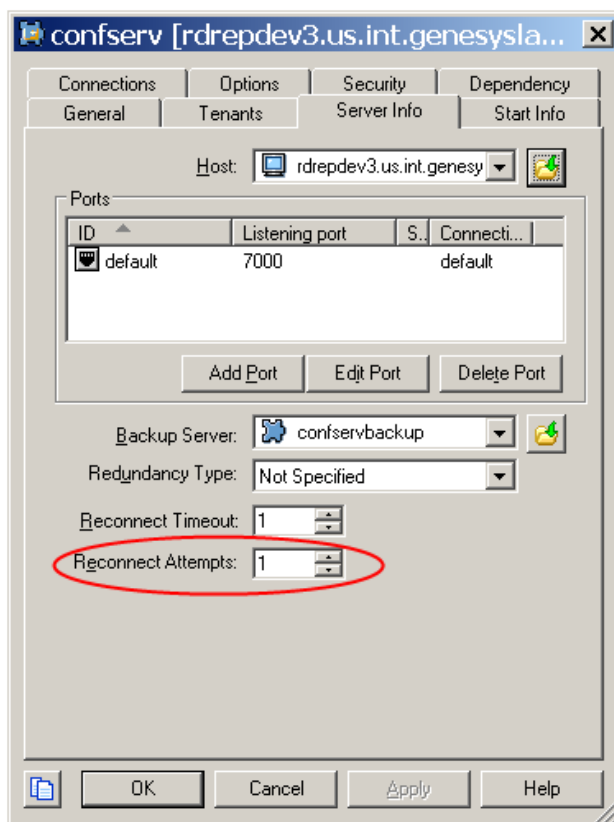
Furthermore, you cannot open an existing workspace or create a new one if CCPulse+ has no connection to Configuration Server.

With regard to changes that you make to the CCPulse+ `AppLication` object itself, CCPulse+ reads this information only upon startup; therefore, a Configuration Server disconnection after an initial successful connection affects CCPulse+'s ability to read its own configuration only upon the *next* startup.

In a failed Configuration Server connection, CCPulse+ silently executes its reconnection procedure.

1. CCPulse+ attempts to reconnect automatically to the current Configuration Server (primary) using the number of `Reconnect Attempts` configured for this application in Configuration Manager. The following message will appear in the status bar: `Reconnecting to CfgServer (attempt X of Y)`.

[Figure 7](#) shows the `Server Info` tab of a configuration Server application in Configuration Manager, where the number of `Reconnect Attempts` is configured.



**Figure 7: Number of Reconnection Attempts**

2. When number of attempts is reached without success, CCPulse+ attempts to switchover from primary to backup and back until the connection succeeds or you exit CCPulse+.
3. When the switchover happens, the status bar displays the attempt and the number of configured attempts for the server to which it switched and the number of re-connect attempts is reset.

Upon a successful connection to either the primary or backup Configuration Server, the CCPulse+ status bar reads as follows:

Primary/Backup CfgServer ONLine

4. If there is still an error connecting to both the primary and backup server, CCPulse+ displays an error message with the information about which server's last connection attempt failed—for example, the backup server.
5. When Configuration Server (or its backup, if specified) does get back online, you must close and then reopen your workspace in order for CCPulse+ to acknowledge Configuration Server status and for CCPulse+ to receive Configuration Server updates. CCPulse+ checks the status of its connection to Configuration Server every time that a workspace is opened.

CCPulse+'s connection to Configuration Server can fail for a number of reasons, including the following:

- Someone closes Configuration Server or kills its process.
- Network problems break CCPulse+'s connection to Configuration Server.

You can continue to use a previously opened and activated CCPulse+ workspace without a connection to Configuration Server; however, you cannot open or create a new workspace without this connection.

---

## Stat Server Connection Failure

CCPulse+ maintains a continuous connection to Stat Server when there is an active workspace open. When this connection fails, the CCPulse+ status bar instantly changes from Primary/Backup StatServer ONLINE to StatServer OFFLINE, but the CCPulse+ application continues to function. A broken Stat Server connection means that:

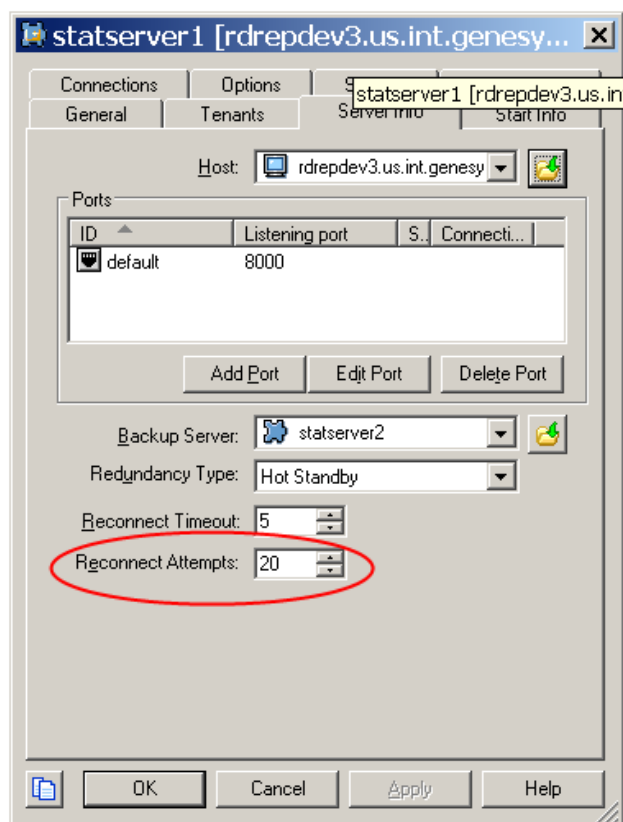
- CCPulse+ cannot send requests for real-time statistics to Stat Server.
- CCPulse+ cannot receive real-time statistical updates from Stat Server.
- CCPulse+ cannot read changes to virtual group composition (if the UseStatServerVirtualGroups configuration option is set to true).
- You cannot apply thresholds or actions to real-time statistics (but you can still apply these to historical statistics).
- You cannot open the Extended Current Status window for any object.
- You cannot retrieve capacity information for any object.

In a failed Stat Server connection, CCPulse+ next silently executes its reconnection procedure.

1. CCPulse+ attempts to reconnect automatically to the current Stat Server (primary) using the number of Reconnect Attempts configured for this application in Configuration Manager. The following message will appear in the status bar: Reconnecting to StatServer (attempt X of Y).

[Figure 8](#) shows the Server Info tab of a Stat Server application in Configuration Manager, where this parameter is configured.





**Figure 8: Number of Reconnection Attempts**

2. When number of attempts is reached without success, CCPulse+ attempts to switchover from primary to backup and back until the connection succeeds or you exit CCPulse+.
3. When the switchover happens, the status bar displays the attempt and the number of configured attempts for the server to which it switched and the number of re-connect attempts is reset.

Upon a successful connection to either the primary or backup Stat Server, the CCPulse+ status bar reads as follows:

Primary/Backup StatServer ONLine

4. If there is still an error connecting to both the primary and backup server, CCPulse+ displays an error message with the information about which server's last connection attempt failed—for example, the backup server.
5. When Stat Server (or its backup) does get back online, you must close and then reopen your workspace in order for CCPulse+ to acknowledge the connection and resume normal operation. CCPulse+ checks the status of its connection to Stat Server only when you open a workspace or upon execution of its reconnection procedure.

CCPulse+'s connection to Stat Server can fail for a number of reasons including the following:

- StatServer becomes overloaded.
- Someone closes Stat Server.
- Someone kills the Stat Server process.
- Network problems break CCPulse+'s connection to Stat Server.

You can continue to use a previously opened and activated CCPulse+ workspace without a connection to its Stat Server; although this mode of operation is not particularly useful. However, you cannot open or create a new workspace without this connection.

---

## DB Server Connection Failure

CCPulse+ does not maintain a continuous connection to the DB Server for Data Mart (through its database access point). Instead, CCPulse+ connects to this server (or its backup) on a request-by-request basis, such as when you refresh or create an historical view. When establishing an initial connection to a pair of primary and backup DB Servers, CCPulse+ tries to switch over to the backup server, if configured, without prompting you.

If initial connection fails after trying backup server CCPulse+ displays an error message with the information about which server's last connection attempt failed—for example, the backup server.

If this backup is not running or if one is not configured, CCPulse+ does not receive the historical information that is requested, and your historical view, for example, displays no data. Under these circumstances, you can continue to use CCPulse+ for reporting real-time data that is gathered directly from Stat Server, provided that this server is running.

As soon as DB Server is back online, you do not need to close or reopen the workspace to regain historical reporting. Merely re-request the historical information that you sought by reopening the related historical view.

CCPulse+'s automatic connection to a designated backup DB Server is a feature that was introduced in the 7.0.2 release.

# 5

## Using Custom Statistics

When you are creating or modifying templates, you can build custom statistics from the template's basic statistics by constructing your own formulas through the use of JScript. A basic statistic has assigned to it a Stat Server stat type definition. This chapter includes the following topics:

- [Identifying Custom Statistics, page 59](#)
- [Using JScript Language, page 60](#)
- [Referencing Basic Statistics, page 60](#)
- [Using Predefined Objects in Formulas, page 62](#)
- [Formatting the Results, page 68](#)

---

### Identifying Custom Statistics

In the CCPulse+ interface, you can distinguish basic statistics (which are predefined in CCPulse+ templates) from custom statistics, as well as if your statistics have been hidden, by the appearance of the icon that precedes the statistic name in the *Predefined Statistics* window of the *Templates Wizard*. Both basic and custom statistics can be hidden during template creation by using the *Templates Wizard*:



denotes a basic statistic.



denotes a custom statistic.



denotes a hidden basic statistic.



denotes a hidden custom statistic.

[Figure 9](#), for example, shows six basic statistics and five custom statistics, some of which are hidden, from a *Callback Queue* template in a cutaway of the *Predefined Statistics* window.

## Hidden Statistics

CCPulse+ release 8.0.1 and higher introduces functionality that allows you to hide both basic and custom statistics by using the Templates Wizard. Hidden statistics are identified by the appearance of the hidden icon that precedes the statistic name (see [page 59](#)). These hidden icons, along with basic and custom statistic icons, are displayed in the Predefined Statistics window of the Templates Wizard (see [Figure 9](#)). There are three options from which to choose when you are hiding statistics:

- **Hide in All Views**—Hides the custom statistic in any type of view (tree, table, or graph) for CCPulse+ users, and locks the statistic for CCPulse+ administrators. The main purpose of these statistics is to receive data that can be viewed and used in formulas.
- **Hide in Table View**—Hides the custom statistic in table view. The corresponding statistic is hidden, but it can be shown at any time in table view.
- **Hide in Graph View**—Hides the custom statistic in graph view, but it will still be visible in other views.

Administrators can use the “Hide in Graph View” option to increase the performance of CCPulse+ views by hiding insignificant statistics in graph views. For detailed information about how to hide custom or basic statistics, refer to the *Reporting 8.1 CCPulse+ Help*.

---

## Using JScript Language

CCPulse+ supports the JScript language for the custom statistics you define. As a result, you can use the arithmetic operators and delimiters available in this language, including: + / \* - . ? : == ( ) ; != +=

Refer to your JScript documentation for a description of these operators and syntax guidelines.

---

## Referencing Basic Statistics

CCPulse+ uses the following syntax for referencing basic statistics in formulas:

```
ccpulse.group("StatisticGroupName").statistic("StatisticName");
```

The trailing semicolon is optional. CCPulse+ includes the name of the statistic group to distinguish the statistic, in case another statistic of the same name exists in another statistical group. If either `StatisticGroupName` or

StatisticName contains no spaces, CCPulse+ drops the corresponding group and statistic delimiters, the parentheses, and the double quotes:

```
ccpulse.StatisticGroupName.StatisticName
```

**Example 1** demonstrates the definition of the All Entered custom statistic, which is provided in the Callback Queue template.

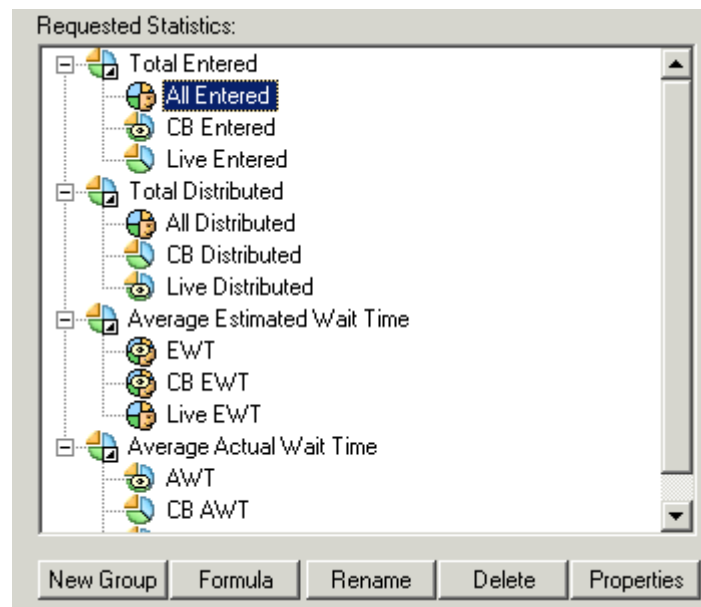
### Example 1

The Callback Queue template (which is provided with the Voice Callback [VCB] option) makes use of several custom statistics. [Figure 9](#) shows a cutaway of CCPulse+'s Predefined Statistics window and many of this template's statistics. The Requested Statistics list in this window contains the template's categorization of statistic groups and statistics, and it highlights one custom statistic in particular, All Entered, which belongs to the Total Entered statistic group.

---

**Note:** [Figure 9](#) contains hidden statistics (CB Entered, Live Distributed, EWT, CB EWT, and AWT). For more information about hidden statistics, see [page 60](#).

---



**Figure 9: The Predefined Statistics Window**

When you open the properties of the All Entered statistic, CCPulse+ opens the ActiveX Scripting Expression dialog box and displays the statistic's formula. [Figure 10](#) on [page 62](#) provides a cutaway of the ActiveX Scripting Expression dialog box, which shows that the definition of All Entered is based on two basic statistics, CB Entered and Live Entered, both of which belong to the Total Entered group.

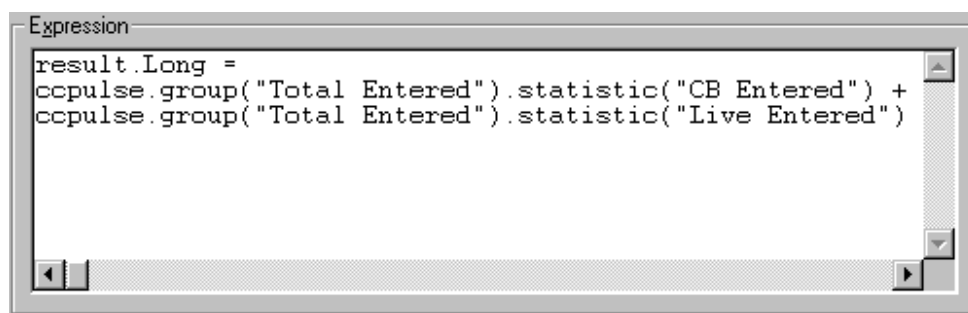


Figure 10: Definition of the All Entered Custom Statistic

## Using Predefined Objects in Formulas

In the calculation of custom statistics, you can use qualitative information about a statistic other than its value by applying the state, dn, and/or Action predefined objects within the formula. Example 4 on [page 66](#) provides an expansive example that uses the state predefined object in a formula.

### Status-Related Information

To obtain information about the current status of a statistic in a formula, use the state predefined object and its properties (see [Tables 13](#) and [14](#)). To activate this functionality, be sure to set the `ExtendedCurrentStatus` configuration option to `True` and to define the statistic's underlying stat type appropriately. The description of the option on [page 17](#) provides these details.

Table 13: Properties of the state Object for AgentState

Property	Type	Description
type	String	Type of state object. In the 7.5.x release, extended current status information is provided only for Agent and Agent Group objects. Genesys recommends that you validate an object's type property as AgentState before using other properties of this object.  If the state object is not available, the value of the type property is undefined. In this case, all other properties of the state object will be unavailable, which may result in errors.
StartTime	OLE Date	Coordinated Universal Time (UTC) date and time when the current status was established. Suitable for use in the Date object that is available in the JScript.
Status	String	Current status name, as provided by Stat Server.
AgentID	String	EmployeeID, usually set within Configuration Server.
PlaceID	String	ID of the place where the agent is logged in.
LoginID	String	Login ID used by the agent.

**Table 13: Properties of the state Object for AgentState (Continued)**

Property	Type	Description
DNs	Collection	Contains information about the DNs used by or available to the agent. The list can be iterated by using <code>Enumerator</code> object (available in Jscript) to obtain specific DN data. Refer to the <code>GetDNState</code> function in Example 2 for an example on how to use this property. The list can also be accessed using the <code>Count</code> property and the <code>Value</code> function.
Capacities	Collection	Contains the collection of capacity items for an agent. Each capacity item contains the following properties: <code>MediaType</code> , <code>CurrentInteractions</code> , <code>RoutableInteractions</code> , and <code>MaxInteractions</code> (see <a href="#">Table 15</a> ).  To return this collection of capacity items, set the <code>EnableAgentCapacity [Workspace]</code> configuration option to true.

**Table 14: Properties of the state Object for AgentGroupState**

Property	Type	Description
type	String	Type of state object. In the 7.5.x release, extended current status information is provided only for <code>Agent</code> and <code>Agent Group</code> objects. Genesys recommends that you validate an object's type property as <code>AgentGroupState</code> before using other properties of this object.  If the state object is not available, the value of the type property is <code>undefined</code> . In this case, all other properties of the state object will be unavailable, which may result in errors.
StartTime	OLE Date	UTC date and time when the current status was established. Suitable for use in the <code>Date</code> object that is available in the JScript.
AgentGroupID	String	Name of the agent group.
Capacities	Collection	Contains the collection of capacity items for an agent group. Each capacity item contains the following properties: <code>MediaType</code> , <code>CurrentInteractions</code> , <code>RoutableInteractions</code> , and <code>MaxInteractions</code> (see <a href="#">Table 15</a> ).  To return this collection of capacity items, set the <code>EnableAgentGroupCapacity [Workspace]</code> configuration option to true.

[Table 15](#) provides a description of the properties of the Capacities items.

**Table 15: Properties of the Capacity Items**

Property	Type	Description
MediaType	String	The name of the media.
CurrentInteractions	Integer	The number of current interactions.
RoutableInteractions	Integer	The number of available routable interactions.
MaxInteractions	Integer	The maximum number of interactions.

The formula script can count the Capacities collection by using either the enumerator or the index (for example, by using `.value(index)` method). The number of capacity items are available through the `.Count` property. Certain capacity items for specific media are also available by using `.value("media_name")`; for example, `var voice_capacity = state.Capacities.Values("voice")`. Refer to [Example 2](#) and [Example 3](#).

### Example 2

The following is an example of the formula script for Agents:

```
if(state.type == "AgentState")
{
    var i, item, s = "";
    for(i = 0; i < state.Capacities.Count; i++)
    {
        item = state.Capacities.Value(i);
        s += item.MediaType;
        s += "(" + item.CurrentInteractions + "," +
item.MaxInteractions + "," + item.RoutableInteractions + "),"";
    }
    result.Text = s;
}
else
    result.Text = "n\\a";
```

### Example 3

The following is an example of the formula script for Agent Groups:

```
if(state.type == "AgentGroupState")
{
    var i, item, s = "";
    for(i = 0; i < state.Capacities.Count; i++)
    {
        item = state.Capacities.Value(i);
```



```

        s += item.MediaType;
        s += "(" + item.CurrentInteractions + "," +
item.MaxInteractions + "," + item.RoutableInteractions + ")", ";
    }
    result.Text = s;
}
else
    result.Text = "n\\a";

```

---

**Note:** In the CCPulse+ workspace, the Graph view displays only one number —current capacity per media.

---

#### DN-Related Information

To obtain DN-related information in a formula, use the DN predefined object with its properties listed in [Table 16](#). This object can only be used in conjunction with the state predefined object.

**Table 16: Properties of the DN Object**

Property	Type	Description
type	String	This string contains the value DNState.
DNType	String	The directory number's type, such as Position, Extension, or Chat.
DN	String	The directory number.
StartTime	Long	Greenwich Mean Time (GMT) date and time when current status has been established. Suitable for use in the Date object available in the JScript.
Status	String	Current status name of the directory number as provided by Stat Server.
SwitchID	String	The switch's identification number, as registered in Configuration Server, to which the DN belongs.
Actions	Collection	Contains information about the list of actions currently occurring at a DN. DNs can hold several simultaneous actions. The list can be iterated by using Enumerator object (available in Jscript) to obtain specific agent data. Refer to the GetAction function in <a href="#">Example 4</a> for an example showing how to use this property.

#### Action-Related Information

To obtain action-related information use the Action predefined object and its properties described in the [Table 17](#). This object can only be used in conjunction with DN predefined object. Please note that the names of masks can coincide with the names of statuses.

**Table 17: Properties of the Action Object**

Property	Type	Description
type	String	This string contains the value Action.
Action	String	Name of the action, such as those listed on <a href="#">page 76</a> without the SDNA, SRPA, or SCMPA prefixes.
StartTime	Long	GMT date and time when this action has been established. Suitable for use in the Date object available in the JScript.

**Example 4**

The following example illustrates how you can use the state predefined object within a customized statistic's formula to determine an agent's current state:

```
result.Text = GetAgentState();
function GetAgentState()
{
    if(state.type != "AgentState")
        return "n/a";
    var r = "(" + FormatDate(state.StartTime) + ") ";
    r += state.AgentID;
    r += " [Place: " + state.PlaceID;
    r += " Login: " + state.LoginID + "];";
    r += ", Status: " + state.Status;
    r += "; DNS: ";

    for(var e = new Enumerator(state.DNs); !e.atEnd();
e.moveToNext())
    { r += GetDNState(e.item()); }
    return r;
}

function FormatDate(dateVal)
{
    var dateObj = new Date(dateVal);
    return dateObj.getHours() + ":" + dateObj.getMinutes() + ":"
        + dateObj.getSeconds();
}

function GetDNState(dn)
{
    var r = "(" + FormatDate(dn.StartTime) + ") ";
    r += dn.DN;
    r += " [Switch: " + dn.SwitchID;
    r += ", Type: " + dn.DNType + "], Status: " + dn.Status;
```

```

    r += "; Actions: "

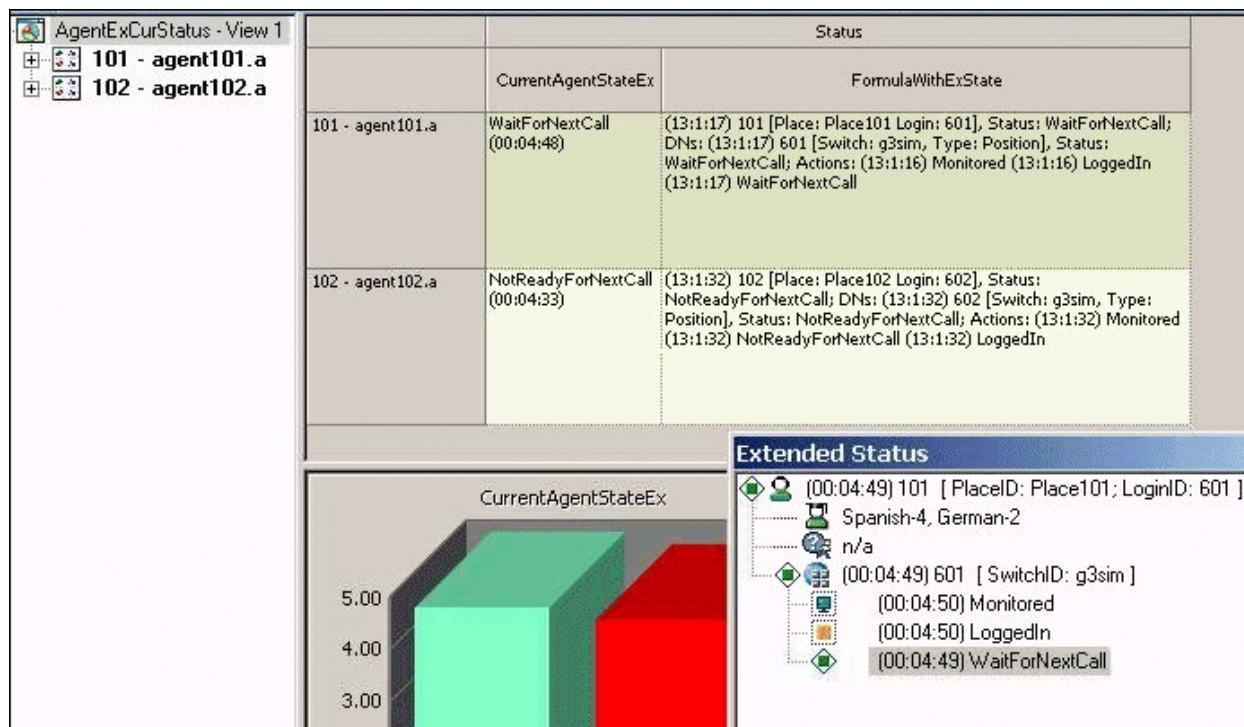
    for(var e = new Enumerator(dn.Actions); !e.atEnd();
    e.moveNext())
    {
        r += GetAction(e.item()) + " ";
    }
    return r;
}

function GetAction(a)
{
    var r = "(" + FormatDate(a.StartTime) + ") ";
    r += a.Action;
    return r;
}

```

The information that CCPulse+ returns is the same information that appears in the Extended Current Status window when requested for Agent objects.

[Figure 11](#) illustrates sample data returned in the [Example 4](#) script. Note that the time information returned from running the script reflects startup time (the time that the current status occurred)—not duration as shown in the Extended Current Status window.



**Figure 11: Example 4 Results.**

## Formatting the Results

CCPulse+ enables you to specify the meaning of the result CCPulse+ returns for custom statistics:

- `result.Duration = formula`  
Displays the returned result in hh:mm:ss format.
- `result.Long = formula`  
Displays the returned result in integer format.
- `result.Float = formula`  
Displays the returned result in floating-point format.
- `result.Text = formula`  
Displays the returned result in string format.

If you omit the `result` object from the formula, CCPulse+ might not return the result as you expect it. For example, if you try to calculate duration based on a set of time statistics that you create, and if you do not use `result.duration` in your formula, CCPulse+ might return a Long value and not apply the hh:ss:mm or other time format.

Figure 10 on [page 62](#) illustrates the use of `result.Long` in the definition of the All Entered statistic.

## Displaying Capacity Information

CCPulse+ provides two options for formatting the [Capacities](#) collection of statistics in the table and graph views. You can:

- Enter a user-defined format string (see [Table 18](#)).
- Select a predefined format (see [Table 19](#)).

To choose either option, from the `Statistic` dialog window in the CCPulse+ Template Wizard:

- Select the media for which CCPulse+ will display the capacity information.

---

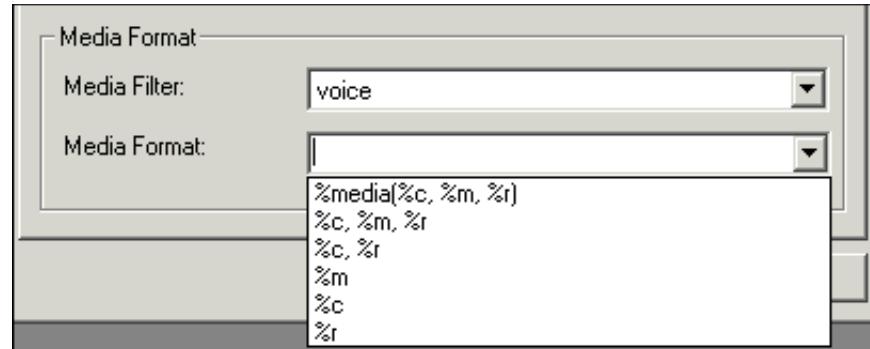
**Note:** The list of available media is populated by the values set for the `MediaTypes` configuration option. See [Chapter 2](#) for more information on this option.

---

- Select the media format from the drop-down menu, or enter a user-defined format.

Figure 12 shows the predefined formats in a cutaway of the `Statistic` dialog box.

**Note:** Capacity information is available in the `CurrentAgentTargetState` or `CurrentAgentGroupTargetState` statistic (`CurrentTargetState` statistical category).



**Figure 12: Cutaway of the Statistic Dialog Box**

Table 18 lists the placeholder values for which you can substitute a user-defined string. Note that you must preface the strings entered with a `%` sign.

**Table 18: User-Defined Format Strings for Capacity Information**

Placeholder	Type	Description
<code>%media</code>	String	Displays the name of the media in a single cell.
<code>%m</code>	Single integer	Displays the maximum interactions in a single cell.
<code>%c</code>	Single integer	Displays the current interactions in a single cell.
<code>%r</code>	Single integer	Displays routable interactions in a single cell.

Table 19 on [page 70](#) lists the predefined formats you can select from a drop-down menu of format choices.

**Table 19: Predefined Formats for Capacity Information**

Format	Example	Description
%media(%c, %m, %r)	voice(0, 3, 3)	Displays media name, current interactions, maximum interactions, and routable interactions in a single cell. This is the default format.
%c, %m, %r	0, 3, 3	Displays current interactions, maximum interactions, and routable interactions in a single cell delimited by commas.
%c, %r	0, 3	Displays current and routable interactions in a single cell delimited by commas.
%c	0	Displays the current interactions.
%r	3	Displays the routable interactions.
%m	3	Displays the maximum interactions.

# 6

## Thresholds and Actions

By linking thresholds and actions, you can configure CCPulse+ so that it performs a specific action whenever the criteria that you set in a threshold definition are met. This chapter contains the following sections:

- [Overview, page 71](#)
- [Predefined Objects, page 72](#)
- [Predefined Thresholds, page 77](#)
- [Predefined Actions, page 84](#)

---

### Overview

This chapter presents the predefined:

- Objects that you can use in the threshold and action VBScripts to create and edit thresholds and actions.
- Thresholds that are installed with CCPulse+.
- Actions that are installed with CCPulse+.

All existing thresholds and actions that are applied to the root level of a view are propagated automatically to any new objects that are added to the view. You do *not* have to apply thresholds manually to statistics of newly added objects.

You can add a customized threshold to a statistic of a specific contact-center object, even if there is a pre-existing threshold applied at the root level. In this case, the customized threshold will take precedence. Any changes to the root-level threshold will not affect a statistic with a customized threshold. A new icon will designate the associated customized threshold.

For instructions on using the Threshold Wizard and Action Wizard to create and edit thresholds and actions, and for information on associating thresholds and actions for specific contact-center objects, see the *Reporting 7.5 CCPulse+ Help*.

## Predefined Objects

Use the predefined objects listed and described in [Table 20](#) to modify the predefined CCPulse+ thresholds and actions or to create new ones using the CCPulse+ Threshold and/or Action wizards.

**Table 20: Predefined Objects for Use in Threshold and Action Scripts**

Object	Type	Description
<b>Threshold</b> Use this object to set and retrieve the data used in threshold calculation, which is available in both threshold and action scripts.		
Result	Boolean	Contains the result of the execution of a threshold script. If the result is not set in the script, it is assumed to be <code>False</code> . Example: <code>Threshold.Result = True</code>
StatValue	Variant	Contains the current value of the statistic to which the threshold script is applied. Example: <code>If (Threshold.StatValue = x) then ...</code>
StatAlias	String	Alias of the statistic, as defined in the template. <b>Note:</b> The alias is an empty string if a threshold is applied to a configuration object in the main tree.
ActionDelay	Integer	Used to delay action execution by <i>n</i> seconds. If the threshold script that set this value is executed again before its actions are completed, and the result is <code>False</code> , action execution is canceled. This allows for so-called duration thresholds, the actions of which are executed if a certain condition is <code>True</code> for the amount of time specified. Example scenario: The value of a statistic changes. CCPulse+ executes the <code>Threshold1</code> script, which contains an action delay of 10 seconds. The script returns a <code>True</code> value. You can expect CCPulse+ to execute the associated actions 10 seconds later. <ul style="list-style-type: none"> <li>• If the value of the same statistic changes 5 seconds later, CCPulse+ re-executes the <code>Threshold1</code> script. If the script returns <code>False</code>, CCPulse+ cancels execution of the delayed actions.</li> <li>• If there is no statistic changes before the 10 seconds elapse, CCPulse+ executes the actions, thereby showing that a particular condition was <code>True</code> for the duration of 10 seconds.</li> </ul> Example: <code>Threshold.ActionDelay = 10</code>



**Table 20: Predefined Objects for Use in Threshold and Action Scripts (Continued)**

Object	Type	Description
ActionDelay (continued)		<p><b>Note:</b> ActionDelay functionality is based on the duration of Current Status only—not Current Status and Reason together, unless status and reason are coupled together at the moment of an actual change in Current Status.</p> <p>To obtain the correct time duration when Current Status and Reason are coupled together, you can configure your statistic to use the CurrentTime statistical category with a specific status mask that is filtered by a specific reason.</p>
StatReasons	String	<p>Use this read-only property to evaluate reasons in threshold and action scripts.</p> <p>The following threshold script illustrates how you can use this property when it is applied to an agent CurrentState statistic:</p> <pre>If (Threshold.StatValue = StatAction.SDANotReadyForNextCall     and Threshold.StatReasons = "Lunch") then     Threshold.Result = True end if</pre> <p>Note that reasons and action codes can appear only for following agent states:</p> <ul style="list-style-type: none"> <li>• LoggedIn</li> <li>• NotReadyForNextCall</li> <li>• AfterCallWork</li> <li>• WaitForNextCall</li> </ul> <p>Reasons can originate from more than one source (T-Server, hardware, or other), and they can be provided to CCPulse+, via Stat Server, in string or integer format. CCPulse+ converts all reasons to string format, separating each with a semicolon (;). To effectively evaluate the concatenated string, the CCPulse+ Administrator might have to parse it using VBScript.</p>
<b>Configuration Object Properties</b> These represent the primary properties of any configuration object (also available in action scripts).		
CFGTenantDbid	Long	tenant dbid Example: Threshold.CFGTenantDbid
CFGDbid	Long	object dbid Example: Threshold.CFGDbid
CFGObjectID	String	object ID Example: Threshold.CFGObjectID

**Table 20: Predefined Objects for Use in Threshold and Action Scripts (Continued)**

Object	Type	Description
<i>CFGType</i>	Integer	<p>Type of object (short <code>CfgObjectType</code> enumeration value, for instance, value 4 means <code>CFGPlace</code>).</p> <p>The enumeration values for the available object types are as follows:</p> <ul style="list-style-type: none"> <li>Switch—1</li> <li>DN—2</li> <li>Person—3</li> <li>Place—4</li> <li>AgentGroup—5</li> <li>PlaceGroup—6</li> <li>Tenant—7</li> <li>Script—12</li> <li>DNGroup—17</li> <li>CallingList—26</li> <li>Campaign—27</li> </ul> <p>Example: <code>Threshold.CFGDNGroup</code></p> <p>CCPulse+ support for the <code>CFGScript</code> predefined object was introduced in the 7.0.1 release.</p>
<b>CCPulseNotifier</b> Use this object to send notifications to CCPulse+ (also available in action scripts).		
SetColor	Color: Integer	<p>Notifies CCPulse+ of a color change. A member of the <code>Color</code> object can be passed as a parameter.</p> <p>Example: <code>CCPulseNotifier.SetColor(Color.Red)</code>.</p> <p>Or a user-defined RGB value can be passed instead.</p> <p>Example: <code>CCPulseNotifier.SetColor(RGB(50, 50, 50))</code>.</p> <p>For further information about the RGB function, consult your Visual Basic Script (VBScript) documentation.</p> <p><b>Note:</b> You must set color commands for color names using the English language.</p>
ResetColor	N/A	<p>Notifies CCPulse+ that the color of the object (set by <code>SetColor</code>) should be reset to its original color.</p> <p>Example: <code>CCPulseNotifier.ResetColor</code></p>
Hide	N/A	Use this operation to hide a configuration object in the <code>Call Center Objects</code> pane or <code>Tree</code> view, depending on the threshold application.
Show	N/A	Use this operation to show a configuration object on the <code>Call Center Objects</code> pane, the <code>Tree</code> view, and the <code>Graph</code> view. Used to display an object that was previously hidden using the <code>Hide</code> action associated with a different threshold.

**Table 20: Predefined Objects for Use in Threshold and Action Scripts (Continued)**

Object	Type	Description
<b>Color</b>		
(Enumeration Object) The properties of this object are constant RGB values that you can use with the SetColor and ResetColor methods (also available in action scripts). Some commonly used color codes are listed below.		
Examples:		
CCPulseNotifier.SetColor(Color.Red) or CCPulseNotifier.SetColor(RGB(255, 0, 0))		
The following commands (and their corresponding RGB values) are available with the Color object:		
Red	RGB (255,0,0)	
Blue	RGB (0,0,255)	
Green	RGB (0,255,0)	
DarkRed	RGB (128,0,0)	
DarkGreen	RGB (0,128,0)	
Cyan	RGB (0,255,255)	
DarkCyan	RGB (0,128,128)	
Magenta	RGB (255,0,255)	
DarkMagenta	RGB (128,0,128)	
Yellow	RGB (255,255,0)	
White	RGB (255,255,255)	
Black	RGB (0,0,0)	
Gray	RGB (192,192,192)	
DarkGray	RGB (128,128,128)	
<b>Note:</b> You must set color commands for color names using the English language.		

**Table 20: Predefined Objects for Use in Threshold and Action Scripts (Continued)**

Object	Type	Description
<b>StatAction</b> (Enumeration Object) The properties of this object are the names of the DNs, route points, and campaign actions as described in the statistics library (available only in threshold scripts). Example: <code>if ( Threshold.StatValue = StatAction.SDNALoggedIn ) then ...</code>		
<b>Current Status Name</b>	<b>Current State Value</b>	
SDNAWaitForNextCall	4	Each Current Status has an associated Current State value which is constant.
SDNACallDialing	6	
SDNACallRinging	7	The prefixes in the listing to the left mean the following:
SDNANotReadyForNextCall	8	
SDNACallUnknown	18	<i>DNA</i> —Directory Number Action
SDNACallConsult	19	<i>RPA</i> —Routing Point Action
SDNACallInternal	20	<i>CMPA</i> —Campaign Action
SDNACallOutbound	21	The <i>S</i> prefix on each indicates that the item is a Stat Server entity (rather than an entity of Configuration Server or any other server).
SDNACallInbound	22	
SDNALoggedOut	23	Elsewhere within the CCPulse+ interface, these actions appear without these prefixes.
SDNACallOnHold	13	
SDNANotMonitored	0	Example: <code>if</code> <code>(Threshold.StatValue=StatAction.</code> <code>SDNANotMonitored) then ...</code>
SDNAMonitored	1	
SDNALoggedIn	2	<code>Threshold.Result=True</code> <code>end if</code>
SDNAOnHook	3	
SDNAOffHook	5	CCPulse+ executes the corresponding action script when the selected DN statistic achieves
SDNAAfterCallWork	9	
SRPANotMonitored	0	NotMonitored status.
SRPAMonitored	1	
SRPANotReadyForNextCall	2	<b>Note:</b> <i>ASM</i> is a reference to the Active Switching Matrix call model used in conjunction with predictive dialing in the Outbound Contact solution. Refer to Genesys Outbound Contact documentation for further details.
SDNAASM_Engaged	16	
SDNAASM_Outbound	17	
SRPAWaitForNextCall	13	
SRPACallWait	9	
SCMPAStatusDeactivated	0	
SCMPAStatusActivated	1	
SCMPAStatusRunning	2	

## Predefined Thresholds

This section describes the following threshold scripts which are provided with each Genesys solution:

- AgentLoggedIn
- AgentLoggedOut
- CampaignActivated
- CampaignDeactivated
- ExactValue
- ExactValueWDuration
- GreaterThanLimit
- GreaterThanLimitWDuration
- LessThanLimit
- LessThanLimitWDuration
- LessThanSpecifiedLimit
- NotEqual
- NotEqualWDuration
- NotReadyForNextCall
- OutOfRange
- OutOfRangeWDuration
- WithinRange
- WithinRangeOfValues
- WithinRangeWDuration

The purpose of providing these scripts is to demonstrate how you might apply thresholds within your own CCPulse+ environment.

The scripts and threshold definitions are identical for each Genesys solution and are stored in a file that is named `thresholds.stg`.

---

**Note:** Because these are sample scripts, it is likely that their absolute values have little significance within your environment. You are encouraged to modify them to more meaningful values.

---

## How to Use Thresholds

The following discussion assumes that you are familiar with the VBScript programming language and with the CCPulse+ predefined objects that are described in “Predefined Objects” on [page 72](#).

To be effective, you must use thresholds in conjunction with actions. When using thresholds and actions, keep in mind the following points:

- CCPulse+ executes associated actions only if the threshold returns a `True` result.

This means that you cannot create a threshold to perform one action if its result is `True` and another action if its result is `False`.

- With CCPulse+, you can apply more than one threshold to a statistic.  
You can have one threshold call the first action, the second threshold call the second action, and so on.
- You can apply one or more actions to a particular threshold.
- You can apply a chain of thresholds to a particular statistic.

CCPulse+ performs the following actions when a statistic value changes:

- a. CCPulse+ calculates all appropriate thresholds.
- b. CCPulse+ checks if any thresholds for the previous statistic value result in a `false` value, in which case CCPulse+ cancels the respective actions.
- c. CCPulse+ checks if any thresholds for the changed statistic value result in a `true` value, in which case CCPulse+ executes all the expected actions.

If there are overlapping conditions (that is, more than one condition is true), then they are all evaluated and their actions are executed. To ensure that only one action gets triggered, create thresholds without overlapping conditions.

- You can also use object linking and embedding (OLE) automation objects within threshold scripts, because VBScript allows this.

---

**Note:** It is *not* recommended to use OLE objects with either a GUI-like appearance or with dialog boxes that require explicit user confirmation.

---

And, starting with release 7.2, you can configure the `SafeScriptingMode` option to specify whether CCPulse+ spawns a separate thread to execute VBScripts. Refer to “`SafeScriptingMode`” on [page 41](#) for more information about this option.

## Real-World Example

Consider the following business scenario, which uses thresholds and actions to aid a CCPulse+ operator in managing a queue named `ClientQueue`.

Management has decided that 5 calls or fewer waiting in `ClientQueue` is the desired situation; 10 or more calls waiting represents an alarming condition; and anywhere in between is acceptable.

Three custom thresholds, `UnderCapacity`, `AtCapacity`, and `OverCapacity`, have been applied to the `CallsWaiting` statistic, which is a statistic that is monitored for `ClientQueue`. The custom thresholds are defined as follows:

### UnderCapacity

```
if Threshold.StatValue < 5 then
    Threshold.Result = true
end if
```

### AtCapacity

```
if Threshold.StatValue >= 5 and Threshold.StatValue < 10 then
    Threshold.Result = true
```

```
end if
```

### OverCapacity

```
if Threshold.StatValue >= 10 then
    Threshold.Result = true
end if
```

A color action is assigned to each threshold to change the background color of a table cell holding the `CallsWaiting` statistic when CCPulse+ evaluates the threshold to be `True`. The `UnderCapacity` threshold triggers the `SetGreen` action. `AtCapacity` triggers the `SetYellow` action, and `OverCapacity` triggers the `SetRed` action.

Now CCPulse+ users have a visual cue to quickly assess `ClientQueue` performance.

## Explanations of the Predefined Thresholds

For each predefined threshold, this section gives the VBScript and the object types to which you can apply it.

---

**Note:** Some of these scripts include numbers by default. These numbers are intended simply to indicate where to insert a value in the script. You must replace these numbers with ones suited to your environment.

---

### AgentLoggedIn

This threshold script returns a `True` value when the agent is logged in—that is, when CCPulse+ receives the `Logged In` status from Stat Server.

```
if Threshold.StatValue = StatAction.SDNALoggedIn then
    Threshold.Result = true
end if
```

Used with the `Agent` object.

---

**Note:** Stat Server reports to its clients the highest ranking status of an object. After an agent logs in, his/her status almost immediately changes from `Logged In` to `Ready` or `Not Ready`, which holds a higher ranking. Hence, the threshold script above is rarely tripped even though an agent may be logged in for quite some time. For this reason, Genesys recommends that you revise your script to reflect the condition when agents have not logged out:

```
if Threshold.StatValue <> StatAction.SDNALoggedOut then
    Threshold.Result = true
end if
```

---

**AgentLoggedOut**

The threshold returns a `True` value when the agent is logged out.

```
if Threshold.StatValue = StatAction.SDNALoggedOut then
    Threshold.Result = true
end if
```

Used with the Agent object.

Using the `Hide` action with this threshold removes the logged out agent from the Table view as well as the Tree view.

---

**Note:** This functionality does not apply to the Graph view.

---

**CampaignActivated**

This threshold script returns a `True` value when the Campaign object has been activated.

```
if Threshold.StatValue = StatAction.SCMPAStatusActivated then
    Threshold.Result = true
end if
```

Used with the Campaign object.

**CampaignDeactivated**

This threshold script returns a `True` value when the Campaign object has been deactivated.

```
if Threshold.StatValue = StatAction.SCMPAStatusDeactivated then
    Threshold.Result = true
end if
```

Used with the Campaign object.

**ExactValue**

This threshold script returns a `True` value if the value of the statistic to which the threshold is applied equals the value you set. By default, the value is set to 3.

```
if Threshold.StatValue = 3 then
    Threshold.Result = true
else
    Threshold.Result = false
end if
```

**ExactValueWDuration**

This threshold script returns a `True` value if the value of the statistic to which the threshold is applied equals the value you set. By default, this value is set to



3. If `True`, `CCPulse+` executes the associated action a specified number of seconds later. By default, `ActionDelay` is set to 10.

```
if Threshold.StatValue = 3 then
    Threshold.ActionDelay = 10
    Threshold.Result = true
else
    Threshold.Result = false
end if
```

### **GreaterThanLimit**

This threshold script returns a `True` value if the value of the statistic to which the threshold is applied is greater than the value you set. By default, this value is set to 10.

```
if ( Threshold.StatValue > 10) then
    Threshold.Result = True
else
    Threshold.Result = False
end if
```

### **GreaterThanLimitWDuration**

This threshold script returns a `True` value if the value of the statistic to which the threshold is applied is greater than the value you set. By default, this value is set to 10. If `True`, `CCPulse+` executes the associated action a specified number of seconds later. By default, `ActionDelay` is set to 10.

```
if Threshold.StatValue > 10 then
    Threshold.ActionDelay = 10
    Threshold.Result = True
else
    Threshold.Result = False
end if
```

### **LessThanSpecifiedLimit**

This threshold script returns a `True` value if the value of the statistic to which the threshold is applied is less than the value you set. By default, this value is set to 777.

```
if (Threshold.StatValue < 777) then
    Threshold.Result = True
else
    Threshold.Result = False
end if
```

Used with the `Calling List` object.

**LessThanLimit**

This threshold script returns a `True` value if the value of the statistic to which the threshold is applied is less than the value you set. By default, this value is set to 10.

```
if ( Threshold.StatValue < 10 ) then
    Threshold.Result = True
else
    Threshold.Result = False
end if
```

**LessThanLimitWDuration**

This threshold script returns a `True` value if the value of the statistic to which the threshold is applied is less than the value you set. By default, this value is set to 10. If `True`, CCPulse+ executes the associated action a specified number of seconds later. By default, `ActionDelay` is set to 10.

```
if Threshold.StatValue < 10 then
    Threshold.ActionDelay = 10
    Threshold.Result = True
else
    Threshold.Result = False
end if
```

**NotEqual**

This threshold script returns a `True` value if the value of the statistic to which the threshold is applied equals any nonnull value other than the value you set. By default, this value is set to 3.

```
if Threshold.StatValue <> 3 then
    Threshold.Result = true
else
    Threshold.Result = false
end if
```

**NotEqualWDuration**

This threshold script returns a `True` value if the value of the statistic to which the threshold is applied equals any nonnull value other than the value you set. By default, this value is set to 3. If `True`, CCPulse+ executes the associated action a specified number of seconds later. By default, `ActionDelay` is set to 10.

```
if Threshold.StatValue <> 3 then
    Threshold.ActionDelay = 10
    Threshold.Result = true
else
    Threshold.Result = false
end if
```

```
end if
```

### OutOfRange

This threshold script returns a `True` value if the value of the statistic to which the threshold is applied lies outside the range of values between the values you set. By default, these values are set to 5 and 10.

```
if Threshold.StatValue < 5 Or Threshold.StatValue > 10 then
    Threshold.Result = true
else
    Threshold.Result = false
end if
```

### OutOfRangeWDuration

This threshold script returns a `True` value if the value of the statistic to which the threshold is applied lies outside the range of values between the values you set. By default, these values are set to 5 and 10. If `True`, CCPulse+ executes the associated action a specified number of seconds later. By default, `ActionDelay` is set to 10.

```
if Threshold.StatValue < 5 Or Threshold.StatValue > 10 then
    Threshold.ActionDelay = 10
    Threshold.Result = true
else
    Threshold.Result = false
end if
```

### WithinRange

This threshold script returns a `True` value if the value of the statistic to which the threshold is applied lies exclusively between the values you set. By default, these values are set to 5 and 10.

```
if Threshold.StatValue > 5 and Threshold.StatValue < 10 then
    Threshold.Result = true
else
    Threshold.Result = false
end if
```

### WithinRangeOfValues

This threshold script returns a `True` value if the value of the statistic to which the threshold is applied lies exclusively between the values you set. By default, these values are set to 50 and 1000.

```
if Threshold.StatValue > 50 and Threshold.StatValue < 1000 then
    Threshold.Result = true
else
    Threshold.Result = false
end if
```

```
end if
```

### WithinRangeWDuration

This threshold script returns a `True` value if the value of the statistic to which the threshold is applied lies exclusively between the values you set. By default, these values are set to 5 and 10. If `True`, CCPulse+ executes the associated action a specified number of seconds later. By default, `ActionDelay` is set to 10.

```
if Threshold.StatValue > 5 and Threshold.StatValue < 10 then
    Threshold.ActionDelay = 10
    Threshold.Result = true
else
    Threshold.Result = false
end if
```

---

## Predefined Actions

Actions enable CCPulse+ to alert you when a particular condition has been met with respect to a statistic's value. This section describes the following action scripts which are provided with each Genesys solution:

- `ActiveWebBrowser`
- `ResetColor`
- `state`
- `ExecuteProcess`
- `SendE-MailWithCDO`
- `WAVAudioAlert`
- `Hide`
- `SetColor`
- `PCSpeakerAudioAlert`
- `Show`

This section provides the information that you need to customize the action scripts to meet your contact-center requirements. The scripts are identical for each Genesys solution and are stored in a file that is named `actions.stg`.

Actions have little meaning outside the context of their associated thresholds. Therefore, review “Predefined Thresholds” on [page 77](#) and see the “Threshold/Action Association” topic in the *Reporting 8.1 CCPulse+ Help*.

## How Actions Function

The results of actions persist until CCPulse+ evaluates the result of the associated threshold to be `False`. For example, if you have used the `SetColor` action to apply a Green color when the value of `TotalCalls` is greater than 100, the Green color persists until the value of `TotalCalls` falls below 100.

In this example:

- `TotalCalls` is the targeted statistic.
- `GreaterThan100` is the applied threshold.
- `SetColorGreen` is the threshold's associated action.

The following discussion assumes you are familiar with the VBScript programming language and with the CCPulse+ predefined objects described in “Predefined Objects” on [page 72](#).

## Explanations of the Predefined Actions

In the descriptions that follow, the term *targeted statistic* refers to the statistic to which CCPulse+ applies the action’s associated threshold.

### ActivateWebBrowser

This action opens Microsoft Internet Explorer and navigates to the specified URL. Use the following script format:

```
Dim Browser
Set Browser =
CreateObject("InternetExplorer.Application.1")
Browser.Navigate("www.genesys.com")
Browser.Visible = True
```

### ExecuteProcess

The sample that is provided uses a COM component that is defined in the GsSampleTEObjects.DLL file. The source code for this file is included in the CCPulse+ installation package. For this script to work, you must compile it by using Visual Basic.

---

**Note:** This sample is provided “as is” for your reference. Although every effort has been taken to ensure that this sample functions correctly, Genesys does not offer product support for it.

---

To create the Genesys File System object (FSObject) and execute a script, use the following script:

```
Set FSObject =
CreateObject("GsSampleTEObjects.GsActionFSObject")

FSObject.Execute("C:\Program Files\Plus!\Microsoft
Internet\iexplore.exe")
```

This example opens Microsoft Internet Explorer within Windows NT.

### Hide

This action hides the object to which the action’s associated threshold has been assigned on the Call Center Objects pane, in the Tree view, and in the Grid view (the row that contains the specified statistic). CCPulse+ hides the object when the conditions set for the associated threshold are True. The object remains hidden unless you configure a second threshold/action combination

for the targeted statistic using an alternative threshold condition and the Show action.

```
CCPulseNotifier.Hide
```

### **PCSpeakerAudioAlert**

This action uses a COM component that is defined in the `GsSampleTEObjects.DLL` file. The source code for this file is included in the CCPulse+ installation package. For this script to work, you must compile it by using Visual Basic.

To create the Genesys Sound object, use the following script:

```
Set SoundObject =
    CreateObject("GsSampleTEObjects.GsActionSoundObject")
    SoundObject.Beep
```

### **ResetColor**

This action sets to its default color the background color of the table cell that contains the targeted statistic.

```
CCPulseNotifier.ResetColor
```

### **SendE-MailWithCDO**

Preinstall Microsoft Outlook 98 or Microsoft Exchange Server version 5.5 to execute the following script.

```
Dim msgBody
Dim thresholdInfo
msgBody="A mail from the CCPulse+ threshold engine!"&vbNewLine
thresholdInfo="StatValue:"&CStr(Threshold.StatValue)&vbNewLine+
"StatAlias:"&CStr(Threshold.StatAlias)&vbNewLine+
"CFGTenantDbid:"&CStr(Threshold.CFGTenantDbid)&vbNewLine+
"CFGDbid:"&CStr(Threshold.CFGDbid) & vbNewLine +
"CFGObjectId:"&CStr(Threshold.CFGObjectId)&vbNewLine+
"CFGType:"&CStr(Threshold.CFGType)&vbNewLine
SendMail "", "", msgBody+thresholdInfo, "Alarm notification from
    CCPulse+"

```

```
Sub SendMail(profile, recipient, message, subject)
    Dim objSession, objAddrEntry, oInbox, colMessages, oMessage,
        colRecipients, oRecipient

```

```
    Set objSession = CreateObject("MAPI.Session")
    objSession.Logon profile, "", True, False, 0, False

```

```
    Set objAddrEntry = objSession.CurrentUser
    Set oInbox = objSession.Inbox

```

```

Set colMessages = oInbox.Messages
Set oMessage = colMessages.Add()
Set colRecipients = oMessage.Recipients

If recipient = "" Then
    colRecipients.Add objAddrEntry
Else
    colRecipients.Add recipient
End If
colRecipients.Resolve

oMessage.Subject = subject
oMessage.Text = msg
oMessage.Send

objSession.Logoff
Set objSession = nothing
End Sub

```

### SetColor

This action sets to whatever color you choose—for example, dark red—the background color of the table cell that contains the targeted statistic.

```
CCPulseNotifier.SetColor( Color.DarkRed )
```

You can modify this action script to use any of the CCPulse+ predefined colors, or you can specify a custom color in RGB format—for example:

```
CCPulseNotifier.SetColor( RGB( 7, 77, 177 ) )
```

The available predefined colors are the following:

- |         |              |               |
|---------|--------------|---------------|
| • Blue  | • DarkGray   | • DarkCyan    |
| • Green | • DarkRed,   | • DarkBlue    |
| • Red   | • Yellow     | • Magenta     |
| • White | • DarkYellow | • DarkMagenta |
| • Black | • DarkGreen  |               |
| • Gray  | • Cyan       |               |

### Show

This action displays or makes reappear the targeted object in the Call Center Objects pane, in the Tree view, and in the Graph view (the row that contains the specified statistic). The object remains visible unless you configure a second threshold/action combination for the targeted statistic by using an alternative threshold condition and the Hide action.

```
CCPulseNotifier.Show
```

**state**

This action returns information about an agent's state at a particular DN including when the status began, the agent's ID, the login ID, and the status that occurs at the DN:

```
result.Text = GetAgentState();
function GetAgentState()
{
    if(state.type != "AgentState")
        return "n/a";
    var r = "(" + FormatDate(state.StartTime) + ") ";
    r += state.AgentID;
    r += " [Place: " + state.PlaceID;
    r += " Login: " + state.LoginID + "];";
    r += ", Status: " + state.Status;
    r += "; DNS: ";
    for(var e = new Enumerator(state.DNs); !e.atEnd(); e.moveNext())
    { r += GetDNState(e.item()); }
    return r;
}

function FormatDate(dateVal)
{
    var dateObj = new Date(dateVal);
    return dateObj.getHours() + ":" + dateObj.getMinutes() + ":" +
        dateObj.getSeconds();
}

function GetDNState(dn)
{
    var r = "(" + FormatDate(dn.StartTime) + ") ";
    r += dn.DN;
    r += " [Switch: " + dn.SwitchID;
    r += ", Type: " + dn.DNType + "], Status: " + dn.Status;
    r += "; Actions: ";
    for(var e = new Enumerator(dn.Actions); !e.atEnd(); e.moveNext())
    { r += GetAction(e.item()) + " "; }
    return r;
}

function GetAction(a)
{
    var r = "(" + FormatDate(a.StartTime) + ") ";
    r += a.Action;
    return r;
}
```



### WAVAudioAlert

You can implement COM objects by using Visual Basic or C++. The sample that is provided uses a COM component that is defined in the `GsSampleTEObjects.DLL` file. The source code for this file is included in the CCPulse+ installation package. For this script to work, you must compile it by using Visual Basic.

---

**Note:** This sample is provided “as is” for your reference. Although every effort has been taken to ensure that this sample functions correctly, Genesys does not offer product support for it.

---

To create the Genesys Sound object, use the following script:

```
Set SoundObject =  
CreateObject("GsSampleTEObjects.GsActionSoundObject")  
CreateObject("GsSampleTEObjects.GsActionFSObject")
```

Specify the full path to a .WAV file in order to play it—for example:

```
SoundObject.PlaySoundFile ("c:\winnt\media\tada.wav")
```



# 7

## Measuring CCPulse+/Stat Server Traffic

If your environment places CCPulse+ and Stat Server on different local area networks (LANs), you might be interested in determining the impact of CCPulse+/Stat Server traffic on your wide area network (WAN). This chapter shows how you can approximate CCPulse+/Stat Server traffic flow and includes the following sections:

- [Determining Factors, page 91](#)
- [The Number of Requests, page 91](#)
- [The Number of Responses, page 92](#)
- [The Size of One Request/Response, page 92](#)

---

### Determining Factors

Traffic between CCPulse+ and Stat Server is dependent on many factors, including:

- The speed of both computers.
- The number of requests and responses in the data stream.
- Network speed—for example, a network operating at 100 Mbits/second might yield poor performance.

The data stream is dependent on how fast your network operates. Obviously, a fast network prevents many traffic problems.

---

### The Number of Requests

The traffic specifically from CCPulse+ to Stat Server depends on:

- The number of statistics requested by CCPulse+ views.

- The number of monitored agents, agent groups, places, place groups, queues, groups of queues, routing points, and groups of routing points in the CCPulse+ workspace. CCPulse+ issues one current state request for each.

Moreover, if you request the extended current status for particular object, CCPulse+ requests current state information for the entire status tree of that object which includes subordinate objects. For the extended current status of an agent group, for example, CCPulse+ also receives the current state for all agents, places, DNs, and DN actions within that group. Thus, any formula measuring the number of requests is dependent on the content of a particular workspace and the objects for which you requested the extended current status.

---

## The Number of Responses

The traffic specifically from Stat Server to CCPulse+ is dependent on the notification mode specified for each statistic along with each request. There are four types of notification modes:

- Change-based—Stat Server sends the current value whenever the value of the statistic significantly changes. A statistic's `Insensitivity` setting determines what a significant change in value is. Higher `Insensitivity` settings typically reduce network traffic, but they also reduce reporting accuracy because values are not updated as frequently.
- Time based—Stat Server sends the current value every  $x$  seconds, in accordance with the specified notification frequency. Lower notification frequencies reduce network traffic, but they also affect the availability of data in real time. For instance, instead of having updates every 2 seconds, a lower frequency specification may provide updates every 60 seconds.
- Reset based—Stat Server sends the current value right before setting it to 0.
- No notification—Stat Server sends a response only when you issue a `Peek Statistic` request.

Depending on which notification mode you define for each statistic, Stat Server might send no response, one response, or constant responses. In addition to these four notification modes, the user can request updates at any time by using the Peek Statistics feature. Refer to the *Framework Stat Server User's Guide* for further information about statistics.

---

## The Size of One Request/Response

Except for extended current status requests and responses, the size of each statistical request and response is fixed and significantly less than 256 bytes. The response size is variable for extended current status requests and depends on the object type and subject parameter of the request.



## Chapter

# 8

## Troubleshooting

This chapter presents some scenarios that you might have to troubleshoot while using CCPulse+ and suggests possible solutions for each.

If you are experiencing difficulties with your CCPulse+ application, browse the following list for the resolutions to some commonly encountered issues.

If you continue to have problems after reviewing this chapter and verifying that your hardware is functioning properly and that your CCPulse+ configuration settings are correct, contact Genesys Customer Care.

These issues are covered in this chapter:

- [Agents Having Trouble Logging In, page 93](#)
- [Wizards Are Disabled, page 94](#)
- [Import/Export Utility Is Disabled, page 94](#)
- [No DB Server Connection Error Message, page 95](#)
- [Agents Missing from Call Center Objects Pane, page 95](#)
- [General SQL Server Error Message, page 96](#)
- [Agents Cannot Monitor Agent Activity, page 96](#)
- [Sudden Stat Server Disconnection, page 96](#)
- [Stat Server Missing from New Workspace, page 97](#)
- [No Historical Associations Error Messages, page 97](#)
- [Cannot Recover Workspace, page 97](#)
- [Can't View Multi-Tenant Data, page 98](#)

---

## Agents Having Trouble Logging In

Confirm that the user name and password are correct, keeping in mind that both are case-sensitive. Confirm that the Settings fields on the CCPulse+ Configuration Server tab are entered correctly.

## Wizards Are Disabled

In Configuration Manager, check that you have been assigned the rank of Administrator. CCPulse+ disables the Template, Threshold, and Action wizards for persons with no rank, or with the rank of User. Figure 13, for example, shows that Administrator ranking is being added to the properties of Agent 7005, who previously had no assigned ranking.

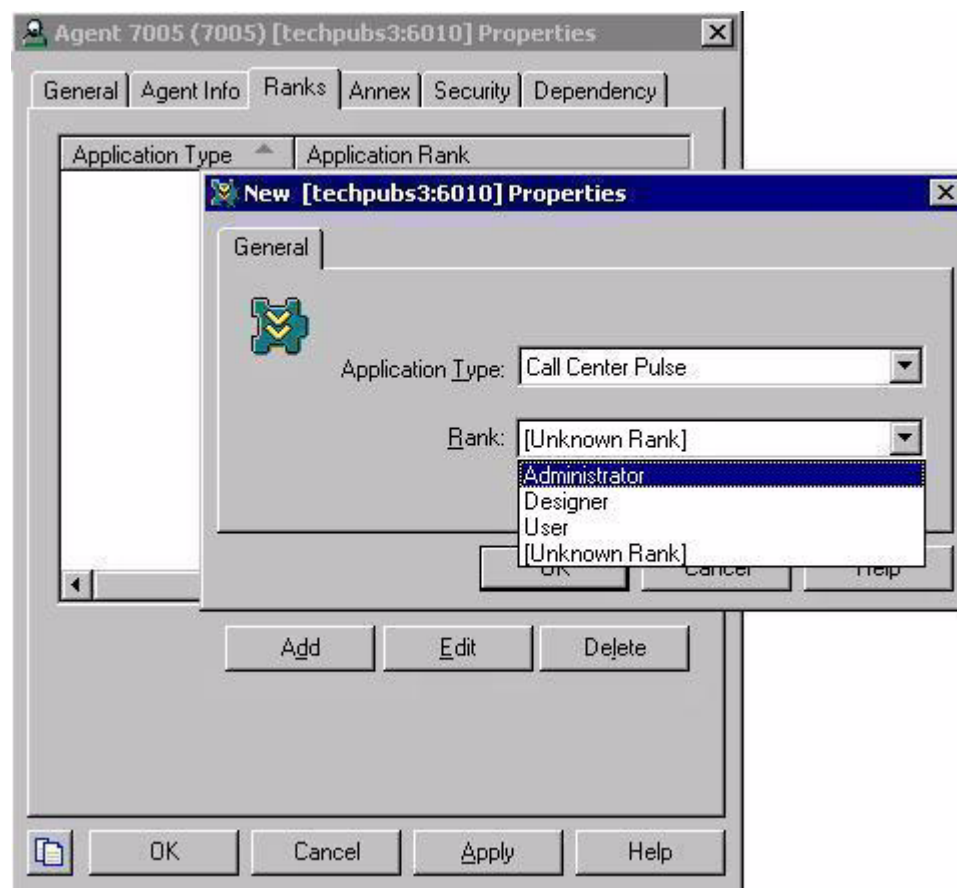


Figure 13: Adding Administrator Ranking to Agent Properties

## Import/Export Utility Is Disabled

In Configuration Manager, check that you have been assigned the rank of Administrator (see Figure 13). CCPulse+ disables the Import/Export Utility for persons with no rank, or with the rank of User.

## No DB Server Connection Error Message

If you receive the error message shown in [Figure 14](#), verify in Configuration Manager that you have correctly configured the database access point to the Data Mart in the CCPulse+ Application object.



Figure 14: No DB Server Connection Error Message

## Agents Missing from Call Center Objects Pane

When selecting object types in the Configuration Wizard, select the IncludeAll (Type:Agent) check box. See [Figure 15](#) on [page 95](#).

Be sure that agents have been set up properly in Configuration Manager. See the “Configuration Wizard” topic in *Reporting 7.5 CCPulse+ Help* for more information.

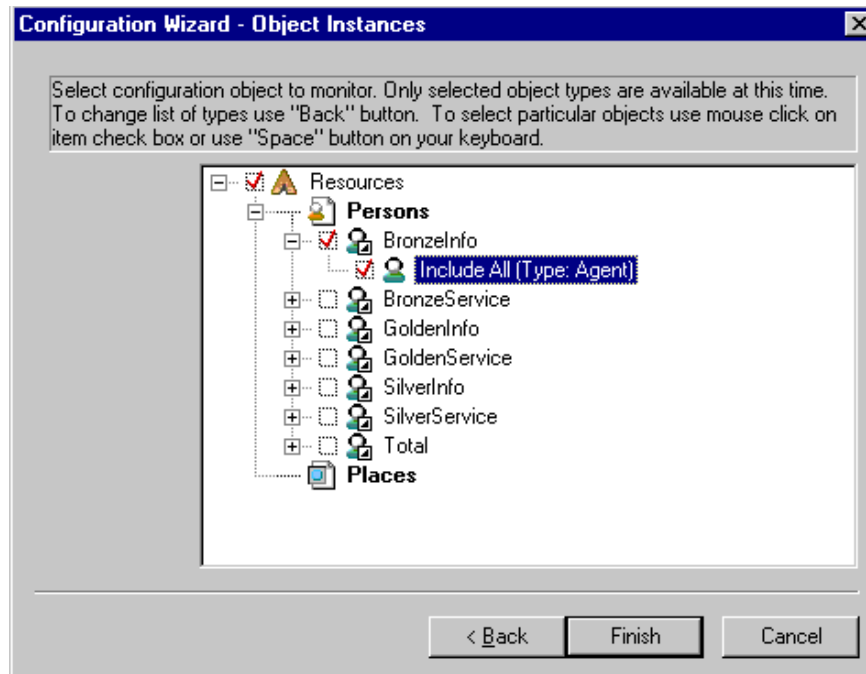


Figure 15: Object Instances

---

## General SQL Server Error Message

"General SQL Server error: Check messages from the SQL Server. Invalid column name ' ... '."

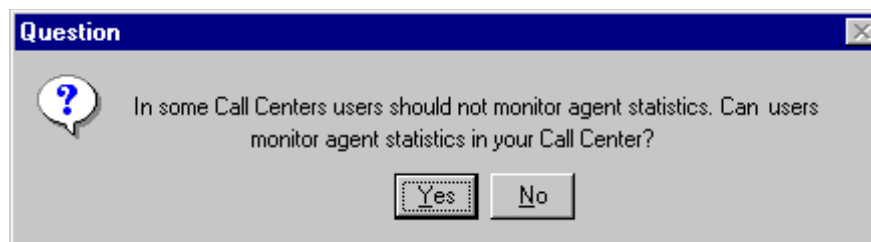
The most probable cause of this error message is that your Data Mart has not been upgraded to release 6.5 or later. To use 6.5 (or later) CCPulse+ templates, you must upgrade all Reporting components to release 6.5 or later.

For more information, refer to the Reporting chapters of the *Genesys Migration Guide* or the “Configuring Genesys Solution Reporting” chapter of the *Reporting 8.1 Deployment Guide*.

---

## Agents Cannot Monitor Agent Activity

Reinstall CCPulse+. At the **Question** dialog box, shown in Figure 16 on [page 96](#), click **Yes** to enable operators to monitor agent statistics.



**Figure 16: Allowing Users to Monitor Agent Statistics**

Refer to “Installing Real-Time Reporting” in the *Reporting 7.5 Deployment Guide* for more information.

---

## Sudden Stat Server Disconnection

Aberrant behavior may result when these events in CCPulse+ occur simultaneously:

- Stat Server is suddenly disconnected.
- Connection to the backup Stat Server cannot be established.
- The current workspace has been changed.

If the `StatServer disconnected` error message appears, click **OK**. When the `Would you like to save your workspace?` message appears, click one of the following:

- **Yes**, to save your current workspace but not your data.
- **No**, to clear both workspace and data.
- **Cancel**, to save the data but not the workspace.



---

## Stat Server Missing from New Workspace

You must specify a Stat Server to which CCPulse+ is to connect. In Configuration Manager, check the **Connections** tab on the **Properties** dialog box of your CCPulse+ Application object to ensure the correct Stat Server is listed.

---

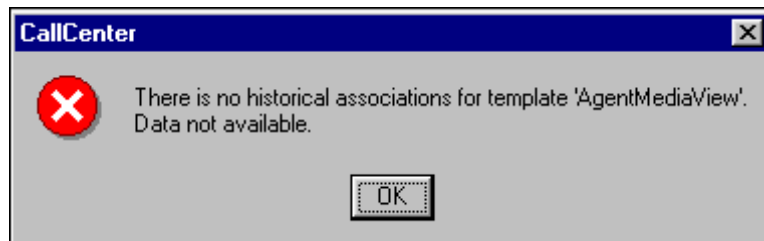
## No Historical Associations Error Messages

If you are creating a historical view, and you receive the error message shown in [Figure 17](#), verify that you have entered an associated historical statistic for each applicable real-time statistic you are using.



**Figure 17: No Data Available Error Message**

If you are trying to create a historical view, and you receive the error message in [Figure 18](#), confirm that you have correctly configured your Data Mart database access point in the CCPulse+ Application object.



**Figure 18: No Historical Associations Error Message**

---

## Cannot Recover Workspace

Under the very rare circumstance when your workspace becomes corrupt, CCPulse+ will not enable you to recover it. Instead, if you try to open the workspace, CCPulse+ displays the following error message:

Workspace [name] corrupted! It cannot be recovered. Please delete.

A workspace can become corrupt, for instance, if it was previously only partially saved as is the case when the related CCPulse+ process is killed

during the save operation or given file system problems. For this reason, Genesys recommends that you periodically back up your storage (\*.stg) files.

---

## Can't View Multi-Tenant Data

The tenant to which a user belongs and the whether the user can view environment-level data is determined by how the user was originally defined to Configuration Server. CCPulse+ will display data for only those tenants that are monitored by the specific Stat Server application to which CCPulse+ is connected.



## Supplements

# Related Documentation Resources

The following resources provide additional information that is relevant to this software. Consult these additional resources as necessary.

## Reporting

- *Reporting 8.1 CCPulse+ Help*, which describes how to navigate the CCPulse+ interface, operate the wizards, create templates and views, and associate actions to specific thresholds that you might set.
- The *Reporting 8.1 Deployment Guide*, which will help you configure, install, start, stop, and uninstall your Reporting environment. This guide also provides instructions for setting up CCPulse+ administrators and users.
- The *Framework Stat Server User's Guide*, which will help you understand statistics configuration.
- The *Reporting 8.0 Reference Manual*, which provides general information about performance measurements, how Reporting behaves during time shifts, and how to set up custom reports for skills-based and partial-period reporting.
- The *Reporting 8.0 Master Index*, which will help you find where other related topics are documented.

## Genesys

- *Genesys Technical Publications Glossary*, which ships on the Genesys Documentation Library DVD, provides a comprehensive list of the Genesys and computer-telephony integration (CTI) terminology and acronyms used in this document.
- *Genesys Migration Guide*, which ships on the Genesys Documentation Library DVD, provides documented migration strategies for Genesys product releases. Contact Genesys Customer Care for more information.

Information about supported hardware and third-party software is available on the Genesys Customer Care website in the following documents:

- *[Genesys Supported Operating Environment Reference Guide](#)*
- *[Genesys Supported Media Interfaces Reference Manual](#)*

Consult these additional resources as necessary:

- *Genesys Interoperability Guide*, which provides information on the compatibility of Genesys products with various Configuration Layer Environments; Interoperability of Reporting Templates and Solutions; and *Gplus* Adapters Interoperability.
- *Genesys Database Sizing Estimator Worksheets*, which provides a range of expected database sizes for various Genesys products.

For additional system-wide planning tools and information, see the release-specific listings of [System-Level Documents](#) on the Genesys Documentation website ([docs.genesys.com](http://docs.genesys.com)).

Genesys product documentation is available on the:

- Genesys Customer Care website at <http://genesys.com/customer-care>.
- Genesys Documentation site at <http://docs.genesys.com/>.
- Genesys Documentation Library DVD and/or the Developer Documentation CD, which you can order by e-mail from Genesys Order Management at [orderman@genesys.com](mailto:orderman@genesys.com).

# Document Conventions

This document uses certain stylistic and typographical conventions—introduced here—that serve as shorthands for particular kinds of information.

## Document Version Number

A version number appears at the bottom of the inside front cover of this document. Version numbers change as new information is added to this document. Here is a sample version number:

80rt\_ad\_ccpulse+\_12-2011\_v8.0.100.00

You will need this number when you are talking with Genesys Customer Care about this product.

## Screen Captures Used in This Document

Screen captures from the product graphical user interface (GUI), as used in this document, may sometimes contain minor spelling, capitalization, or grammatical errors. The text accompanying and explaining the screen captures corrects such errors *except* when such a correction would prevent you from installing, configuring, or successfully using the product. For example, if the name of an option contains a usage error, the name would be presented exactly as it appears in the product GUI; the error would not be corrected in any accompanying text.

## Type Styles

[Table 1](#) describes and illustrates the type conventions that are used in this document.

**Table 1: Type Styles**

Type Style	Used For	Examples
Italic	<ul style="list-style-type: none"> <li>Document titles</li> <li>Emphasis</li> <li>Definitions of (or first references to) unfamiliar terms</li> <li>Mathematical variables</li> </ul> <p>Also used to indicate placeholder text within code samples or commands, in the special case where angle brackets are a required part of the syntax (see the note about angle brackets on <a href="#">page 102</a>).</p>	<p>Please consult the <i>Genesys Migration Guide</i> for more information.</p> <p>Do <i>not</i> use this value for this option.</p> <p>A <i>customary and usual</i> practice is one that is widely accepted and used within a particular industry or profession.</p> <p>The formula, <math>x + 1 = 7</math> where <math>x</math> stands for . . .</p>
Monospace font (Looks like teletype or typewriter text)	<p>All programming identifiers and GUI elements. This convention includes:</p> <ul style="list-style-type: none"> <li>The <i>names</i> of directories, files, folders, configuration objects, paths, scripts, dialog boxes, options, fields, text and list boxes, operational modes, all buttons (including radio buttons), check boxes, commands, tabs, CTI events, and error messages.</li> <li>The values of options.</li> <li>Logical arguments and command syntax.</li> <li>Code samples.</li> </ul> <p>Also used for any text that users must manually enter during a configuration or installation procedure, or on a command line.</p>	<p>Select the Show variables on screen check box.</p> <p>In the Operand text box, enter your formula.</p> <p>Click OK to exit the Properties dialog box.</p> <p>T-Server distributes the error messages in EventError events.</p> <p>If you select true for the inbound-bsns-calls option, all established inbound calls on a local agent are considered business calls.</p> <p>Enter exit on the command line.</p>
Square brackets ([ ])	A particular parameter or value that is optional within a logical argument, a command, or some programming syntax. That is, the presence of the parameter or value is not required to resolve the argument, command, or block of code. The user decides whether to include this optional information.	<code>smcp_server -host [/flags]</code>
Angle brackets (< >)	<p>A placeholder for a value that the user must specify. This might be a DN or a port number specific to your enterprise.</p> <p><b>Note:</b> In some cases, angle brackets are required characters in code syntax (for example, in XML schemas). In these cases, italic text is used for placeholder values.</p>	<code>smcp_server -host &lt;confighost&gt;</code>









# Index

## Symbols

[] (square brackets)	102
< > (angle brackets)	102

## A

Action object properties	
Action	66
StartTime	66
type	66
Action property	66
ActionDelay object, in threshold scripts	72
action-related information, obtaining	65
actions	
ActivateWebBrowser	85
CCPulseNotifier in	74
CFGDbid object	73
CFGObjectID object	73
CFGTenantDbid object	73
CFGType object	74
color enumeration objects	75
configuration objects	73
example	84
ExecuteProcess	85
explanation of predefined actions	85
Hide	85
Hide object	74
PCSpeakerAudioAlert	86
ResetColor	86
ResetColor object	74
SendE-MailWithCDO	86
SetColor	87
SetColor object	74
Show	87
Show object	74
using with thresholds	84
WAVAudioAlert	89
Actions property	65
ActionsStorageFullPath configuration option	28
ActivateWebBrowser action	85

agent group capacity	
calculation	40
performance	40
agent login	
troubleshooting problems	93
AgentGroupID property	63
AgentID property	62
AgentLoggedIn threshold	79
AgentLoggedOut threshold	80
AgentStats, customizing in Registry	45
angle brackets	102
audience	8

## B

basic statistics	
icon	59
in formulas	60
BinActionsStorageFullPath configuration	
option	28
BinTemplatesStorage FullPath configuration	
option	28
BinThresholdsStorageFullPath configuration	
option	28
BinWorkspacesStorageFullPath configuration	
option	28
brackets	
angle	102
square	102

## C

CampaignActivated threshold	80
CampaignDeactivated threshold	80
Capacities property	
CurrentInteractions	64
described	63
MaxInteractions	64
MediaType	64
RoutableInteractions	64

capacity format	
display	68
predefined	68
user-defined	68
CCPulse+	
overview	11
server connections	53
status bar	54, 56
using composite metrics	50
CCPulseNotifier predefined object	74
CFGDbid object, in action scripts	73
CfgEventDetails configuration option	20
CFGObjectID object, in action scripts	73
CFGTenantDbid object, in action scripts	73
CFGType object, in action scripts	74
color codes, RGB	75
column names	
in templates	50
linking objects using	50
Common and Security section	14
composite metrics	50
configuration objects, in action scripts	73
configuration options	
ActionsStorageFullPath	28
BinActionsStorageFullPath	28
BinTemplatesStorageFullPath	28
BinThresholdsStorageFullPath	28
BinWorkspacesStorageFullPath	28
CfgEventDetails	20
CurrentStateEnable	37
CurrentStateRefreshInterval	35
DbEventDetails	21
DefaultStorageType	27
DelayBeforeRemoval	35
DisableAgentCurrentState	38
DisableCreateRemoveViews	35
DisableHideShowActionsOnGraph	36
DisableRowColVisibilityChange	36
DisableThresholdsDlg	30, 39
EnableAgentCapacity	39
EnableAgentCapacityStatus	19, 39
EnableAgentGroupCapacity	40
EnabledDNAliases	31
enable-ipv6	14
EnableXMLExport	31
ExtendedCurrentStatus	17
FirstDayOfWeek	19
IgnoreNewObjectNotifications	40
inactivity-timeout	14
MaxIntervals	19
MaxNumberOfAgents	36
MediaTypes	18, 68
MinDayNumberInFirstWeek	19
NoAggregationInterval	19
RetainSelectedTypes	41
SafeScriptingMode	41
ShowAgentLoginID	31
ShowAgentSkills	32

ShowDurationBeforeStatusName	32
ShowStatusReasons	33
StatEventDetails	20
TemplatesStorageFullPath	28
ThresholdsStorageFullPath	28
TimeZone	20
UseStatServerVirtualGroups	42
WholeWeeks	20
WorkspaceAutoLoad	42
WorkspacesStorageFullPath	28
XMLActionsStorageFullPath	29
XMLTemplatesStorageFullPath	29
XMLThresholdsStorageFullPath	29
XMLWorkspacesStorageFullPath	29
connection failures	
Configuration Server	54
Stat Server	56
connections, Data Mart	49
conventions	
in document	101
type styles	102
current status, determining	62
CurrentAgentTargetState statistic	69
CurrentInteractions capacity item	64
CurrentStateEnable configuration option	37
CurrentStateRefreshInterval configuration option	35
CurrentTargetState statistical category	69
custom statistics	62
determining current status	62
formatting return values	68
icon	59
customizing	
AgentStats	45
DeltaAvgTime	45
DeltaCntCalls	46
DeltaTotalTime	46
FormatAgentInfo	46
GridSortingInterval	46
HistoricalUpdateFrequency	47
IntervalForCurrentUpdate	47
NotifyEvery	47
Windows Registry settings	44
CustomStatistic section	17

## D

Data Mart	
connections	49
using with CCPulse+	49
DB Server, troubleshooting connection problems with	95
DbEventDetails configuration option	21
DefaultStorageType configuration option	27
DelayBeforeRemoval configuration option	35
DeltaAvgTime, customizing in Registry	45
DeltaCntCalls, customizing in Registry	46

DeltaTotalTime, customizing in Registry . . .	46
DisableAgentCurrentState configuration option . . . . .	38
DisableCreateRemoveViews configuration option . . . . .	35
DisableHideShowActionsOnGraph configuration option . . . . .	36
DisableRowColVisibilityChange configuration option . . . . .	36
DisableThresholdsDlg configuration option . . . . .	30, 39
displaying agents, troubleshooting . . . . .	95
DN	
aliases in CCPulse+ displays . . . . .	31
numbers in CCPulse+ displays . . . . .	31
property . . . . .	65
DN object properties	
Actions. . . . .	65
DN. . . . .	65
DNType . . . . .	65
StartTime . . . . .	65
Status . . . . .	65
SwitchID. . . . .	65
type . . . . .	65
DNs property . . . . .	63
DNType property . . . . .	65
document	
conventions . . . . .	101
version number . . . . .	101

## E

EnableAgentCapacity configuration option. . .	39
EnableAgentCapacityStatus configuration option . . . . .	19, 39
EnableAgentGroupCapacity configuration option . . . . .	40
EnableDNAliases configuration option . . .	31
enable-ipv6 configuration option . . . . .	14
EnableXMLExport configuration option . . .	31
error messages	
General SQL Server error . . . . .	96
No connection to specified DB server... . . . .	95
No data available for review... . . . .	97
No historical associations... . . . .	97
ExactValue threshold. . . . .	80
ExactValueWDuration threshold . . . . .	80
ExecuteProcess action. . . . .	85
ExtendedCurrentStatus configuration option. . .	17

## F

FirstDayOfWeek configuration option . . . . .	19
font styles	
italic . . . . .	102

monospace . . . . .	102
for referencing basic statistics . . . . .	60
FormatAgentInfo, customizing in Registry . . .	46

## G

GreaterThanLimit threshold . . . . .	81
GreaterThanLimitWDuration threshold . . . . .	81
GridSortingInterval, customizing in Registry . .	46

## H

Hide	
action . . . . .	85
object, in action scripts . . . . .	74
historical associations	
for custom statistics . . . . .	51
troubleshooting problems with . . . . .	97
historical reporting considerations	
associations for statistics . . . . .	51
column names . . . . .	50
composite metrics. . . . .	50
Data Mart . . . . .	49
using the last_N_intervals parameter. . . . .	51
Historical View section. . . . .	18
HistoricalUpdateFrequency, customizing in Registry . . . . .	47

## I

IgnoreNewObjectNotifications configuration option . . . . .	40
Import/Export Utility, troubleshooting . . . . .	94
inactivity-timeout configuration option . . . . .	14
IntervalForCurrentUpdate, customizing in Registry . . . . .	47
italics. . . . .	102

## J

JScript language . . . . .	60
----------------------------	----

## L

last_N_intervals, using this parameter. . . . .	51
LessThanLimit threshold. . . . .	82
LessThanLimitWDuration threshold . . . . .	82
LessThanSpecifiedLimit threshold. . . . .	81
Login ID property . . . . .	62

## M

MaxInteractions capacities item . . . . .	64
---	----

MaxIntervals configuration option . . . . . 19  
 MaxNumberOfAgents configuration option. . . . . 36  
 MediaType capacity item. . . . . 64  
 MediaTypes configuration option. . . . . 18, 68  
 metrics, using composite. . . . . 50  
 MinDayNumberInFirstWeek configuration  
   option . . . . . 19  
 monitoring agent activity, troubleshooting  
   problems with . . . . . 96  
 monospace font . . . . . 102

## N

NoAggregationInterval configuration option . . . 19  
 NotEqual threshold. . . . . 82  
 NotEqualWDuration threshold . . . . . 82  
 NotifyEvery, customizing in Registry . . . . . 47

## O

OutOfRange threshold . . . . . 83  
 OutOfRangeWDuration threshold . . . . . 83

## P

PCSpeakerAudioAlert action. . . . . 86  
 persistent connection. . . . . 54  
 PlaceID property . . . . . 62  
 predefined format string . . . . . 68, 70  
 predefined objects, in formulas. . . . . 62  
 Predefined Statistics window. . . . . 59

## R

ResetColor  
   action . . . . . 86  
   object, in action scripts . . . . . 74  
 Result object, in threshold scripts . . . . . 72  
 RetainSelectedTypes configuration option . . . 41  
 return values, formatting . . . . . 68  
 RoutableInteractions capacity item. . . . . 64

## S

SafeScriptingMode configuration option . . . . 41  
 sections  
   Common and Security. . . . . 14  
   CustomStatistic . . . . . 17  
   Historical View. . . . . 18  
   Storage . . . . . 26  
   UserInterface . . . . . 30  
   View . . . . . 35  
   Workspace . . . . . 36

SendE-MailWithCDO action . . . . . 86  
 servers, disconnecting from CCPulse+ . . . . 53  
 SetColor  
   action . . . . . 87  
   object, in action scripts . . . . . 74  
 Show  
   action . . . . . 87  
   object, in action scripts . . . . . 74  
 ShowAgentLoginID configuration option. . . . 31  
 ShowAgentSkills configuration option . . . . . 32  
 ShowDurationBeforeStatusName configuration  
   option . . . . . 32  
 ShowStatusReasons configuration option. . . . 33  
 SQL Server, troubleshooting problems with . . 96  
 square brackets . . . . . 102  
 StartTime property . . . . . 62, 63, 65, 66  
 Stat Server  
   troubleshooting connection problems. . . . 97  
   troubleshooting sudden disconnect. . . . . 96  
 StatAction object. . . . . 76  
 StatAlias object, in threshold scripts. . . . . 72  
 state object properties  
   AgentGroupID. . . . . 63  
   AgentID . . . . . 62  
   Capacities. . . . . 63  
   DNs . . . . . 63  
   LoginID . . . . . 62  
   PlaceID . . . . . 62  
   StartTime . . . . . 62, 63  
   Status . . . . . 62  
   type . . . . . 62, 63  
 state predefined object . . . . . 66  
 StatEventDetails configuration option . . . . 20  
 statistics, historical associations for custom . . 51  
 StatReasons object, in threshold scripts. . . . 73  
 status bar, CCPulse+ . . . . . 54, 56  
 Status property . . . . . 62, 65  
 StatValue object, in threshold scripts . . . . 72  
 Storage section . . . . . 26  
 storages, customizing location. . . . . 26  
 SwitchID property . . . . . 65  
 syntax . . . . . 60

## T

templates, column names in . . . . . 50  
 TemplatesStorageFullPath configuration  
   option . . . . . 28  
 thresholds  
   ActionDelay object . . . . . 72  
   AgentLoggedIn . . . . . 79  
   AgentLoggedOut . . . . . 80  
   CampaignActivated . . . . . 80  
   CampaignDeactivated . . . . . 80  
   ExactValue . . . . . 80  
   ExactValueWDuration. . . . . 80

example	78
GreaterThanLimit	81
GreaterThanLimitWDuration	81
LessThanLimit	82
LessThanLimitWDuration	82
LessThanSpecifiedLimit	81
NotEqual	82
NotEqualWDuration	82
OutOfRange	83
OutOfRangeWDuration	83
predefined explained	79
Result object	72
StatAction objects	76
StatAlias object	72
StatReasons object	73
StatValue object	72
using with actions	77
WithinRange	83
WithinRangeOfValues	83
WithinRangeWDuration	84
ThresholdsStorageFullPath configuration	
option	28
TimeZone configuration option	20
troubleshooting	
agent login issues	93
agent missing from displays	95
general SQL server error	96
Import/Export Utility disabled	94
missing Stat Server	97
monitoring agent activity	96
no DB Server connection	95
no historical associations	97
Stat Server disconnect	96
wizards disabled	94
type property	62, 63, 65, 66
type styles	
conventions	102
italic	102
monospace	102
typographical styles	101, 102

## U

user-defined format string	68, 69
UserInterface section	30
UseStatServerVirtualGroups configuration	
option	42

## V

version numbering, document	101
View section	35

## W

WAVAudioAlert action	89
WholeWeeks configuration option	20
Windows Registry	
customizing settings in	44
root path	44
WithinRange threshold	83
WithinRangeOfValues threshold	83
WithinRangeWDuration threshold	84
wizards, troubleshooting problems with	94
Workspace section	36
WorkspaceAutoLoad configuration option	42
WorkspacesStorageFullPath configuration	
option	28

## X

XMLActionsStorageFullPath configuration	
option	29
XMLTemplatesStorageFullPath configuration	
option	29
XMLThresholdsStorageFullPath configuration	
option	29
XMLWorkspacesStorageFullPath configuration	
option	29

