



# Multi-Site Support

This chapter contains general information about multi-site environments, as well as information on deploying a multi-site environment for your T-Server.

This chapter is divided into the following sections:

- [Multi-Site Fundamentals, page 39](#)
- [ISCC Call Data Transfer Service, page 41](#)
- [ISCC/Call Overflow Feature, page 60](#)
- [Number Translation Feature, page 64](#)
- [Network Attended Transfer/Conference Feature, page 72](#)
- [Event Propagation Feature, page 74](#)
- [ISCC Transaction Monitoring Feature, page 81](#)
- [Configuring Multi-Site Support, page 81](#)
- [Next Steps, page 95](#)

---

Note: Each switch/T-Server combination offers different multi-site options. For details describing your specific switch/T-Server environment, refer to the “T-Server Common Configuration Options” chapter.

---

The following instructions apply to both local and remote switches and T-Servers. Because different vendor switches can be installed at the local and remote locations, this chapter covers several, but not all, possible configurations. To help determine which sections of this chapter apply to your situation, refer to Table 2 on [page 56](#) and Table 3 on [page 61](#).

---

## Multi-Site Fundamentals

A multi-site configuration has two or more switches that belong to the same enterprise or service provider and that share the Genesys Configuration Database. (In some cases, this may include isolated partitions on a given switch served by different T-Servers.) The main goal of T-Server support for

multi-site operations is to maintain critical information about a call as it travels from one switch to another.

T-Server supports multi-site operations using its *Inter Server Call Control* (ISCC; formerly called External Routing), which supports the following functions:

- **Call matching**—To link instances of a call distributed across multiple sites and to re-attach essential data associated with the call (ConnID, UserData, CallType, and CallHistory). The following T-Server features support this capability:
  - ISCC Call Data Transfer Service (active external routing)—when requested by a T-Server client by specifying the desired destination in the location parameter, and also with various ISCC strategies performed by direct dial or by using the Transfer Connect Service. See “ISCC Transaction Types” on [page 48](#) and “Transfer Connect Service Feature” on [page 59](#).
  - Inter Server Call Control/Call Overflow (ISCC/COF) feature (passive external routing)—applicable when calls are overflowed to another site either directly or manually (see [page 60](#)).
  - Number Translation feature (see [page 64](#)).
  - Network Attended Transfer/Conference (NAT/C) feature (see [page 72](#)).

---

Note: When ISCC detects call instance reappearance on a given site, the call is assigned a unique ConnID and the user data is synchronized with the previous call instances. This ensures that ConnIDs assigned to different instances of the same call on a given site are unique.

---

- **Call data synchronization between associated call instances (ISCC Event Propagation)**—To provide the most current data to call instances residing on remote T-Servers. The following T-Server features support this capability:
  - User Data propagation (see [page 75](#))
  - Party Events propagation (see [page 76](#))

---

Note: ISCC automatically detects topology loops and prevents continuous updates.

---

---

Note: In distributed networks, Genesys recommends using call flows that prevent call topology loops and multiple reappearances of the same call instance. This approach ensures that all T-Servers involved with the call report the same ConnID, and also optimizes telephony trunk allocation by preventing trunk tromboning.

---

The T-Server configuration contains information about other T-Servers with which it will communicate. T-Server uses this information to connect with the other T-Servers. During this “handshake” process, T-Servers exchange information about the following parameters:

- Protocol type
- Switch type
- Server name
- Location name (switch name)
- T-Server role (primary or backup)

To complete the handshake process, T-Servers exchange messages about the current condition of the links to their switches. After the handshake process is complete, T-Server is ready to support a multi-site operation.

---

## ISCC Call Data Transfer Service

Because ISCC supports active external routing, T-Servers that serve different switches (usually on different sites) can exchange call data when a call is passed from one switch to another. With this functionality, T-Server provides its clients with the following additional information about each call received from another switch:

- The connection identifier of the call (attribute `ConnID`).
- Updates to user data attached to the call at the previous site (attribute `UserData`).
- The call type of the call (attribute `CallType`)—In multi-site environments the `CallType` of the call may be different for each of its different legs. For example, one T-Server may report a call as an `Outbound` or `Consult` call, but on the receiving end this call may be reported as `Inbound`.
- The call history (attribute `CallHistory`)—Information about transferring/routing of the call through a multi-site contact center network.

---

**Note:** Load-sharing IVR Servers and Network T-Servers cannot be designated as the destination location for ISCC, except when `cast-type` is set to `dnis-pool`. Consult the *Universal Routing Deployment Guide* for specific configuration details.

---

**Figure 7** shows the steps that occur during a typical external routing (ISCC) transaction. Note that the location where a call is initially processed is called the *origination location*, and the location to which the call is passed is called the *destination location*.

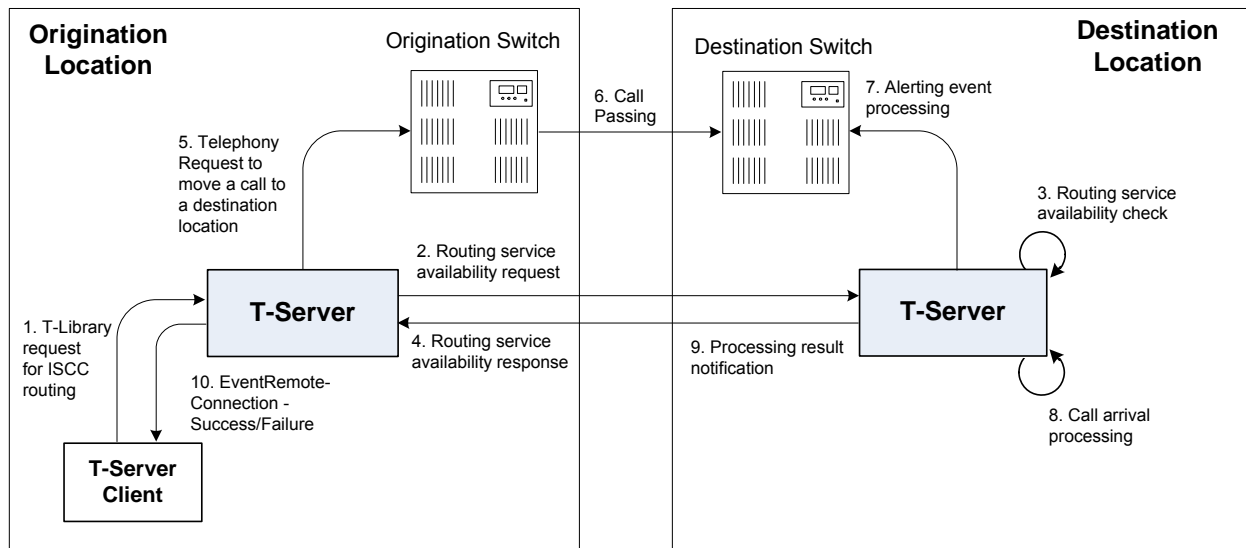


Figure 7: Steps in the ISCC Process

## ISCC Call Flows

The following section identifies the steps (shown in [Figure 7](#)) that occur during an ISCC transfer of a call.

### Step 1

A client connected to the T-Server at the origination location requests this T-Server to pass a call with call data to another location. For this purpose, the client must specify the `location` parameter (`Attribute Location`) when calling a corresponding T-Library function. ISCC processes the following T-Library requests:

- `TInitiateConference`
- `TInitiateTransfer`
- `TMakeCall`
- `TMuteTransfer`
- `TRouteCall`
- `TSingleStepTransfer`

### Step 2

Upon receiving a client's request, the origination T-Server checks that the:

1. Connection to the destination T-Server is configured in the origination T-Server Properties dialog box.
2. The connection to the destination T-Server is active.

3. The destination T-Server is connected to its link.
4. The origination T-Server is connected to its link.

If these four conditions are met, the origination T-Server determines the transaction type that will be used for passing call data to another location in this transaction. The following possibilities exist:

- The client can request what *ISCC transaction type* (or simply *transaction type*) to use by specifying an appropriate key-value pair in the Extensions attribute of the request. The key-value pair must have a key equal to `iscc-xaction-type` and either an integer value as specified in the `TXRouteType` enumeration (see the *Voice Platform SDK 8.x .NET (or Java) API Reference*) or a string value equal to one of the following: `default`, `route`, `direct` (or `direct-callid`), `direct-network-callid`, `direct-notoken`, `direct-ani`, `direct-voi`, `direct-digits`, `reroute`, `dnis-pool`, `pullback`, or `route-voi`.
- If the client does not specify the transaction type in the request or specifies the default transaction type, T-Server checks the Switch configuration for the transaction type configured in the Access Code (or Default Access Code) properties:
  - If the Route Type property of the Access Code is set to any value other than `default`, T-Server uses the specified value as the transaction type.
  - If the Route Type property of the Access Code is set to the default value, T-Server uses the first value from the list specified in the `cast-type` configuration option configured for the destination T-Server. If no value has been specified for the `cast-type` option, the default value of `route` is used as the transaction type.

---

Note: For more information on Access Codes and Default Access Code, see “Switches and Access Codes” on [page 83](#).

---

After the origination T-Server determines the requested transaction type, it determines if the destination T-Server supports this transaction type.

You must list the transaction types T-Server supports in the `cast-type` configuration option.

The origination T-Server issues a request for routing service availability and sends it to the destination T-Server. The T-Server request contains data that should be passed along with the call to the destination location. This data includes the transaction type, `ConnID`, `UserData`, `CallType`, and `CallHistory`.

The timer specified by the `request-tout` configuration option is set when the origination T-Server sends the request. If either the specified timeout expires or the call is abandoned before the origination T-Server receives a response from the destination T-Server, the operation is considered failed. In this scenario, the origination T-Server:

1. Generates a request to the destination T-Server to cancel the request for routing service.
2. Sends EventError to the client that requested the service.
3. Deletes information about the request.

### Step 3

The destination T-Server receives the request for routing service availability and checks the requested type of routing. Depending on the ISCC transaction type, it stores the request information and, when appropriate, allocates access resources for the coming call. For example, an External Routing Point is allocated when the transaction type is route, and an Access Resource of type dn is allocated when the transaction type is dn-is-pool.

---

Note: The resource-allocation-mode and resource-load-maximum configuration options determine how resources are allocated. For option descriptions, refer to the “T-Server Common Configuration Options” chapter.

---

If resources are unavailable, the request is queued at the destination location until a resource is free or the origination T-Server cancels the request. If the request is canceled, the destination T-Server deletes all information about the request.

If resources are unavailable because of incorrect configuration, the destination T-Server returns an error event to the origination T-Server.

### Step 4

If resources are available, the destination T-Server generates a positive response and the timer is started for the interval specified by the timeout configuration option of the destination T-Server.

### Step 5

If the origination T-Server receives a negative response, it sends an EventError message to the client and clears all data about the request.

If the origination T-Server receives the confirmation about routing service availability, it processes the client’s request and sends a corresponding message to the switch. The timer on the origination T-Server is also started for the interval specified by the timeout configuration option of the destination T-Server.

### Step 6

The origination switch processes the T-Server request and passes the call to the destination switch.

## Step 7

If the call arrives at the destination switch, the switch generates an alerting event.

The destination T-Server waits for the call no longer than the interval specified by the timeout configured on the destination T-Server. If the call is not received at the destination location within this interval, the destination T-Server issues a failure notification to the origination T-Server, deletes all data about the request, and, when appropriate, frees the resources previously allocated for the request.

If either the specified timeout expires or the call is abandoned before the origination T-Server receives a response from the destination T-Server, the operation is considered failed. In this case, the origination T-Server:

1. Generates a request to the destination T-Server to cancel the request for routing service.
2. Responds to the client that requested the service in one of the following ways:
  - If the origination T-Server has already sent a response to the request the client sent in Step 1, the origination T-Server supplements its response with `EventRemoteConnectionFailed`.
  - If the origination T-Server has not yet sent a response to the client, the origination T-Server sends `EventError`.
3. Deletes information about the request.

## Step 8

If the destination T-Server matches the arrived call, it updates the `ConnID`, `UserData`, `CallType`, and `CallHistory` attributes with the data received in the request for routing service availability. The connection ID is updated as follows:

The arrived call is assigned the `ConnID` that is specified in the request for routing service availability, but only if this `ConnID` does not coincide with the `ConnID` of a call that has existed at the destination site. If two such `ConnIDs` are identical, the arrived call is assigned a new unique `ConnID`.

For `direct-*` transaction types (where the asterisk stands for a `callid`, `uui`, `ani`, or `digits` extension), the call reaches the destination DN directly.

For the transaction types `route` and `route-uui`, the call first arrives at an External Routing Point from which it is routed to the destination DN. The call info is updated when the call reaches the External Routing Point. An External Routing Point is considered free when the first alerting event (`EventQueued` or `EventRouteRequest`) is distributed.

Please keep the following issues in mind when using the ISCC feature:

- If routing from a dedicated External Routing Point to the destination DN fails, T-Server considers the transaction failed. However, the `ConnID`, `UserData`, `CallType`, and `CallHistory` attributes are updated. Then, T-Server attempts to route the call to one of the Default DNs configured for this External Routing Point.
- If the destination T-Server did not receive a request for routing service availability, but a call arrives at an External Routing Point, T-Server considers the call to be unexpected and routes the call to the DN specified by the `dn-for-unexpected-calls` configuration option. When no alternative targets are defined, the call remains at the External Routing Point until diverted by the switch or abandoned by the caller.

For `reroute` and `pullback` transaction types, the call returns to the network location. For the `dnis-pool` transaction type, the call reaches the destination DN directly.

### Step 9

If, in Step 8, the call does not arrive within the configured timeout, or the transaction fails, the destination T-Server sends a notification of failure to the origination T-Server.

Otherwise, the destination T-Server notifies the origination T-Server that the routing service was successful and deletes all information about the request.

### Step 10

The origination T-Server notifies the client that the routing service was successful (or failed) and deletes all information about the request.

## Client-Controlled ISCC Call Flow

The following section identifies the steps that occur during a client-controlled ISCC transfer of a call.

### Step 1

A client, such as Universal Routing Server (URS), that is connected to the T-Server at the origination location detects a call to be delivered to another destination location.

### Step 2

The client chooses a destination location and the target DN for the call. Then, it sends the `TGetAccessNumber` request to the destination T-Server for routing service availability, indicating the target DN and other call context (`ConnID`, `UserData`, and `CallHistory` attributes).



### Step 3

The destination T-Server receives the request for routing service availability. Depending on the ISCC transaction type, it stores the request information, including the call context. When appropriate, it allocates access resources for the coming call, such as External Routing Point.

If resources are unavailable, the request is queued at the destination T-Server until an appropriate ISCC resource is free or the client cancels the request. If the request is canceled, the destination T-Server deletes all information about the request.

If resources are unavailable because of incorrect configuration, the destination T-Server returns an `EventError` message to the client.

### Step 4

The destination T-Server replies to the client with the `EventAnswerAccessNumber` message, which contains the allocated ISCC resource.

### Step 5

The client requests that the origination T-Server delivers the call to the destination location using the allocated access resource.

### Step 6

The origination T-Server receives and processes the client's request, and then sends a corresponding message to the switch.

### Step 7

The call arrives at the destination switch and is reported to the destination T-Server via CTI. The call is matched by means of ISCC, based on the specified cast-type setting and allocated resource, and then the call is assigned a requested call context (such as `ConnID` or call data). Upon successful transaction completion, the destination T-Server notifies the client by sending `EventRemoteConnectionSuccess`.

The destination T-Server waits for the call no longer than the interval specified by the timeout that is configured on the destination T-Server. If the call is not received at the destination location within this interval, the destination T-Server issues a failure notification to the client by sending `EventRemoteConnectionFailed`, deletes all data about the request, and, when appropriate, frees the resources previously allocated for the request.

The destination T-Server notifies the client whether the routing service succeeded or failed by sending either the `EventRemoteConnectionSuccess` or `EventRemoteConnectionFailure`, respectively.

## ISCC Transaction Types

As switches of different types provide calls with different sets of information parameters, a single mechanism for passing call data between the switches is not feasible in some cases. Therefore, the ISCC feature supports a number of mechanisms for passing call data along with calls between locations. This section describes ISCC transaction type principles, identifies which transaction types are supported for each T-Server, and defines each transaction type (beginning with “direct-ani” on [page 49](#)).

It is important to distinguish the two roles that T-Servers play in an external routing (ISCC) transaction—namely *origination T-Server* and *destination T-Server*.

- The origination T-Server initiates an ISCC transaction. It prepares to send the call to another T-Server and coordinates the process.
- The destination T-Server receives call data from an origination T-Server and matches this data to a call that will arrive at some time in the future.

The distinction between these roles is important because the range of telephony-hardware functionality often requires T-Servers to support two entirely different sets of ISCC transactions based on which of the two roles they play. For instance, it is very common for a particular T-Server to support many types of ISCC transactions when it takes on the origination role, but fewer when it takes on the role of a destination T-Server.

The ISCC transaction type *reroute* is a good example. Most T-Servers support *Reroute* as origination T-Servers, but very few support *Reroute* as destination T-Servers.

## Determining and Configuring Transaction Type Support

You can find descriptions of these transaction types starting on [page 49](#). Use Table 2 on [page 56](#) to identify the transaction types your destination T-Server supports. A blank table cell indicates that T-Server does not support a certain transaction type.

You can configure the transaction types specific to your T-Server as values of the *cast-type* configuration option specified in the ISCC configuration section *extrouter*.

### ISCC Transaction Type General Principles

Generally, since most of the ISCC implementation is done at the T-Server Common Part (TSCP) code level, all T-Servers support certain ISCC transaction types. Any T-Server can act as the origination T-Server for the following transaction types:

- *direct-ani*, [page 49](#)

- `direct-notoken`, [page 51](#)
- `dnis-pool`, [page 51](#)
- `pullback`, [page 53](#)
- `reroute`, [page 53](#)
- `route` (aliased as `route-notoken`), the default transaction type, [page 54](#)

The following transaction types are unevenly supported for both the origination and destination T-Server roles:

- `direct-callid` (aliased as `direct`), [page 49](#)
- `direct-digits` (reserved for Genesys Engineering)
- `direct-network-callid`, [page 50](#)
- `direct-uui`, [page 50](#)
- `route-uui`, [page 55](#)

The `reroute` and `pullback` transaction types are supported only for selected T-Servers in the *destination* role. However, if you implement this support, other transaction types require additional configuration and testing—even those that would normally be supported by default.

## direct-ani

With the transaction type `direct-ani`, the ANI call attribute is taken as the parameter for call matching. Properly configured switches and trunks can keep the ANI attribute when a call is transferred over the network. T-Server can use this network feature for call matching.

---

**Warning!** Depending on the switch platform, it may be possible to inherit the ANI attribute after routing a call to a remote destination, and after performing a single-step transfer and other telephone actions. However, ISCC only works properly in scenarios where the ANI attribute on the destination T-Server is represented by exactly the same digit string as on the origination T-Server.

Typically, the ANI attribute represents the original call identifier (customer phone number), which guarantees that the attribute remains unique. However, you can use the `non-unique-ani` resource type to block ISCC from matching calls based on an ANI that is known to be non-unique. (See “Configuring access resources for non-unique ANI” on [page 92](#) for details.)

---

## direct-callid

With the transaction type `direct-callid`, the call reaches the destination DN directly from another location, and the `CALLID` of the call is taken as the attribute for call matching. When a call arrives at the final destination, the

destination T-Server identifies its `CallID`, and updates the call info if the `CallID` matches.

Use this transaction type when the destination switch has the capability to assign to an incoming call the same network-wide unique `CallID` that the origination switch has already assigned to that call.

---

Notes: The `direct-callid` transaction type is used only in conjunction with the `TRouteCall` and `TSingleStepTransfer` function calls. It is applied only to the call that is in progress, and does not apply to functions that involve in the creation of a new call, such as `TMakeCall`.

For T-Server for Nortel Communication Server 2000/2100, the `direct-callid` transaction type is also applied to the `TMuteTransfer` function.

---

## direct-network-callid

With the transaction type `direct-network-callid`, the call reaches the destination DN directly from another location, and the `NetworkCallID` of the call is taken as the attribute for call matching. When a call arrives at the final destination, the destination T-Server identifies its `NetworkCallID`, and updates the call info if the `NetworkCallID` matches.

Use this transaction type when the destination switch has the capability to assign to an incoming call the same network-wide unique `NetworkCallID` that the origination switch has already assigned to that call.

---

Note: To support this transaction type, you must configure `Target Type` and `ISCC Protocol Parameters` fields of the corresponding `Switch Access Code` in the `Configuration Layer`.

---

## direct-uuI

With the transaction type `direct-uuI`, so-called user-to-user information (UUI) is taken as the attribute for call matching. Some switches make it possible to send a small data packet along with a call. T-Server can use this data to recognize a call passed from one switch to another. The destination T-Server generates a local unique value for UUI, and then notifies the origination T-Server. The origination T-Server uses a provided value to mark the call coming from the origination location. The destination T-Server receives a call and checks whether it is marked with an exact UUI value. If so, the call is considered to be matched.

On the Avaya Communication Manager and the Aspect ACD, UUI is referred to as “user-to-user information.” On the Siemens Hicom 300 switch with

CallBridge, UUI is referred to as “Private User Data.” On the Alcatel A4400/OXE switch, UUI is referred to as “correlator data.”

---

**Note:** To support this transaction type, you must configure your switches to pass the UUI provided by your T-Server. You must also ensure that the trunks involved do not drop this data.

---

## direct-notoken

With the transaction type `direct-notoken`, T-Server expects a call to arrive from another location to the destination DN specified in the request for routing service availability. When a call reaches the specified DN, T-Server processes the call as the expected externally-routed call.

---

**Notes:** This matching criterion is weak because any call that reaches the specified DN is considered to be the expected call. Genesys recommends that you use this transaction type only in a contact center subdivision that can only be reached from within the contact center (such as the second line of support, which customers cannot contact directly).

When using `direct` transaction types, Network T-Servers and load-sharing IVR Servers are not meant to act as destination T-Servers for call routing. Using Network T-Server with these transaction types requires special architecture.

---

## dnis-pool

With the `dnis-pool` transaction type, T-Server reserves one of its DNIS access resources and waits for the call that has the same DNIS attribute as the name of the reserved DNIS access resource.

If the arrived call is matched successfully, the destination T-Server may update the value of the DNIS attribute of the call (along with `ConnID`, `UserData`, `CallType`, and `CallHistory`) with the value of the DNIS attribute of the original call. This occurs when the value of the DNIS attribute of the original call is specified as a value of the key-value pair `_ISCC_TRACKING_NUMBER_` in the `Extensions` attribute of the original client request.

The DNIS matching can be based on any number of digits out of all the digits that comprise the DNIS attribute. The number of digits that T-Server should use for DNIS matching is specified for the destination switch as the ISCC Protocol Parameters property of the Switch Access Code. The value syntax should be as follows:

`dnis-tail=<number-of-digits>`

For example, if this property is set to the `dnis-tail=7` value, ISCC matches only the last seven digits of a DNIS.

You must configure DNIS access resources in the switch; otherwise, ISCC fails to use this transaction type and sends `EventError` in response to the client application request.

---

Note: The `dnis-pool` transaction type is typically used for networks that employ a “behind the SCP” architecture, such as network IVR. Network T-Server for GenSpec and IServer are two examples of this, but other Network T-Servers might also be used in this architecture.

---

### In Load-Balancing Mode

When T-Server uses load balancing for call routing with the `dnis-pool` transaction type, the following processes occur:

1. A client of the origination T-Server sends a request to pass a call to the location with a DNIS access resource specified in the key-value pair `iscc-selected-dnis`.
2. The origination T-Server distributes the request for a routing service to all destination T-Servers.
3. The destination T-Servers receive the request and check that the specified DNIS is not being used by another routing service request.
4. The origination T-Server expects to receive a positive response from each destination T-Server. If the origination T-Server receives a negative response from at least one T-Server, it sends an `EventError` to the client and clears all data about the request. If the origination T-Server receives the confirmation about routing service availability from all destination T-Servers, it processes the client's request and sends a corresponding message to the switch.
5. The origination switch processes the T-Server request and passes the call to the destination switch.
6. The call arrives at the destination switch, which generates an alerting event to one of the corresponding load-balanced destination T-Servers.
7. That destination T-Server processes the call and notifies the origination T-Server that the routing service was successful and deletes all information about the request.
8. The origination T-Server sends a routing service request cancellation to all other destination T-Servers.
9. The origination T-Server notifies the client that the routing service has been successful and deletes all information about the request.

## **pullback**

PULLBACK is used in the following scenario, for those T-Servers that support it:

1. A call arrives at Site A served by a Network T-Server.
2. At Site A, a Network T-Server client requests to pass the call by means of ISCC routing to Site B served by a premise T-Server. Any transaction type except reroute or pullback can be specified in this request.
3. The call arrives at Site B and is either answered by an agent or delivered to a routing point.
4. A client of the premise T-Server at Site B sends a `TRouteCall` or `TSingleStepTransfer` request to transfer the call to the network.
5. The Site B premise T-Server notifies the Network T-Server about this request.
6. The network T-Server receives the notification and issues an `EventRouteRequest` to obtain a new destination.
7. After receiving the new destination information, the Network T-Server disconnects the call from its current premise location at Site B and attempts to route the call to the new destination.
8. The Site B premise T-Server stops tracking the call, which has disconnected from the premise's agent DN or routing point and is delivered to the network.
9. The network T-Server completes routing the call to its new destination.

---

Note: The transaction type pullback can only be used to return a call from a premise T-Server to the Network T-Server that serves the site from which the call was previously transferred.

---

## **reroute**

REROUTE is used in the following scenario, for those T-Servers that support it:

1. A call arrives at Site A served by a Network T-Server.
2. At Site A, a Network T-Server client requests to pass the call by means of ISCC to Site B served by a premise T-Server. Any transaction type except reroute or pullback can be specified in this request.
3. An agent at Site B answers the call.
4. A client of the premise T-Server at Site B sends a `TSingleStepTransfer` or `TRouteCall` request to transfer the call elsewhere (to a PSTN, to an agent, or to a routing point).

5. The Site B premise T-Server notifies the Network T-Server about this request and releases the call leg that resides at the agent's phone (using `TReleaseCall`) or at the Routing Point (using `TRouteCall` with the parameter `RouteTypeCallDisconnect`).
6. The Network T-Server receives the notification and reroutes the call to the requested destination by sending `EventRouteRequest` and attaching the call's user data.

---

Notes: The transaction type `reroute` can only be used to return a call from a premise T-Server to the Network T-Server that serves the site from which the call was previously transferred.

To perform multi-site operations that are initiated with `TRouteCall` and for which the `reroute` transaction type is requested, the origination T-Server must support the `RouteTypeCallDisconnect` subtype of `TRouteCall`.

---

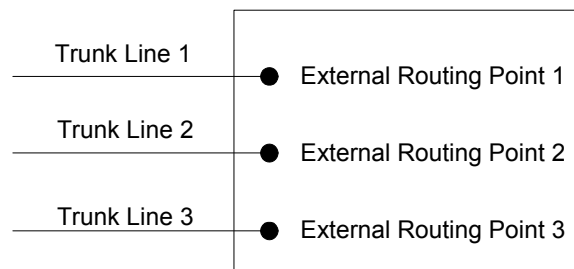
## route

With the transaction type `route` (aliased as `route-notoken`), a call from the origination location reaches a dedicated External Routing Point, and from there, it is routed to a destination DN.

To control configured External Routing Points, T-Server must register these DNs with the switch. Failure to register implies that the External Routing Point is not available for ISCC purposes. Client applications can register External Routing Points via T-Server for monitoring purposes only.

### Point-to-Point (One-to-One)

In the Point-to-Point access mode, only one trunk line is used to access an External Routing Point (for example, VDN, CDN) at the destination site. See [Figure 8](#).



**Figure 8: Point-to-Point Trunk Configuration**

---

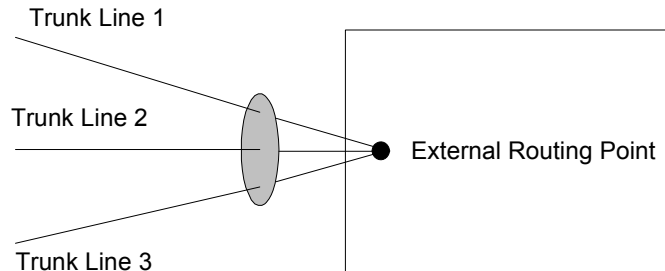
Note: Dedicated DNs of the External Routing Point type must be configured in a switch. See “Configuring Multi-Site Support” on [page 81](#).

---



### Multiple-to-Point (Multiple-to-One)

In the Multiple-to-Point access mode, trunk lines are assigned to the destination switch's trunk group, from which calls are routed to the final destination. See [Figure 9](#).



**Figure 9: Multiple-to-Point Trunk Configuration**

With this configuration, all calls reach the same External Routing Point. The DNIS attribute of a specific call differs from that of other calls and uniquely identifies the trunk from which the call arrived.

---

Note: To switch to this operating mode, you must configure the `route-dn` configuration option for T-Server.

---

### route-uui

The `route-uui` transaction type employs the dedicated External Routing Point feature of the `route` transaction type ([page 54](#)) and the UUI matching feature of the `direct-uui` transaction type ([page 50](#)). This transaction type accommodates those switches that require a designated External Routing Point even though they use UUI for tracking.

---

Note: To support this transaction type, you must configure your switches to pass the UUI provided by your T-Server. You must also ensure that the trunks involved do not drop this data.

---

## T-Server Transaction Type Support

[Table 2](#) shows which transaction types are supported by a specific T-Server. Use this table to determine the transaction types that are available for use with your T-Server. This applies both to the `cast-type` you specify in the configuration options for your T-Server, and to any client-designated `route-type` requests specified for transfers of calls. A blank table cell indicates that T-Server does not support a certain transaction type.

**Table 2: T-Server Support of Transaction Types**

T-Server Type	Transaction Type										
	route		re-route	direct-callid	direct- uui / route- uui	direct- no- token	direct- ani	direct- digits	direct- network- callid	dnis- pool	pull- back
	one-to- one	multiple- to-one									
Aastra MXONE CSTA I	Yes			Yes <sup>a</sup>		Yes	Yes <sup>a</sup>				
Alcatel A4200/OXO	Yes			Yes		Yes	Yes				
Alcatel A4400/OXE	Yes			Yes <sup>a,b,c</sup>	Yes <sup>d</sup>	Yes	Yes <sup>a</sup>		Yes <sup>e</sup>		
Aspect ACD	Yes	Yes		Yes <sup>c</sup>		Yes <sup>f</sup>	Yes <sup>f</sup>				
Avaya Communica- tion Manager	Yes				Yes	Yes	Yes				
Avaya INDeX	Yes					Yes	Yes <sup>b</sup>				
Avaya TSAPI	Yes				Yes	Yes	Yes				
Cisco UCCE	Yes					Yes	Yes				
Cisco Unified Communica- tions Manager	Yes			Yes		Yes	Yes				
CSTA Connector for BroadSoft BroadWorks	Yes					Yes	Yes				
DataVoice Dharma	Yes			Yes		Yes	Yes				
Digitro AXS/20	Yes			Yes		Yes					
EADS Intecom M6880	Yes			Yes		Yes	Yes				

**Table 2: T-Server Support of Transaction Types (Continued)**

T-Server Type	Transaction Type										
	route		re-route	direct-callid	direct-uuui / route-uuui	direct-no-token	direct-ani	direct-digits	direct-network-callid	dnis-pool	pull-back
	one-to-one	multiple-to-one									
EADS Telecom M6500	Yes			Yes		Yes	Yes				
eOn eQueue	Yes			Yes		Yes					
Fujitsu F9600	Yes					Yes					
Huawei C&C08	Yes			Yes							
Huawei NGN	Yes					Yes	Yes				
Mitel MiTAI	Yes					Yes	Yes		Yes <sup>g</sup>		
NEC NEAX/APEX	Yes			Yes		Yes	Yes				
Nortel Communication Server 2000/2100	Yes			Yes <sup>f</sup>		Yes <sup>f</sup>	Yes <sup>f</sup>				
Nortel Communication Server 1000 with SCCS/MLS	Yes			Yes		Yes	Yes		Yes		
Philips Sopho iS3000	Yes			Yes		Yes	Yes				
Radvision iContact	Yes		Yes								Yes
Samsung IP-PCX IAP	Yes			Yes		Yes					
Siemens Hicom 300/HiPath 4000 CSTA I	Yes			Yes	Yes <sup>d</sup>	Yes	Yes				

**Table 2: T-Server Support of Transaction Types (Continued)**

T-Server Type	Transaction Type										
	route		re-route	direct-callid	direct- uui / route- uui	direct- no- token	direct- ani	direct- digits	direct- network- callid	dnis- pool	pull- back
	one-to-one	multiple-to-one									
Siemens HiPath 3000	Yes			Yes		Yes					
Siemens HiPath 4000 CSTA III	Yes				Yes <sup>d</sup>	Yes	Yes				
Siemens HiPath DX	Yes				Yes <sup>h</sup>	Yes	Yes <sup>i</sup>				
SIP Server	Yes		Yes		Yes <sup>j</sup>	Yes					Yes
Spectrum	Yes	Yes		Yes		Yes <sup>f</sup>	Yes <sup>f</sup>				
Tadiran Coral	Yes			Yes		Yes	Yes				
Teltronics 20-20	Yes			Yes		Yes	Yes				
Tenovis Integral 33/55	Yes			Yes		Yes	Yes				
Network T-Servers											
AT&T											
Concert											
CRSP											Yes
DTAG			Yes								
GenSpec	Yes	Yes	Yes							Yes	
IVR Server, using network configuration	Yes	Yes	Yes							Yes	Yes
KPN			Yes								
ISCP											
MCI											

**Table 2: T-Server Support of Transaction Types (Continued)**

T-Server Type	Transaction Type										
	route		re-route	direct-callid	direct-uuui / route-uuui	direct-no-token	direct-ani	direct-digits	direct-network-callid	dnis-pool	pull-back
	one-to-one	multiple-to-one									
NGSN	Yes										Yes
Network SIP Server	Yes					Yes	Yes			Yes	
Sprint	Yes										
SR-3511											
Stentor											

- Not supported in the case of function `TRouteCall` on a Virtual Routing Point: a Routing Point can be simulated using a hunt group with calls being deflected or transferred from the hunt-group member when routing. When a two-step (typically mute) transfer is used on such a hunt-group member, `CallID` and `ANI` usually change; thus, the `direct-callid` and `direct-ani` types do not work.
- Not supported in the case of function `TSingleStepTransfer` when the T-Server service is simulated using a two-step transfer to the switch. In this case, `CallID` and `ANI` change; thus, the `direct-callid` and `direct-ani` types do not work.
- Not supported if two T-Servers are connected to different nodes.
- There are some switch-specific limitations when assigning CSTA correlator data `UUUI` to a call.
- Supported only on ABCF trunks (Alcatel internal network).
- To use this transaction type, you must select the `Use Override` check box on the Advanced tab of the `DN Properties` dialog box.
- Supported only for `TRouteCall` requests made from a Native Routing Point.
- Not supported if a `TMakeCall` request is made.
- Not supported if a `TInitiateTransfer` or `TInitiateConference` request is made from an outgoing call on a device.
- SIP Server supports the `direct-uuui` type.

## Transfer Connect Service Feature

The Transfer Connect Service (TCS) feature supports transfer connect services available on some telephony networks. When this feature is enabled, ISCC passes user data to remote locations to which calls are transferred or conferenced using transfer connect services.

---

## Procedure: Activating Transfer Connect Service

### Start of procedure

1. Open the T-Server Application's Properties dialog box.
2. Click the Options tab.
3. Set the tcs-use configuration option to always.
4. Set the tcs-queue configuration option to the number of a DN on the origination switch.

ISCC uses this DN as an intermediate step when sending calls to the remote location. The DN that is configured as tcs-queue receives attached data indicating the Feature Access Code (FAC) needed to reach the remote site. After a call is directed to the DN with data, a monitoring application takes the data and generates the required DTMF (dual-tone multifrequency) tones to redirect the call through the network to the remote location.

5. When you are finished, click Apply.
6. Click OK to save your changes and exit the Properties dialog box.

### End of procedure

---

**Note:** With T-Server for Avaya Communication Manager, you can use `RequestRouteCall` with `RouteTypeOverwriteDNIS` to initiate the playing of DTMF tones. This is done through the use of another intermediate DN (typically, an announcement port configured to give the silent treatment), to which the call is routed. When the call is established on this DN, T-Server requests that the digits sent in the DNIS field of the `TRequestRouteCall` be played by using the `ASAI-send-DTMF-single` procedure.

---

---

## ISCC/Call Overflow Feature

The Inter Server Call Control/Call Overflow (ISCC/COF) feature of T-Server, that supports *passive external routing*, is specifically designed to handle calls delivered between sites without an explicitly defined destination location. Such scenarios include contact center overflows and manual call transfers.

An *overflow situation* occurs when a call comes into a contact center where all agents are currently busy. In this situation, the switch can transfer (overflow) the incoming call to another site where there is an available agent.

T-Server uses two methods to handle call overflow and manual transfer scenarios. The first method is based on `NetworkCallID` matching and the second method is based on `ANI/OtherDN` matching.

When connected to each other via switch-specific networks, switches of some types can pass additional information along with transferred calls. This information may contain the `NetworkCallID` of a call, which is a networkwide unique identifier of the call.

When connected via a regular PSTN, switches of all types can send the `ANI` and/or `OtherDN` attributes to the destination switch during any call transfer operation.

While all T-Servers support the ISCC/COF feature using the `ANI` and/or `OtherDN` attributes, only a few support this feature using the `NetworkCallID` attribute. Table 3 shows the T-Server types that provide the `NetworkCallID` of a call.

**Table 3: T-Server Support of NetworkCallID for ISCC/COF Feature**

T-Server Type	Supported NetworkCallID Attribute
Alcatel A4400/OXE <sup>a</sup>	Yes
Aspect ACD	Yes
Avaya Communication Manager <sup>a,b</sup>	Yes
Avaya TSAPI <sup>a,b</sup>	Yes
Cisco UCCE	Yes
Mitel MiTAI <sup>a</sup>	Yes
Nortel Communication Server 2000/2100 <sup>a</sup>	Yes
Nortel Communication Server 1000 with SCCS/MLS <sup>a</sup>	Yes
SIP Server <sup>a</sup>	Yes
Spectrum	Yes

a. Supported only if the `match-flexible` configuration parameter is used.

b. ISCC/COF is cross-compatible between T-Server for Avaya Communication Manager and T-Server for Avaya TSAPI.

The ISCC/COF feature can use any of the three attributes (`NetworkCallID`, `ANI`, or `OtherDN`) as criteria for matching the arriving call with an existing call at another location. Consequently, the attribute that is used determines what

ConnID, UserData, CallType, and CallHistory are received for the matched call from the call's previous location.

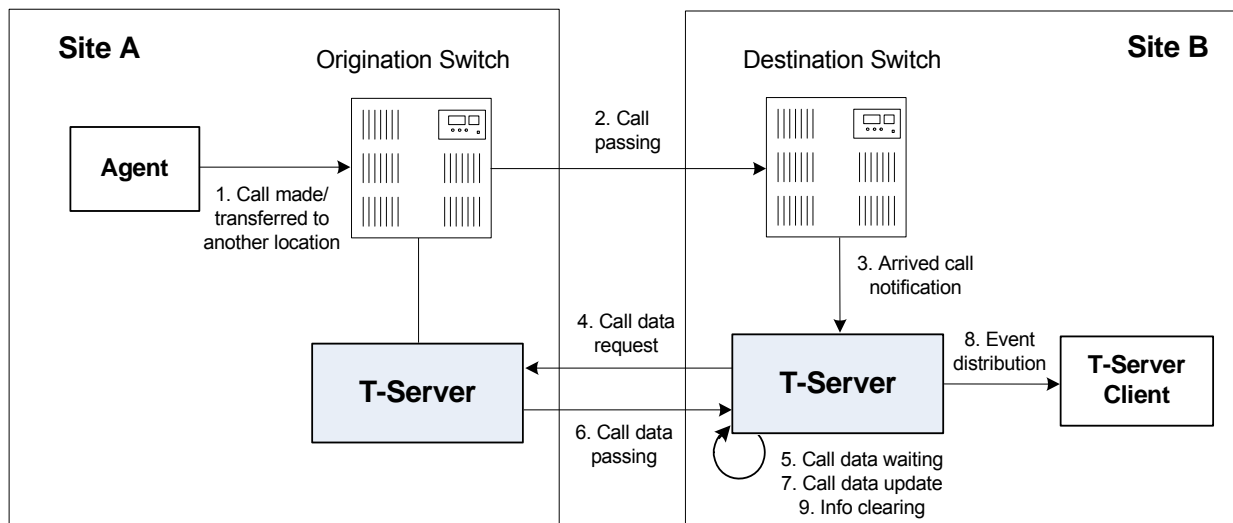
**Warning!** Depending on the switch platform, it may be possible to inherit the ANI attribute after routing a call to a remote destination, and after performing a single-step transfer and other telephone actions. However, ISCC/COF works properly only in scenarios where the ANI attribute on the destination T-Server is represented by exactly the same unique digit string as on the origination T-Server.

Typically, the ANI attribute represents the original call identifier (customer phone number), which guarantees that the attribute remains unique.

**Note:** When the ISCC/COF feature is in use, the Number Translation feature becomes active. For more information on feature configuration, see “Number Translation Feature” on [page 64](#).

## ISCC/COF Call Flow

[Figure 10](#) shows the sequence of steps that occur in an ISCC/COF scenario when a call is made or transferred by an agent at Site A to a DN at Site B, or when a call is overflowed from Site A to Site B.



**Figure 10: Steps in the ISCC/COF Process**

### Step 1

An agent makes or transfers a call manually to another location or a call is overflowed from Site A (origination location) to Site B (destination location).



## Step 2

Switch A (the origination switch) passes the call to Switch B (the destination switch).

## Step 3

The call reaches the destination switch, which notifies the destination T-Server about the arrived call.

## Step 4

The destination T-Server verifies with remote locations whether the call overflowed at any of them.

To determine which calls to check as possibly having overflowed, T-Server relies on the Switch object and the presence of DNs on the Switch configured as the Access Resource type with the Resource Type set either to `cof-in` (COF-IN DNs) or to `cof-not-in` (COF-NOT-IN DNs):

T-Server skips an arriving call when one of following conditions is met:

- The call arrives at a DN configured as an Enabled COF-NOT-IN DN.
- COF-IN DNs are configured, but the call arrives at a DN other than one of the configured COF-IN DNs or to a COF-IN DN which is Disabled.

In all other cases, the call is checked for overflow.

To determine which location the call arrived from, T-Server checks the call type and checks whether the call has the `NetworkCallID`, `ANI`, or `OtherDN` attribute:

- If the call is not an inbound call, the request for call data is sent to all remote locations *except* those whose Switch Access Code has the ISCC Call Overflow Parameters property set to `inbound-only=true`.
- If the call of any type has the `NetworkCallID` attribute, the destination T-Server sends a request for call data to the remote locations of the same switch type as the destination location if their Switch Access Codes have the ISCC Call Overflow Parameters property set to `match-callid`.
- If the call of any type has the `ANI` or `OtherDN` attribute, the request for call data is sent to remote locations whose Switch Access Code has the ISCC Call Overflow Parameters property set to `match-ani`.

## Step 5

The destination T-Server waits (suspending events related to that call) for the call data from the remote T-Server for the time interval specified in the `cof-ci-req-tout` configuration option. Within this interval, T-Server holds any events related to the call. In addition, the `cof-ci-defer-delete` option on the origination T-Server establishes the time interval only after which that T-Server deletes the call information. And the `cof-ci-wait-all`, if set to `true`,

forces the origination T-Server to wait for responses related to possible call overflow situations before updating call data.

#### Step 6

The T-Server at the location from which the call was transferred or overflowed sends call data to the requesting T-Server.

#### Step 7

If a positive response to the call-data request is received, T-Server updates ConnID, UserData, CallType, and CallHistory, distributes all suspended events related to that call, and deletes all information regarding the transaction (Step 9).

#### Step 8

If the timeout set by `cof-ci-req-tout` expires, T-Server distributes all suspended events, and starts the timeout specified by the `cof-rci-tout` option. If a positive response is received within the timeout set by `cof-rci-tout`, T-Server updates the ConnID, UserData, CallType, and CallHistory, and notifies client applications by distributing `EventPartyChanged`.

#### Step 9

T-Server deletes all information regarding the transaction when one of these results occurs:

- The first positive response to the call-data request is received.
- Negative responses from all queried locations are received.
- The timeout specified by the `cof-rci-tout` option expires.

---

## Number Translation Feature

The Number Translation feature of T-Server extends the ISCC/COF and `direct-ani` transaction type functions to provide more flexibility for handling calls distributed across multiple sites. T-Server translates the input string (ANI string) into a number defined by the translation rules. This processing is called number translation. T-Servers participating in handling calls at multiple sites exchange the translated numbers in order to match the call instances.

The translation process involves two algorithms, one for rule selection and the other for the actual translation. Through the first algorithm, T-Server selects a rule that will be used for number translation. Through the second algorithm, T-Server translates the number according to the selected rule definition. See “Number Translation Rules” on [page 65](#) for more information on configuring rules for your environment.

Number translation occurs as follows:

1. The switch reports a number, typically via `AttributeANI`.
2. T-Server evaluates all configured inbound rules to determine which one is the best fit for the received number. The best fit is determined by comparing the length of, and the specific digits in, the input number with the inbound pattern of each configured rule. See “Rule Examples” on [page 70](#) for specific examples.
3. T-Server translates the number according to the selected rule.

To enable T-Server to translate numbers, you must perform specific configuration tasks that are associated with translation. See “Configuring Number Translation” on [page 72](#).

## Number Translation Rules

T-Server uses the number translation rules that you define in the T-Server configuration object in two ways:

- Rule selection—To determine which rule should be used for number translation
- Number translation—To transform the number according to the selected rule

### Using ABNF for Rules

The number translation rules must conform to the following syntax, represented using Augmented Backus-Naur Form (ABNF) notation. For more information about ABNF, see RFC 2234, “Augmented BNF for Syntax Specifications: ABNF.”

---

**Note:** The following notation explanations begin with the highest level notation. Each explanation includes the name of a component notation and a basic definition of each component that it contains. Some components require more detailed definitions, which are included later in this section.

---

#### Common Syntax Notations

Syntax notations common to many of these rules include:

- `*`—Indicates that 0 to an infinite number of the item following this symbol are acceptable.
- `1*`—Indicates that one repetition is required. For T-Server, only one instance is acceptable.
- `/`—Indicates that any of the items mentioned, or a combination of those items, is acceptable.

## Component Notations

Component notations include:

- `dialing-plan = *dialing-plan-rule`

where:

- `dialing-plan-rule` represents the name of the rule. Each rule must have a unique name. There are no other naming restrictions, and you do not need to model your names according to the examples in this chapter.

The rules are represented as separate options in the configuration. Also, fields from a rule are represented as parameters in a single option string.

- `rule = [name] in-pattern [out-pattern]`

where:

- `[name]` is the name for the rule option, for example, `rule-01`. In ABNF notation, the brackets `[]` indicate that 0 or 1 instance of the component is required. However, for T-Server, a name is required.
- `in-pattern` is the part of the rule to which T-Server looks when attempting to match the input number.
- `[out-pattern]` is the part of the rule that instructs T-Server on how to translate the input number into the required format. The brackets indicate that either 0 or 1 instance is required. You must create an `out-pattern` for number translation rules.
- `name = *( ALPHA / DIGIT / "-" )`

where:

- `ALPHA` indicates that letters can be used in the name for the rule option.
- `DIGIT` indicates that numbers can be used in the name for the rule option.
- `"-"` indicates that a dash (-) can also be used in the option name, for example, `rule-01`.
- `in-pattern = 1*(digit-part / abstract-group)`

where:

- `digit-part` represents numbers. T-Server uses this when selecting the most appropriate rule from the entire dialing plan.
- `abstract-group` represents one or more letters with each letter representing one or more numbers. T-Server uses this when transforming a dial string.

For example, `[1-9]` is the `digit-part` (representing a range of numbers) and `ABBB` is the `abstract-group` for `in-pattern=[1-9]ABBB`.

- `out-pattern = 1*(symbol-part / group-identifier) *param-part`

where:

- `symbol-part` represents digits, symbols, or a combination. Symbols are rarely used. They are not used in the United States.

- `group-identifier` are letters that represent groups of numbers. A letter in the `out-pattern` represents one or more digits, based on the number of times the letter is used in the `in-pattern`.
- `*param-part` represents an additional parameter, such as `phone-context`. Reminder: an asterisk means that 0 to an infinite number of these are acceptable.

For example, in rule-04; `in-pattern=1AAABBBCCC`; `out-pattern=91ABC`, 91 is the `symbol-part`; A, B, and C are `group-identifiers` in the `out-pattern`, each representing three digits, since there are three instances of each in the `in-pattern`.

---

Note: Prefix an `out-pattern` value with a plus sign (+) for the inbound rule when the output must be in a global form (E.164 format).

---

- `digit-part = digits / range / sequence`  
where:
  - `digits` are numbers 0 through 9.
  - `range` is a series of digits, for example, 1-3.
  - `sequence` is a set of digits.
- `symbol-part = digits / symbols`  
where:
  - `digits` are numbers 0 through 9.
  - `symbols` include such characters as +, -, and so on.
- `range = "[" digits "-" digits "]" group-identifier`  
where:
  - `"[" digits "-" digits "]"` represents the numeric range, for example, [1-2].
  - `group-identifier` represents the group to which the number range is applied.

For example, [1-2] applies to group identifier A for `in-pattern=[1-2]ABBB`. When T-Server evaluates the rule to determine if it matches the number, it examines whether the first digit of the number, identified as `group-identifier A`, is 1 or 2.

- `sequence = "[" 1*(digits [" , " ] ) "]" group-identifier`  
where:
  - `"[" 1*(digits [" , " ] ) "]"` represents a sequence of digits, separated by commas, and bracketed. T-Server requires that each digit set have the same number of digits. For example, in [415, 650] the sets have three digits.
  - `group-identifier` represents the group to which the number sequence is applied.

For example, in `in-pattern=1[415,650]A*B`, `[415,650]` applies to group-identifier A. When T-Server evaluates the rule to determine if it matches the number, it examines whether the three digits (group-identifier A) following the 1 in the number are 415 or 650.

- `abstract-group = fixed-length-group / flexible-length-group / entity` where:

- `fixed-length-group` specifies a group composed of a specific number of digits and determined by how many times the group identifier is included in the `in-pattern`. For example, for `in-pattern=1AAABBBCCCC`, there are three digits in group A and B but four in group C.

When you create an `out-pattern`, you include the group identifier only once because the `in-pattern` tells T-Server how many digits belong in that group. For example, `rule-04` (see [page 70](#)) is `in-pattern=1AAABBBCCCC; out-pattern=91ABC`.

- `flexible-length-group` specifies a group composed of 0 or more digits in the group represented by the group-identifier. For example, in `in-pattern=1[415,650]A*B`, `*B` represents the flexible length group containing the remaining digits in the number.
- `entity` represents digits defined for a specific purpose, for example, country code.

The component `abstract-group` is used only for the `in-pattern`.

- `fixed-length-group = 1*group-identifier`

See the earlier explanation under `abstract-group`.

- `flexible-length-group = "*" group-identifier`

See the earlier explanation under `abstract-group`.

- `entity = "#" entity-identifier group-identifier`

where:

- `"#"` indicates the start of a Country Code entity-identifier.
- `entity-identifier` must be the letter C which represents Country Code when preceded by a pound symbol (#). Any other letter following the # causes an error.
- `group-identifier` represents the Country Code group when preceded by #C.

The entity component is a special group that assumes some kind of predefined processing, such as the Country Code detection.

- `param-part = ";" param-name "=" param-value`

where:

- `";"` is a required separator element.
- `param-name` is the name of the parameter.
- `"="` is the next required element.
- `param-value` represents the value for `param-name`.

- `param-name = "ext" / "phone-context" / "dn"`  
where:
  - "ext" refers to extension.
  - "phone-context" represents the value of the phone-context option configured on the switch.
  - "dn" represents the directory number.
- `param-value = 1*ANYSYMBOL`  
where:
  - ANYSYMBOL represents any number, letter, or symbol with no restrictions.
- `group-identifier = ALPHA`
- `entity-identifier = ALPHA`
- `digits = 1*DIGIT`
- `symbols = 1*("-" / "+" / ")" / "(" / ".")`

## Recommendations for Rule Configuration

The configuration of rules for inbound numbers usually depends on the settings in the corresponding PBX. These settings often define the form in which the PBX notifies its client applications about the number from which an inbound call is coming.

As a general guideline, configure rules that define how to process calls from:

- Internal numbers.
- External numbers within the same local dialing area.
- External numbers within the same country.
- International numbers.

Rules for inbound numbers, typically for North American locations, might look like this:

1. Two rules to transform internal numbers (extensions):  
`name=rule-01; in-pattern=[1-9]ABBB; out-pattern=AB`  
`name=rule-02; in-pattern=[1-9]ABBBB; out-pattern=AB`
2. A rule to transform local area code numbers (in 333-1234 format in this example):  
`name=rule-03; in-pattern=[1-9]ABBBBBB; out-pattern=+1222AB`
3. A rule to transform U.S. numbers (in +1(222)333-4444 format):  
`name=rule-04; in-pattern=1AAAAAAAAA; out-pattern=+1A`
4. A rule to transform U.S. numbers without the +1 prefix (in (222)333-4444 format):  
`name=rule-05; in-pattern=[2-9]ABBBBBBBB; out-pattern=+1AB`

5. A rule to transform U.S. numbers with an outside prefix (in 9 +1(222)333-4444 format):  
name=rule-06; in-pattern=91AAAAAAAAA; out-pattern=+1A
6. A rule to transform international numbers with an IDD (international dialing digits) prefix (in 011 +44(111)222-3333 format):  
name=rule-07; in-pattern=011\*A; out-pattern=+A
7. A rule to transform international numbers without an IDD prefix (in +44(111)222-3333 format):  
name=rule-08; in-pattern=[2-9]A\*B; out-pattern=+AB

## Rule Examples

This section provides examples of six rules that are configured as options in the Genesys Configuration Database. It also provides examples of how T-Server applies rules to various input numbers.

### Rules

- rule-01** in-pattern=[1-8]ABBB; out-pattern=AB
- rule-02** in-pattern=AAAA; out-pattern=A
- rule-03** in-pattern=1[415,650]A\*B; out-pattern=B
- rule-04** in-pattern=1AAABBBCCCC; out-pattern=91ABC
- rule-05** in-pattern=\*A913BBBB; out-pattern=80407913B
- rule-06** in-pattern=011#CA\*B; out-pattern=9011AB

### Examples

Here are examples of how T-Server applies configured above rules to various input numbers.

**Example 1** T-Server receives input number 2326.

As a result of the rule selection process, T-Server determines that the matching rule is rule-01:

```
name=rule-01; in-pattern=[1-8]ABBB; out-pattern=AB
```

The matching count for this rule is 1, because Group A matches the digit 2.

As a result of the parsing process, T-Server detects two groups: Group A = 2 and Group B = 326.

T-Server formats the output string as 2326.

**Example 2** T-Server receives input number 9122.

As a result of the rule selection process, T-Server determines that the matching rule is rule-02:

```
name=rule-02; in-pattern=AAAA; out-pattern=A
```



The matching count for this rule is 0; however, the overall length of the input number matches that of the in-pattern configuration.

As a result of the parsing process, T-Server detects one group: Group A = 9122.

T-Server formats the output string as 9122.

**Example 3** T-Server receives input number 16503222332.

As a result of the rule selection process, T-Server determines that the matching rule is rule-03:

name=rule-03; in-pattern=1[415, 650]A\*B; out-pattern=B

The matching count for this rule is 4, because the first digit matches and all three digits in Group A match.

As a result of the parsing process, T-Server detects two groups: Group A = 650 and Group B = 3222332.

T-Server formats the output string as 3222332.

**Example 4** T-Server receives input number 19253227676.

As a result of the rule selection process, T-Server determines that the matching rule is rule-04:

name=rule-04; in-pattern=1AAABBBCCCC; out-pattern=91ABC

The matching count for this rule is 1, because the first digit matches.

As a result of parsing process, T-Server detects three groups: Group A = 925, Group B = 322, and Group C = 7676.

T-Server formats the output string as 919253227676.

**Example 5** T-Server receives input number 4089137676.

As a result of rule selection process, T-Server determines that the matching rule is rule-05:

name=rule-05; in-pattern=\*A913BBBB; out-pattern=80407913B

The matching count for this rule is 3, because three digits match.

As a result of the parsing process, T-Server detects two groups: Group A = 408 and Group B = 7676.

T-Server formats the output string as 804079137676.

**Example 6** T-Server receives input number 011441112223333.

As a result of the rule selection process, T-Server determines that the matching rule is rule-06:

name=rule-06; in-pattern=011#CA\*B; out-pattern=9011AB

The matching count for this rule is 3, because three digits match.

As a result of the parsing process, T-Server detects two groups: Group A = 44 and Group B = 1112223333.

T-Server formats the output string as 9011441112223333.

---

## Procedure: Configuring Number Translation

**Purpose:** To configure the Number Translation feature in T-Server to provide more flexibility for handling calls distributed across multiple sites.

### Overview

- The Number Translation feature becomes active when the ISCC/COF feature and/or the direct-ani transaction type are used.
- This configuration procedure must be completed within the T-Server Application object corresponding to your T-Server.

### Start of procedure

1. Open the T-Server Application's Properties dialog box.
2. Click the Options tab.
3. Create a new section called extrouter or open an existing section with this name.
4. Create a new option called inbound-translator-⟨n⟩. This option points to another section that describes the translation rules for inbound numbers.
5. In this section, create one configuration option for each rule. Specify the rule name as the option name. The values of these options are the rules for the number translation.
6. When you are finished, click Apply.
7. Click OK to save your changes and exit the Properties dialog box.

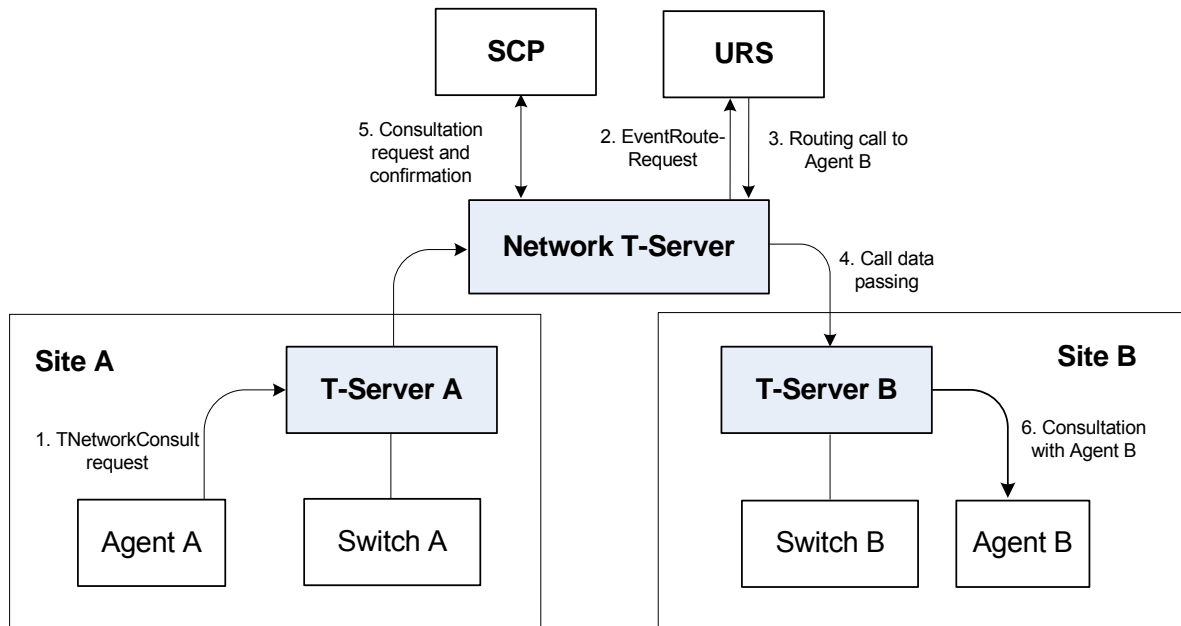
### End of procedure

---

## Network Attended Transfer/Conference Feature

The Network Attended Transfer/Conference (NAT/C) feature is designed to enable agents working in multi-site contact centers to consult with each other before making call transfers or conferences, regardless of whether both agents work at the same or different sites. It also enables the agent who requests a consultation to maintain his or her conversation with the customer while the system is looking for an available agent and setting up the consultation call. The NAT/C feature does not rely on the call transfer capabilities of the local switch.

There are two modes in which the network attended transfer/conference can be performed: *direct* and *URS-controlled*. Figure 11 shows the sequence of steps that occur in *URS-controlled* mode, when Agent A, who is handling a customer call, requests a consultation with another agent, and URS (Universal Routing Server) selects Agent B, who is working at another site. The *direct* mode is similar to the *URS-controlled* mode, with the difference that URS is not involved in the process (Step 2 and Step 3 are omitted).



**Figure 11: Steps in the NAT/C Process in URS-Controlled Mode**

### Step 1

Agent A makes a request for a consultation with another agent. A `TNetworkConsult` request is relayed to the Network T-Server. Depending on the parameter settings of the `TNetworkConsult` request, the NAT/C feature will operate in either *direct* or *URS-controlled* mode. For more information, see the *Voice Platform SDK 8.x .NET (or Java) API Reference*.

### Step 2

(*URS-controlled* mode only.) The Network T-Server sends `EventRouteRequest` to URS.

### Step 3

(*URS-controlled* mode only.) URS locates an available agent at Site B and instructs the Network T-Server to route the call to Agent B. The Network T-Server confirms the initiation of the network transfer by sending `EventNetworkCallStatus` to T-Server A, which then relays it to Agent A.

#### Step 4

The Network T-Server proceeds to obtain the access number from T-Server B, and passes the call data to T-Server B. (See “ISCC Call Data Transfer Service” on [page 41](#) for details.)

#### Step 5

The Network T-Server instructs the Service Control Point (SCP) to initiate a new voice path with Agent B. Once the connection is confirmed, the Network T-Server distributes `EventNetworkCallStatus` to both T-Server A and T-Server B, which then relay it to Agent A and Agent B respectively, to indicate that the consultation call is being established.

The Network T-Server also distributes `EventRouteUsed` to URS to confirm successful routing of the call to the selected agent.

#### Step 6

At this point, the customer is on hold, and Agent A is consulting with Agent B. Agent A can do one of the following:

- End the consultation and retrieve the original customer call
- Alternate between Agent B and the customer
- Set up a conference call with Agent B and the customer
- Transfer the customer call to Agent B

---

Note: All T-Servers support NAT/C requests with `AttributeHomeLocation` provided that this attribute identifies a network location that is capable of processing such requests. Refer to the *Network T-Server Deployment Guides* to determine whether a specific Network T-Server can process these requests.

---

---

## Event Propagation Feature

The Event Propagation feature complements the ISCC and ISCC/COF features by distributing updated user data and party-related events to remote T-Servers. This feature is used when a call is being made, transferred, or conferenced to another location, and when, as a result, one or more instances of the call reside at one location while other call instances reside at another location. In this scenario, when a client at one location makes changes to user data, updated user data is passed (*propagated*) to T-Servers at other locations.

The Event Propagation feature consists of User Data update propagation and Party Events propagation.

## User Data Propagation

User data propagation takes place when a client at one location makes changes to user data associated with a call that was made, transferred, conferenced, or routed to other locations. The remote clients involved with the call are notified about the changes with `EventAttachedDataChanged`.

When T-Server receives a local update to user data (that is, when a client of this T-Server has changed the call's user data), T-Server determines if parties at remote locations are involved with the call and, if so, sends (propagates) the updated user data to the T-Servers at remote locations.

When T-Server receives a remote update to user data (that is, when a client of a remote T-Server has changed the call's user data and the remote T-Server has used the Event Propagation feature to send the updated user data), T-Server:

1. Updates the user data of the corresponding local call.
2. Determines if parties at other remote locations are involved with the call and, if so, propagates the updated user data to T-Servers at other remote locations.

The locations to which user data is propagated are selected based on a call distribution topology. That is, the updated user data is passed directly to the location to which a call was sent and to the location from which the call was received, excluding the location from which the update was received.

For example, consider a call made from location A to location B, and then conferenced from location B to location C. The three instances of the call reside at different locations: the first instance is at location A, the second instance is at location B, and the third instance is at location C. The Event Propagation feature is employed in the following scenarios:

- When T-Server at location A receives a local update to user data, it notifies T-Server at location B (to which it sent the call) about changes to the call's user data. Thus, T-Server at location B receives a remote update to user data and, in turn, notifies T-Server at location C (to which it sent the call) about these changes.

Although T-Server at location C receives a remote update to user data, it does not pass the notification to any other T-Servers, because it did not send the call to any other locations. As mentioned earlier, T-Servers at locations B and C update the user data of the corresponding local calls and notify their clients about the changes with `EventAttachedDataChanged`.

- When T-Server at location B receives a local update to user data, it notifies T-Server at location C (to which it sent the call) and T-Server at location A (from which it received the call) about changes to the call's user data. Thus, T-Servers at locations C and A receive a remote update to user data. Because T-Server at location C did not send the call to any other locations, and T-Server at location A originated the call, neither of these T-Servers passes the notification to any other T-Servers. T-Servers at locations C and

A update the user data of the corresponding local calls and notify their clients about the changes with `EventAttachedDataChanged`.

- When T-Server at location C receives a local update to user data, it notifies T-Server at location B (from which it received the call) about changes to the call's user data. Thus, T-Server at location B receives a remote update to user data and, in turn, notifies T-Server at location A (from which it received the call) about these changes.

Although T-Server at location A receives a remote update to user data, it does not pass the notification to any other T-Servers, because it originated the call. T-Servers at locations B and A update the user data of the corresponding local calls and notify their clients about the changes with `EventAttachedDataChanged`.

When a call is distributed between location A and location C using location B, and is then deleted on location B, propagation between locations A and C still occurs through the transit node at location B.

## Party Events Propagation

Party events propagation takes place when a transfer or a conference is completed for a call that was made to or from one or more remote locations, or when a conference party is removed from the conference.

In these cases, the Event Propagation feature distributes party events, such as `EventPartyChanged`, `EventPartyAdded`, and `EventPartyDeleted`, to remote locations involved with the call, according to appropriate call model scenarios.

For example, consider a call made from DN 1 to DN 2 on location A. A `TInitiateConference` request is then issued for DN 2 to transfer the call to external DN 3 on location B. That transfer is made by means of ISCC routing. When this conference is completed on location A, the Event Propagation feature sends `EventPartyChanged` to location B and distributes this event to involved client applications that are connected to location B and registered for DN 3. After that, if a party of the conference is removed from the conference (for example, a party on DN 2), the Event Propagation feature sends `EventPartyDeleted` to location B and distributes this event to client applications registered for DN 3.

If a call involved in the propagation has no local parties but has two or more remote parties, the party events propagation is processed in the same manner as the propagation of user data updates.

For a complete event flow in such scenarios, refer to the *Genesys Events and Models Reference Manual*.

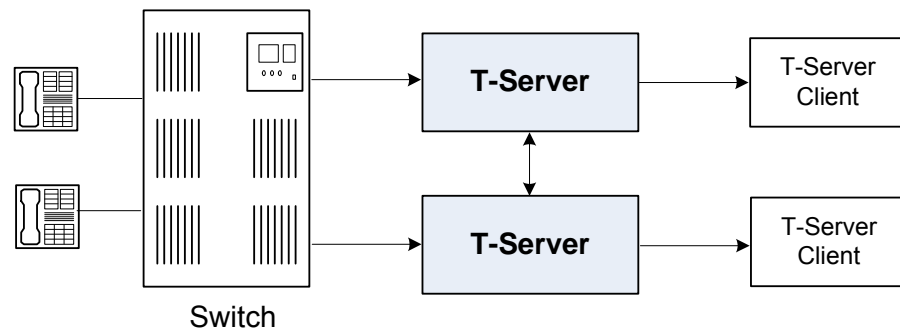
## Switch Partitioning

A multi-site environment with switch partitioning or intelligent trunks can be defined as a configuration of multiple virtual switches (or `Switch` objects) that

are defined in Configuration Manager under a single Switching Office object representing a physical switch. Each Switch object has its own instance of a T-Server application. All T-Server applications connect to the switch via the same or different CTI link or a gateway. (See [Figure 12.](#))

When the Event Propagation feature is active, updated user data and party-related events—`EventPartyChanged`, `EventPartyDeleted`, and `EventPartyAdded`—are propagated to T-Servers that are involved in call transactions, such as transfer or conference. However, with switch partitioning, the call instances may reside at one partition or at different partitions.

### Site A



**Figure 12: Switch Partitioning Architecture**

Starting with version 8.0, in addition to `ConnIDs` and `UserData`, T-Server can synchronize the `CallType` attribute. Each T-Server is required to register all DNs it monitors. In a multi-partitioned environment, when configured, calls between partitions are reported as internal (`CallTypeInternal`). In a non-partitioned environment, such calls are reported as inbound (`CallTypeInbound`) and/or outbound (`CallTypeOutbound`), depending on the direction of a call. In order for T-Servers to report calls between specified partitions as internal, registered DNs of these partitions must be assigned to a Switch (T-Server), Switching Office, or Tenant, using the `dn-scope` configuration option. If DNs that are involved in calls are not in the T-Server scope, those DNs will be reported as inbound or outbound.

In addition, T-Server supports `LocalCallType` and `PropagatedCallType` attributes, which depend on the `propagated-call-type` configuration option setting for reporting.

To control race conditions that may occur in the switch-partitioned environment, use the `epp-tout` configuration option.

Notes: Because of possible delays in TCP/IP connections, a sequence of events sent for the same call by two or more T-Servers to clients may appear in an unexpected order. For example, in a simple call scenario with two partitions, `EventRinging` and `EventEstablished` messages may both arrive before `EventDialing`.

Genesys switch partitioning does not apply to hardware partitioning functionality that is supported on some switches.

Table 4 shows the T-Server types that support switch partitioning.

**Table 4: T-Server Support for Switch Partitioning**

T-Server Type	Supported
Alcatel A4400/OXE	Yes
Avaya Communication Manager	Yes
Avaya TSAPI	Yes
Cisco Unified Communications Manager	Yes
SIP Server	Yes

## Event Propagation Configuration

The basic Event Propagation feature configuration includes a setting of specific configuration options at a T-Server Application level. The advanced feature configuration allows you to customize the feature at a Switch level.

When determining whether to notify other T-Servers of changes to user data, or to distribute party events, T-Server checks:

1. Call topology (what location a call came from and to what location the call was then transferred or conferenced).
2. Outbound parameters of the Switch this T-Server relates to (whether propagation parameters are configured for the access codes this switch uses to reach the switch at the location a call came from and the switch at the location to which the call was then transferred or conferenced).

**Warning!** The direction of user-data or party-events propagation does not necessarily match the direction of call distribution. Therefore, the access code used to deliver the call can differ from the access code used for the purpose of Event Propagation.



If one of the T-Servers along the call distribution path has the Event Propagation feature disabled, that T-Server does not distribute events to remote locations.

---

**Procedure:****Activating Event Propagation: basic configuration**

**Purpose:** To activate the Event Propagation feature for User Data updates and call-party-associated events (Party Events) distribution.

**Start of procedure**

1. Open the T-Server Application's Properties dialog box.
2. Click the Options tab.
3. Open the extrouter section.
4. Set the event-propagation option to the list value.  
This setting enables User Data propagation. If you need to enable Party Events propagation, perform Step 5.
5. Set the use-data-from option to the current value.  
This setting enables Party Events propagation.  
For the option description and its valid values, see the “T-Server Common Configuration Options” chapter.
6. When you are finished, click Apply.
7. Click OK to save your changes and exit the Properties dialog box.

**End of procedure****Next Steps**

- For advanced feature configuration, do the following procedure:  
[Procedure: Modifying Event Propagation: advanced configuration](#), on page 79

---

**Procedure:****Modifying Event Propagation: advanced configuration**

**Purpose:** To modify access codes for advanced Event Propagation configuration.

## Prerequisites

- [Procedure: Activating Event Propagation: basic configuration, on page 79](#)

## Overview

You can set Event Propagation parameters using:

- The Default Access Code properties of the Switch that receives an ISCC-routed call (the destination switch).
- The Access Code properties of the Switch that passes an ISCC-routed call (the origination switch).

If you do not set up Event Propagation parameters for a given Access Code, T-Server uses corresponding settings configured for the Default Access Code of the destination switch.

The procedures for modifying Default Access Codes and Access Codes are very similar to each other.

## Start of procedure

1. Among configured Switches, select the Switch that the configured T-Server relates to.
2. Open the Switch's Properties dialog box and click either the Default Access Codes tab or the Access Codes tab.
3. Select a configured Default Access Code or configured Access Code and click Edit.

---

Note: If no Default Access Code is configured, see [page 84](#) for instructions. If no Access Codes are configured, see [page 85](#) for instructions.

---

4. In the Switch Access Code Properties dialog box that opens, specify a value for the ISCC Protocol Parameters field as follows:
  - To enable distribution of both user data associated with the call and call-party-associated events<sup>1</sup>, type:  
propagate=yes  
which is the default value.
  - To enable distribution of user data associated with the call and disable distribution of call-party-associated events, type:  
propagate=udata
  - To disable distribution of user data associated with the call and enable distribution of call-party-associated events, type:

- 
1. The following are call-party-associated events: EventPartyChanged, EventPartyDeleted, and EventPartyAdded.

`propagate=party`

- To disable distribution of both user data associated with the call and call-party-associated events, type:

`propagate=no`

5. Click OK to save configuration updates and close the Switch Access Code Properties dialog box.
6. Click Apply and OK to save configuration updates and close the Switch Properties dialog box.

End of procedure

---

## ISCC Transaction Monitoring Feature

This feature allows T-Server clients to monitor ISCC transactions that occur during the call data transfer between T-Servers in a multi-site environment.

In order to be able to monitor ISCC messaging, a T-Server client must subscribe to the ISCC Transaction Monitoring. Once a subscription request is confirmed, a client will receive updates about all multi-site operations of this T-Server.

The `TTransactionMonitoring` request is used to instruct T-Server to start, stop, or modify a client's subscription to Transaction Monitoring feature notifications by setting the `TSubscriptionOperationType` parameter to `SubscriptionStart`, `SubscriptionStop`, or `SubscriptionModify` respectively. The transaction status is reported in `EventTransactionStatus` messages to the subscribed clients.

To determine whether the Transaction Monitoring feature is supported by a specific T-Server, a T-Server client may query T-Server's capabilities. For more information about support of this feature, see *Genesys Events and Models Reference Manual* and *Voice Platform SDK 8.x .NET (or Java) API Reference*.

---

## Configuring Multi-Site Support

Prior to configuring T-Server to support multi-site operation, you must read the "Licensing Requirements" on [page 15](#), as well as previous sections of this chapter on multi-site deployment. In particular, Table 2 on [page 56](#) shows which transaction types are supported by a specific T-Server, while Table 3 on [page 61](#) shows whether your T-Server supports the `NetworkCallID` attribute for

the ISCC/COF feature. Use this information as you follow the instructions in this chapter.

---

**Note:** Before attempting to configure a multi-site environment, Genesys recommends that you plan the changes you want to make to your existing contact centers. You should then gather the configuration information you will need (such as the name of each T-Server application, port assignments, and switch names), and use Configuration Manager to create and partially configure each T-Server object. Review option values in the *extrouter* section and determine what these values need to be, based on your network topology.

---

For T-Server to support multi-site operation, you must create and configure three types of objects in the Configuration Layer:

1. Applications
2. Switches, including Access Codes
3. DNSs

You must configure these objects for origination and destination locations. Multi-site support features activate automatically at T-Server startup. See “DNSs” on [page 89](#) for details.

## Applications

Ensure that T-Server Application objects, and their corresponding Host objects, exist and are configured for origination and destination locations.

Once you’ve done that, use Configuration Manager to add this configuration to a T-Server Application.

---

### Procedure: Configuring T-Server Applications

**Purpose:** To configure T-Server Application objects for multi-site operation support.

Start of procedure

1. Open the T-Server Application's Properties dialog box.
2. Click the Connections tab and click Add to add a connection to the appropriate T-Server. The Connection Info Properties dialog box displays.
3. Use the Browse button to search for the T-Server you want to connect to, and fill in the following values:
  - Port ID
  - Connection Protocol

- Local Timeout
  - Remote Timeout
  - Trace Mode
4. Click the Options tab. Create a new section called extrouter or open an existing section with this name.

---

Note: If you do not create the extrouter section, T-Server uses the default values of the corresponding configuration options.

---

5. Open the extrouter section. Configure the options used for multi-site support.
6. When you are finished, click Apply.
7. Repeat this procedure for all T-Servers for origination and destination locations that are used for multi-site operations.

End of procedure

Next Steps

- See [“Switches and Access Codes.”](#)

## Switches and Access Codes

Ensure that Switching Office and Switch objects are configured for both origination and destination locations.

You configure Access Codes to a destination switch in the origination Switch's Properties dialog box. The only exception is the Default Access Code, which is configured at the destination Switch's Properties dialog box.

You can configure two types of switch Access Codes in the Switch's Properties dialog box:

- A Default Access Code (for inbound calls)—Specifies the access code that other switches can use to access this switch when they originate a multi-site transaction.
- An Access Code (for outbound calls)—Specifies the access code that this switch can use when it originates a multi-site transaction to access another switch.

When the origination T-Server processes a multi-site transaction, it looks for an access code to the destination switch. First, T-Server checks the Access Code of the origination Switch:

- If an access code to the destination switch is configured with the target type Target ISCC and with any transaction type except Forbidden, T-Server uses this access code to dial the destination switch.

- If the access code to the destination switch is not configured on the Access Code tab of the origination switch, the origination T-Server checks the Default Access Code tab of the destination switch. If an access code is configured there with the target type Target ISCC and with any transaction type except Forbidden, T-Server uses this access code to dial the destination switch.
- If no access code with the required properties is found, T-Server rejects the transaction.

---

Note: When migrating from previous releases of T-Servers to 8.1, or when using T-Servers of different releases (including 8.1) in the same environment, see “Compatibility Notes” on [page 88](#).

---

---

## Procedure: Configuring Default Access Codes

**Purpose:** To configure the Default Access Codes (one per Switch object) to be used by other switches to access this switch when they originate a multi-site transaction.

### Prerequisites

- Ensure that Switching Office and Switch objects are configured for both origination and destination locations.

### Start of procedure

1. Among configured Switches, select the Switch that the configured T-Server relates to.
2. Open the Switch Properties dialog box and click the Default Access Codes tab.
3. Click Add to open the Access Code Properties dialog box.
4. In the Code field, specify the access code used by remote switches to reach a DN at this switch. An access code is used as a prefix to the remote switch numbers.

---

Note: If no prefix is needed to dial to the configured switch, you can leave the Code field blank.

---

5. In the Target Type field, select Target ISCC.
6. In the Route Type field, select a value corresponding to the transaction type you want to use (given that it is supported for your switch type).

7. When you are finished, click Apply.

End of procedure

Next Steps

- See [“Configuring Access Codes.”](#)

---

## Procedure: Configuring Access Codes

**Purpose:** To configure the Access Codes (one or more per Switch object) that this switch can use when it originates a multi-site transaction to access another switch.

Prerequisites

- Ensure that Switching Office and Switch objects are configured for both origination and destination locations.

Start of procedure

1. Among configured Switches, select the Switch that the configured T-Server relates to.
2. Open the Switch Properties dialog box and click the Access Codes tab.
3. Click Add to open the Access Code Properties dialog box.
4. In the Switch field, specify the switch that this switch can reach using this access code. Use the Browse button to locate the remote switch.
5. In the Code field, specify the access code used to reach a DN at the remote switch from this switch. An access code is used as a prefix to the remote switch numbers.

---

**Note:** If no prefix is needed to dial from one switch to another, you can leave the Code field blank.

---

6. In the Target Type field, select Target ISCC.

When you select Target ISCC as your target type, the Properties dialog box changes its lower pane to the Sources pane. It is here that you enter the extended parameters for your access codes, by specifying the ISCC Protocol and ISCC Call Overflow Parameters.

To set these parameters, locate the two drop-down boxes that appear below the **Target Type** field in the **Sources** pane of that **Properties** dialog box.

- a. In the **ISCC Protocol Parameters** drop-down box, enter the appropriate ISCC Protocol parameter, as a comma-separated list of one or more of the following items shown in [Table 5](#):

**Table 5: Target Type: ISCC Protocol Parameters**

ISCC Protocol Parameters	Description
dnis-tail=<number-of-digits>	Where <code>number-of-digits</code> is the number of significant DNIS digits (last digits) used for call matching. <code>0</code> (zero) matches all digits.
propagate=<yes, udata, party, no>	Default is <code>yes</code> . For more information, see “Modifying Event Propagation: advanced configuration” on <a href="#">page 79</a> .
direct-network-callid=<>	Use <a href="#">Table 3</a> on <a href="#">page 61</a> to determine if your T-Server supports the <code>direct-network-callid</code> transaction type.

- b. In the **ISCC Call Overflow Parameters** drop-down box, enter call overflow parameters, as a comma-separated list of one or more of the following items shown in [Table 6](#):

**Table 6: Target Type: ISCC Call Overflow Parameters**

ISCC Call Overflow Parameters	Description
match-callid	Matches calls using network <code>CallID</code> .
match-ani	Matches calls using ANI. <b>Note:</b> When using <code>match-ani</code> , the <code>match-flexible</code> parameter must be set to <code>false</code> .



**Table 6: Target Type: ISCC Call Overflow Parameters (Continued)**

ISCC Call Overflow Parameters	Description
match-flexible	Supports flexible call matching based on the following values: Default Value: true Valid Values: true, false, and [matching-context-type], where [matching-context-type] is the switch-specific value, which must be the same as the value of the default-network-call-id-matching configuration option of the corresponding T-Server.
inbound-only=<boolean>	Default is true. Setting inbound-only to true disables COF on consultation and outbound calls.

7. In the Route Type field, select a value corresponding to the transaction type you want to use (given that it is supported for your switch type). [Table 7](#) contains cross-reference information on transaction types that the Configuration Layer and T-Server use.

**Table 7: Route Type and ISCC Transaction Type Cross-Reference**

Route Type Field Value	ISCC Transaction Type
Default	The first value from the list of values specified in the cast-type option for the T-Server at the destination site
Direct	direct-callid
Direct ANI	direct-ani
Direct Digits	direct-digits
Direct DNIS and ANI	Reserved
Direct Network Call ID	direct-network-callid
Direct No Token	direct-notoken
Direct UII	direct-uuu
DNIS Pooling	dnis-pooling

**Table 7: Route Type and ISCC Transaction Type Cross-Reference (Continued)**

Route Type Field Value	ISCC Transaction Type
Forbidden	External routing to this destination is not allowed
ISCC defined protocol	Reserved
PullBack	pullback
Re-Route	reroute
Route	route

8. When you are finished, click **Apply**.

End of procedure

#### Next Steps

- After configuring a switch for multi-site support, proceed with the configuration of DNs assigned to this switch.

## Compatibility Notes

When migrating from previous releases of T-Servers to 8.1, or when using T-Servers of different releases (including 8.1) in the same environment, keep in mind the following compatibility issues:

- The Target External Routing Point value of the Target Type field is obsolete and provided only for backward compatibility with T-Servers of releases 5.1 and 6.0. When two access codes for the same switch are configured, one with the Target ISCC target type and the other with the Target External Routing Point target type, T-Servers of releases 8.x, 7.x, 6.5, and 6.1:
  - Use the Target ISCC access code for transactions with T-Servers of releases 8.x, 7.x, 6.5, and 6.1.
  - Use the Target External Routing Point access code for transactions with T-Servers of releases 5.1 and 6.0.

When the only access code configured for a switch has the Target External Routing Point target type, T-Server uses this access code for all transactions.

- When the Target External Routing Point value of the Target Type field is configured, you must set the Route Type field to one of the following:
  - Default to enable the route transaction type
  - Label to enable the direct-ani transaction type

- Direct to enable the direct transaction type

---

Note: The direct transaction type in releases 5.1 and 6.0 corresponds to the direct-callid transaction type in releases 6.1 and later.

---

- UseExtProtocol to enable the direct-uu i transaction type
- PostFeature to enable the reroute transaction type

These values are fully compatible with the transaction types supported in T-Server release 5.1.

- For successful multi-site operations between any two locations served by release 5.1 T-Servers, identical Route Type values must be set in the Switch's Access Code Properties dialog boxes for both the origination and destination switches.

## DNs

Use the procedures from this section to configure access resources for various transaction types.

---

### Procedure: Configuring access resources for the route transaction type

**Purpose:** To configure dedicated DNs required for the route transaction type.

#### Prerequisites

- Ensure that Switching Office and Switch objects are configured for both origination and destination locations.

#### Start of procedure

1. Under a configured Switch, select the DNs folder. From the main menu, select File > New > DN to create a new DN object.
2. On the General tab of the DN's Properties dialog box, specify the number of the configured DN as the value of the Number field. This value must correspond to the Routing Point number on the switch.
3. Select External Routing Point as the value of the Type field.
4. If a dialable number for that Routing Point is different from its DN name, specify the number in the Association field.
5. Click the Access Numbers tab. Click Add and specify these access number parameters:
  - Origination switch.

- Access number that must be dialed to reach this DN from the origination switch.

In determining an access number for the Routing Point, T-Server composes it of the values of the following properties (in the order listed):

- Access number (if specified).
- Switch access code from the switch of the origination party to the switch to which the Routing Point belongs, concatenated with its Association (if the Association value is specified).
- Switch access code from the switch of the origination party to the switch to which the Routing Point belongs, concatenated with the number for the DN.
- Default access code of the switch to which the Routing Point belongs, concatenated with its Association (if the Association value is specified).
- Default access code of the switch to which the Routing Point belongs, concatenated with the number for the DN.

---

Note: If option `use-implicit-access-numbers` is set to true, the access number composed of switch access code and DN can be used for external transfers of calls originating at switches for which an access number is not specified.

---

- When you are finished, click Apply.

End of procedure

---

## Procedure:

### Configuring access resources for the dnis-pool transaction type

**Purpose:** To configure dedicated DNs required for the dnis-pool transaction type.

Start of procedure

- Under a configured Switch, select the DNs folder. From the main menu, select File > New > DN to create a new DN object.
- On the General tab of the DN's Properties dialog box, specify the number of the configured DN as the value of the Number field. This value must be a dialable number on the switch.
- Select Access Resource as the Type field and type dnis as the value of the Resource Type field on the Advanced tab.

4. Click the Access Numbers tab. Click Add and specify these Access Number parameters:
  - Origination switch.
  - Access number that must be dialed to reach this DN from the origination switch.

An access number for the access resource is determined in the same manner as for the route access resource.

5. When you are finished, click Apply.

End of procedure

---

### **Procedure:**

## **Configuring access resources for direct-\* transaction types**

Start of procedure

You can use any configured DN as an access resource for the direct-\* transaction types. (The \* symbol stands for any of the following: callid, uui, notoken, ani, or digits.)

You can select the Use Override check box on the Advanced tab to indicate whether the override value should be used instead of the number value to dial to the DN. You must specify this value if the DN has a different DN name and dialable number. In fact, this value is required for T-Servers for some switch types—such as Aspect ACD, Nortel Communication Server 2000/2100, and Spectrum.

End of procedure

---

### **Procedure:**

## **Configuring access resources for ISCC/COF**

**Purpose:** To configure dedicated DNs required for the ISCC/COF feature.

### Start of procedure

---

Note: Use Table 3 on [page 61](#) to determine if your T-Server supports the ISCC/COF feature.

---

1. Under a configured Switch, select the DNs folder. From the main menu, select **File > New > DN** to create a new DN object.
2. On the **General** tab of the **DN Properties** dialog box, enter the name of the configured DN in the **Number** field.

---

Note: The name of a DN of type **Access Resource** must match the name of a DN in your configuration environment (typically, a DN of type **Routing Point** or **ACD Queue**), so T-Server can determine whether the calls arriving at this DN are overflowed calls.

---

3. Select **Access Resource** as the value for the **Type** field.
4. On the **Advanced** tab, type **cof-in** or **cof-not-in** as the value for the **Resource Type** field.

---

Note: Calls coming to DNs with the **cof-not-in** value for the **Resource Type** are never considered to be overflowed.

---

5. When you are finished, click **Apply**.

### End of procedure

---

## Procedure: Configuring access resources for non-unique ANI

**Purpose:** To configure dedicated DNs required for the **non-unique-ani** resource type.

The **non-unique-ani** resource type is used to block **direct-ani** and **COF/ani** from relaying on ANI when it matches configured/enabled resource digits. Using **non-unique-ani**, T-Server checks every ANI against a list of **non-unique-ani** resources.

### Start of procedure

1. Under a configured Switch, select the DNs folder. From the main menu, select **File > New > DN** to create a new DN object.
2. On the **General** tab of the **DN Properties** dialog box, specify the ANI digits that need to be excluded from normal processing.

3. Select `Access Resource` as the value for the `Type` field.
4. On the `Advanced` tab, specify the `Resource Type` field as `non-unique-ani`.
5. When you are finished, click `Apply`.

End of procedure

---

## Procedure: Modifying DNs for isolated switch partitioning

**Purpose:** To modify DNs that belong to a particular partition where switch partitioning is used.

This configuration instructs T-Server to select an External Routing Point that has the same partition as the requested destination DN.

---

**Note:** When a target DN is not configured or has no configured partition name, T-Server allocates a DN of the External Routing Point type that belongs to any partition.

---

Start of procedure

1. Under a `Switch` object, select the `DNs` folder.
2. Open the `Properties` dialog box of a particular DN.
3. Click the `Annex` tab.
4. Create a new section named `TServer`.
5. Within that section, create a new option named `epn`. Set the option value to the partition name to which the DN belongs.
6. Repeat Steps 1–5 for all DNs, including DNs of the `External Routing Point` type, that belong to the same switch partition.
7. When you are finished, click `Apply`.

End of procedure

## Configuration Examples

This section provides two configuration examples and describes how the configuration settings affect T-Server's behavior.

### Multiple Transaction Types

This example demonstrates the difference in how ISCC directs a call when you specify two different transaction types (`route` and `direct-ani`).

In this example, you configure an origination and a destination switch for as described in “Switches and Access Codes” on [page 83](#).

1. Among configured Switches, select the origination Switch.
2. Open the Switch Properties dialog box and click the Default Access Codes tab.
3. Click Add to open the Access Code Properties dialog box.
4. Set the Access Code field to 9.
5. When you are finished, click Apply.
6. Among configured Switches, select the destination Switch.
7. Under the destination Switch, configure a DN as described in “Configuring access resources for the route transaction type” on [page 89](#).
8. Set the DN Number field to 5001234567.
9. Click the Advanced tab of this DN’s Properties dialog box.
10. Select the Use Override check box and enter 1234567 in the Use Override field.
11. When you are finished, click Apply or Save.
12. Use a T-Server client application to register for this new DN with the destination T-Server and, therefore, with the switch.
13. Request to route a call from any DN at the origination switch to the destination DN you have just configured:
  - If you are using the route ISCC transaction type, the client requests that T-Server deliver a call to a destination location using the DN number 5001234567. ISCC requests that the switch dial one of the external routing points at the destination location, using the value either of the Access Number field or of the Access Code field, which is 9, concatenated with the external routing point at the destination location. The call is routed to the DN number 5001234567.
  - If you are using the direct-ani ISCC transaction type, the client requests that T-Server deliver a call to a destination location using the DN number 1234567, which is the Use Override value. ISCC requests that the switch dial 91234567, which is a combination of the Switch Access Code value and the Use Override value. The destination T-Server is waiting for the call to directly arrive at DN number 5001234567.

## Call Overflow Methods

This section demonstrates how to indicate which overflow methods a switch supports.

In this example, for T-Server to use ANI/OtherDN matching in call overflow and manual transfer scenarios, set the ISCC Call Overflow Parameters to:

```
match-ani, inbound-only=true
```



when configuring Switch Access Codes as described on [page 85](#).

With this setting, the switch's location is queried for call data each time the destination T-Server receives an inbound call with the ANI or OtherDN attribute.

For T-Server to use NetworkCallID matching in call overflow and manual transfer scenarios, set the ISCC Call Overflow Parameters to (for example):

```
match-callid, inbound-only=false
```

when configuring Switch Access Codes as described on [page 85](#).

With this setting, the switch's location is queried for call data each time the destination T-Server receives a call of any type (including inbound) with the NetworkCallID attribute.

---

## Next Steps

Continue with Chapter 5, “Starting and Stopping T-Server and CSTA Connector,” on [page 97](#) to test your configuration and installation.

